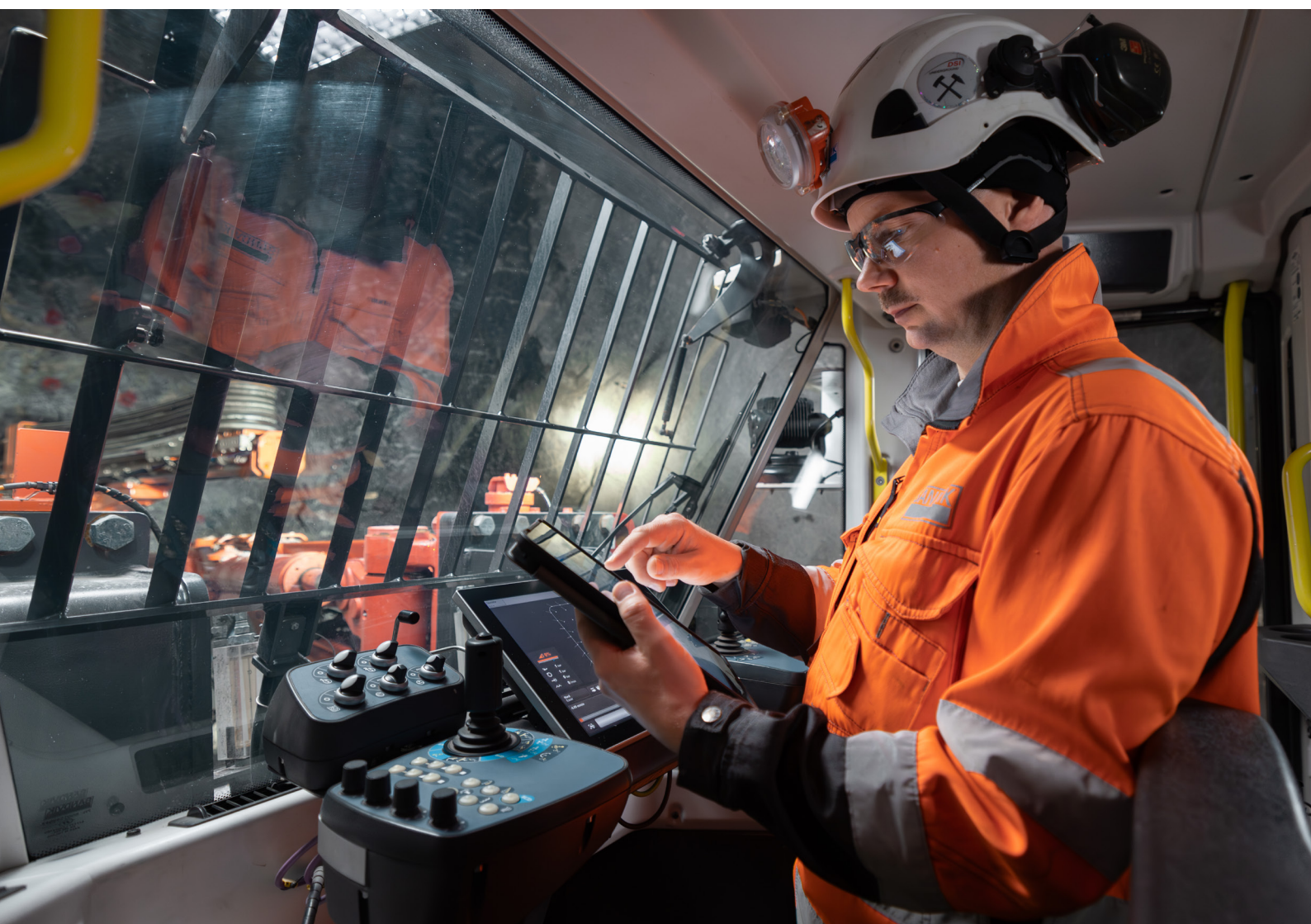


DrillConnect

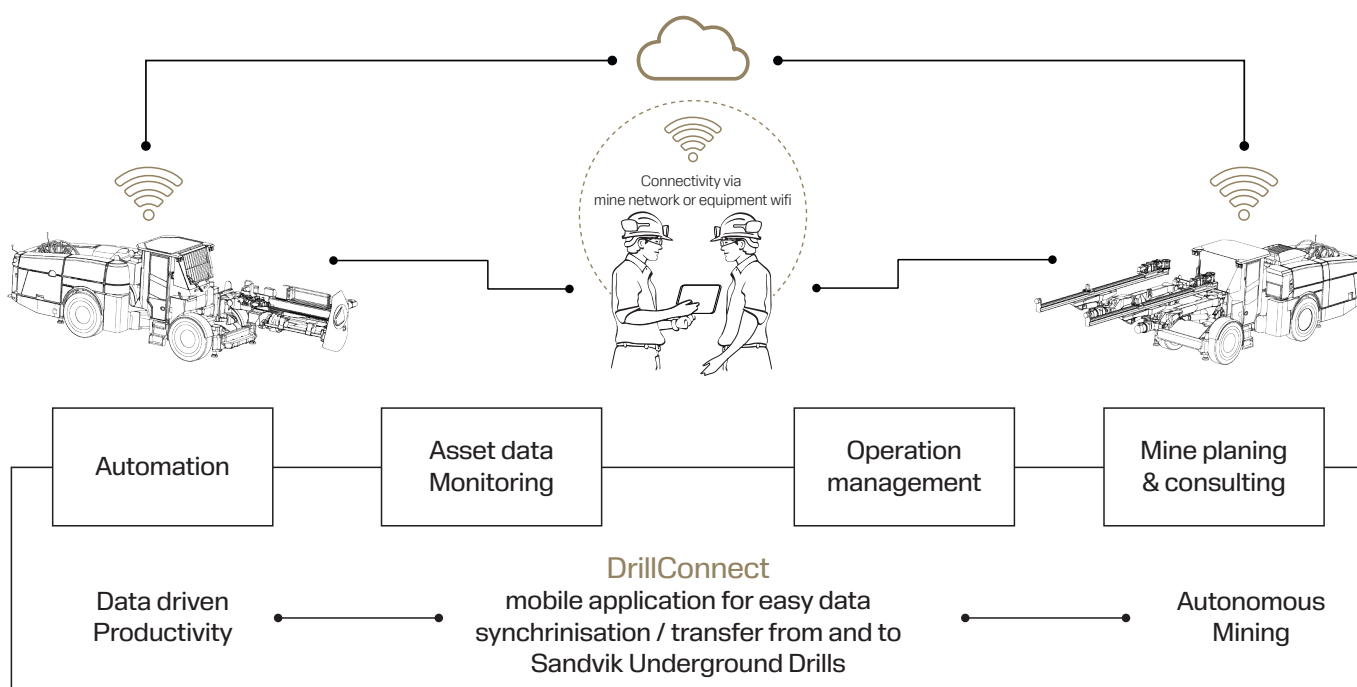
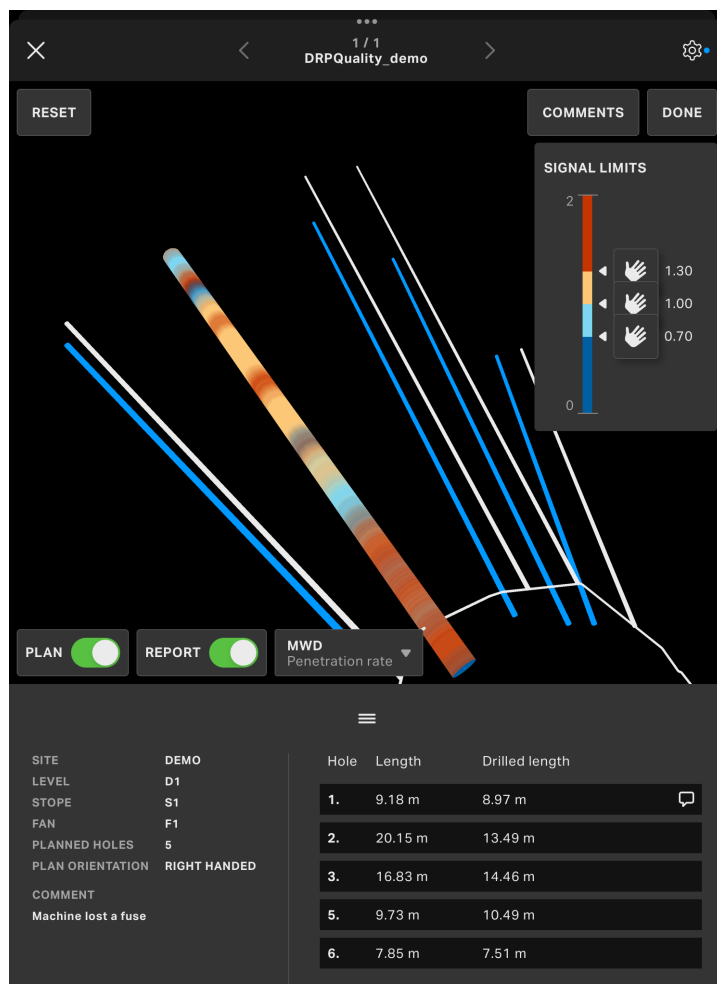
Seamlessly Connecting Your Operations



Mobile Solution

Sandvik DrillConnect is a digital application supporting underground mining and tunneling operations where there is limited or no communication network. It works on mobile phones and tablets ensuring easy automatic up-and-down data transfer. Multiple drills can simultaneously be connected using each drill rig's WiFi.

This paperless, flexible solution helps improving the mine productivity as it enables smooth connectivity to transfer and visualize drill and bolting plans as well as productivity or drill health reports during operations. The data flows are transferred in the background through Sandvik's integrated Knowledge Box™. Information like, Measure While Drilling (MWD), As Drilled or Deviation data can be visualized in real time during drilling; operator's comments per hole or fan are displayed allowing quick reactivity without loss of time.



Improved operational efficiency



Teams working underground, close to the drill can access in real time the continuous data flow transferred in the background, including specific equipment health information, performance reports and diagnostics screens. They can visualize and download online or offline equipment logs, technical documentations without disturbing the operations ensuring proactivity and efficiency.

The application allows the creation of reports to record equipment events. They are automatically filled with drill model, serial number, software version and equipment logs and can be completed with photos or videos before they are sent by email.

Thanks to Sandvik DrillConnect, the data transfer between the application and the rig is seamless and automated, improving data utilization and thus, overall mine productivity.

DrillConnect is compatible with Sandvik DD322i Digital Driller™ for operator continuous learning.

ADVANTAGES:

Sandvik DrillConnect app is easily downloadable - available on both mobile phone and tablet on iOS and android devices

Connection either via equipment WiFi and/or mine network

Paperless solution: eliminates need to print drill plans, reports, equipment documentation

Real-time efficiency: data is updated automatically in the background while operator is operating the machine

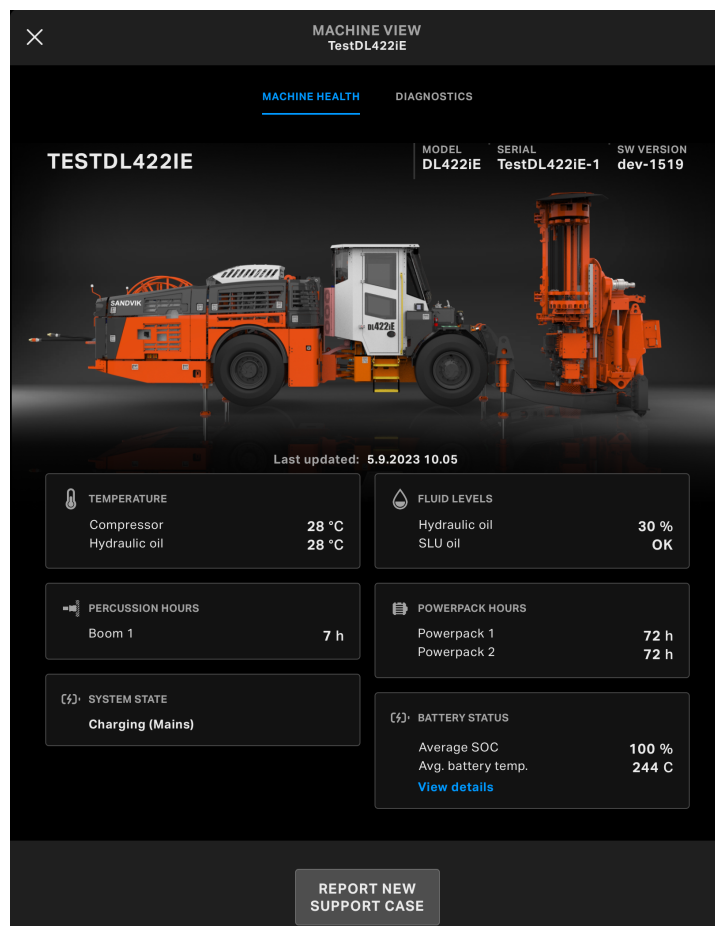
Diagnostics views, equipment health screens including a dedicated BEV data set are available without disturbing the process

Time-saving: quick drill/bolting plan up and down transfer; transfer of My Sandvik data and easy visualization of drill/bolting plans, reports and planned vs drilled data information

Enhanced maintenance: userfriendly report creation including equipment basic datas: drill model, serial number, software version

Downloading and offline accessibility to digital equipment manuals

Authentication control: data flows are managed through integrated knowledge box™



Available on the applications stores.



SANDVIK

B2-1371:03ENG@Sandvik Mining and Rock Solutions 2023 SANDVIK, ISURE® and DIGITAL DRILLER™ are trademarks owned by the Sandvik group of companies.

*Test results and calculations are to be considered as results reached under certain and controlled conditions. These test results and calculations should not be treated as specifications and Sandvik does not guarantee, warrant or represent the outcome of test results or calculations in any or all circumstances.

