



# Commando™ DC130Ri

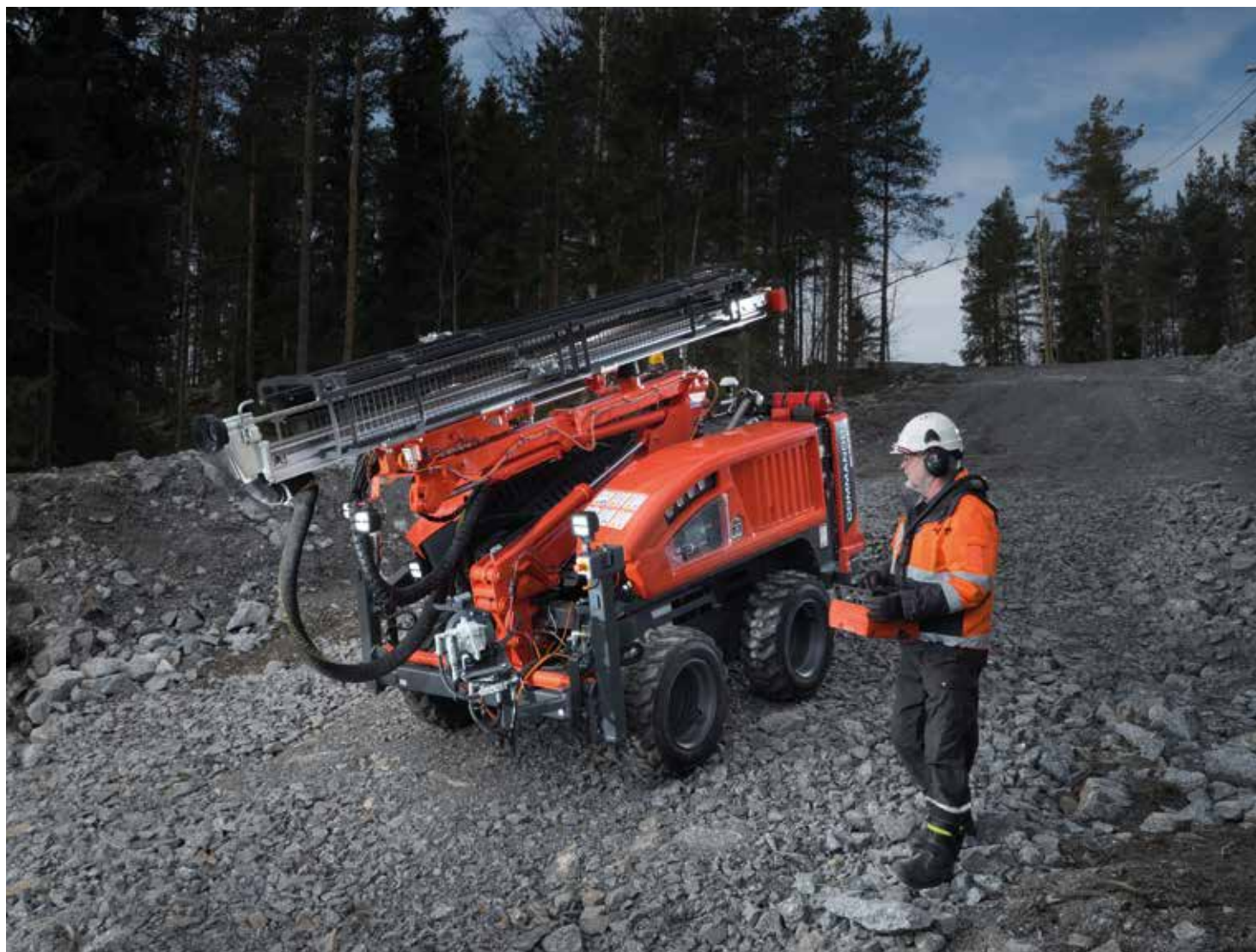
Intelligent versatility  
in a compact package





# Technical specification in brief

Recommended hole diameter	22–45 mm (7/8"–1 3/4")
Rock tools	H19, H22, H25, R23, R25, R28
Hydraulic rock drill and percussion output power	RD106, 5.5 kW (7.4 hp)
Drilling coverage	12 m <sup>2</sup> (129 ft <sup>2</sup> )
Engine type	CAT C2.2 Tier 3 CAT C2.2 Turbo Tier 4F / Stage V
Engine output power	Tier 3 36.3 kW (48.7 hp) / 2 800 rpm Tier 4F / Stage V 45 kW (60.3 hp) / 2 750 rpm
Control system type	Sandvik SICA, PLC controlled proportional electrohydraulics
Flushing air capacity	1.2 m <sup>3</sup> /min (42 cfm), up to 8 bar (116 psi)
Total weight	3 250 kg (7 165 lbs)



# Developed with you improved for you

Since the Commando™ series was born almost 30 years ago, the rigs have continuously evolved through your feedback. The latest evolution, Commando™ DC130Ri, continues that tradition as our first intelligent compact-class drill.

We've made nearly 100 unique improvements to the Commando™ DC130Ri, which revolutionizes small-diameter top hammer drilling once again. Intelligent control features that

until now have been found only on larger surface rigs help you minimize operating costs. A new modular design and practical component layout simplify service.

Mobile and lightweight yet stable and well-balanced, our latest rubber-tired rig is ideal for maneuvering in the tightest spaces and delivers versatility for a range of drilling applications.







## Intelligence is high performance

The intelligent drilling control system with large onboard touchscreen enables effective monitoring of drilling and easy changing of equipment functions. The touchscreen provides different views for adjustment, aligning and drilling, as well as diagnostics to simplify troubleshooting and enable operators to get the job done quicker and more smoothly. The intelligent drilling control system further enhances performance by allowing increased percussion pressure while drilling without sacrificing rock tool life.

### **Safety is strength**

Your safety and ergonomics have always been integral to our design of Commando™ rigs and DC130Ri to further improve your safety, such as the radio remote controller with optional Remote Screen Solution, display lights for the onboard screen and efficient working lights to better illuminate the drilling area.







#### **Versatile ways to drill**

One of the major advantages of contracting drills compared to production drills is their incredible versatility. Commando™ DC130Ri is no exception, with many in-built features that make it easy to adapt to changing job sites and different drilling applications.

#### **Lower operating costs**

In today's construction climate, reducing operating costs is crucial to remaining competitive. Commando™ DC130Ri is powered by a fuel-efficient engine and its intelligent control system also minimizes operating costs.

#### **Transportation made easy**

One of the most important features of contracting drill rigs is transportability. Commando™ DC130Ri can be transported easily with a small truck, lifted into a shaft with a crane or even transported by helicopter to a job site.

#### **No terrain too tough**

In addition to its transportability, Commando™ DC130Ri is also a highly mobile contracting rig capable of climbing the steepest slopes and roughest terrain with ease. Four high-torque tramming motors and skid steering improve mobility.

#### **Hands-on with modularity**

We understand the importance of simple maintenance, and we've taken it to heart in the modular design of Commando™ DC130Ri. The rig can be stripped down to four modules to make repairs and component changes easier than ever.

Want to know more?



or contact your local Sandvik representative.