

SANDVIK

xSERIES

EASY. RELIABLE. PRODUCTIVE.





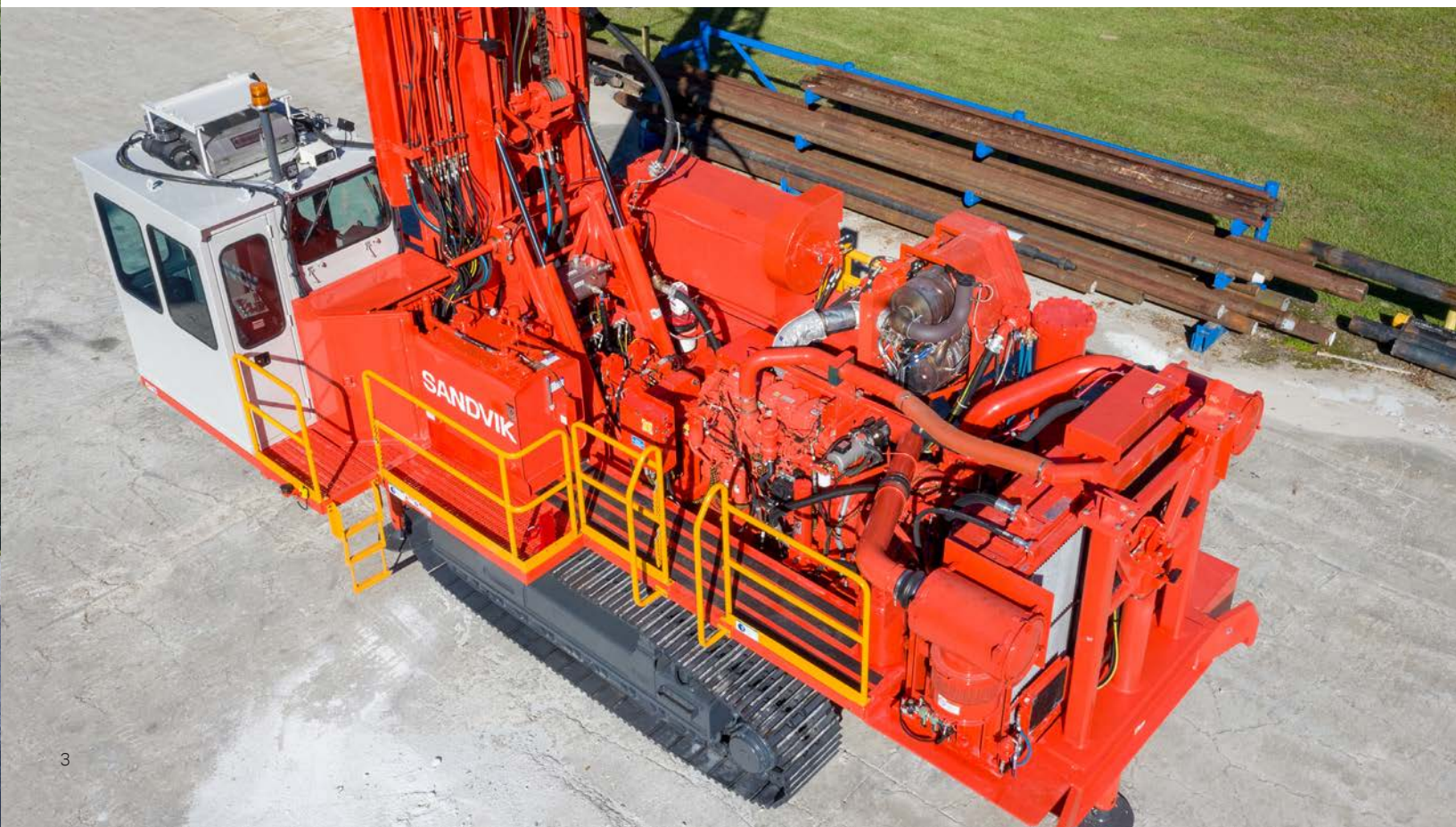
xSERIES

BUILDING ON THE BEST

Our unwavering commitment to quality and dedication to constant improvement is evident today in our xSeries family. Built on the proven design and legendary reliability of our diesel powered rotary blasthole drills, xSeries machines incorporate added intelligence and improved ergonomics, offering operators the perfect combination of reliability and technology.

BETTER FOR OPERATORS. BETTER FOR BUSINESS.

The xSeries cabin features electrohydraulic controls, an enhanced operator's chair, touch screens and digital gauges, resulting in a more ergonomic design. These improvements provide a comfortable operating environment to enhance operator performance. The added intelligence of the touch screens and digital gauges gives the operator feedback on machine performance and monitors machine health.



xSERIES KEY FEATURES

01 Rigid lattice-style masts and heavy duty pulldown chains are part of the package that make Sandvik's xSeries blasthole drills top performers in a class of their own. The angle drilling option is one of the many features that drive this performance in an impressive range of applications. The mast can be set in 5° increments, from 0 to 30°.

02 The effective handling of drill pipe contributes to shorter cycle times and more holes drilled.

03 The reimagined operator's cab features a swivel-enabled seat with integrated electrohydraulic controls which simplifies operation and, coupled with a larger operator's window, offers improved visibility of the operating environment. It's also a safer environment with ISO symbol decals on all cab controls, standard LED exterior lights, safety relay for added protection and dual channel emergency stops. The 7" touch screen GUI interface and PLC controls, provide comfort and ease of use.

04 Sandvik hydraulic systems manage power operation with few moving parts, produce abundant power and work under extreme operating conditions.

05 Moving and set-up are important parts of the drilling cycle. To overcome the rugged terrain in a mining environment, Sandvik drills deliver top performance from strong, structurally sound undercarriages and heavy duty frames.

06 These drills have solid engine and compressor options that provide the right combination for each drilling condition. The engine and compressor range allow for optimized hole flushing and the most power for down-the-hole (DTH) drilling. Operating at lower speeds and load factors ensures longevity. Additional features like load sensing and fan speed controls aid performance.

07 The well-designed, open work deck of the xSeries offers operators quick access to keep operations up and running.

xSeries



THE D75KX

The D75KX combines all the dependability and power of the D75KS but features an intelligently redesigned operator's cab for maximum ergonomic comfort.

Features

- Health monitoring system
- 7" mobile grade rugged touch screen
- Enhanced control system
- Electronic controlled compressor system

The D75KX comes with low pressure air for rotary drilling. Optional high pressure compressors add flexibility to drill with 8" hammers. It is a rugged and time-proven design often found in stripping applications in coal or metals mining.

- 229 to 279 mm (9" to 11") diameter holes
- Maximum hole depth 52.5 m (174'4")
- Pulldown 334 kN (75,000 lbf)



MACHINE SPECIFICATIONS D75KX

	METRIC	IMPERIAL
Hole diameter	229-279 mm	9"-11"
Maximum hole depth	52.5 m	174' 4"
First pass hole depth	10.2 m	33'
FEED		
Maximum pulldown	334 kN	75,000 lbs
Weight on bit	409 kN	92,000 lbs
Hoist rate	0-27 m/min	0-89 fpm
ROTARY HEAD (2 SPEED)		
0-94 rpm	13,167 Nm	9,710 ft-lbs
0-145 rpm	8,623 Nm	6,360 ft-lbs
POWERGROUP		
Tier 4 / Non Tier 4		
Caterpillar C-27	662 kW (875HP) @1800rpm	
Compressor Low Pressure	56.6 m3/min @ 6.9 bar	2000 cfm @ 100psi
Compressor High Pressure	41.0 m3/min @ 24.1 bar	1450 cfm @ 350 psi

THE D245X

The D245X combines all the dependability and power of the D245S but features an intelligently redesigned operator's cab for maximum ergonomic comfort.

Features

- Health monitoring system
- 7" mobile grade rugged touch screen
- Enhanced control system
- Electronic controlled compressor system

The D245X comes standard as a rotary drill, with a low pressure compressor and stronger hydraulics for pulldown. Its most popular application is coal mining. With optional high pressure air, the D245X is a versatile combination machine to rotary drill in overburden and hammer drill in aggregate or ore.

- 127 to 203 mm (5" to 8") diameter holes
- Maximum hole depth to 45 m (148')
- Pulldown 184 kN (41,500 lbf)



MACHINE SPECIFICATIONS D245X

	METRIC	IMPERIAL
Hole diameter	127-203 mm	5" - 8"
Maximum hole depth	27 m	88' 10"
First pass hole depth	8.8 m	28' 10"
FEED		
Maximum pulldown	184 kN	41,500 lbs
Weight on bit	209 kN	47,000 lbf
Hoist rate	0-35.7 m/min	0-117 fpm
ROTARY HEAD (2 SPEED)		
0-114 rpm	8,287 Nm	6,110 ft-lbs
0-175 rpm	5,383 Nm	3,970 ft-lbs
POWERGROUP		
Tier 4		
Caterpillar C-15	407 kW (540HP) @1800rpm	
Compressor	29.7 m3/min @ 6.8 bar	1050 cfm @ 100 psi
Non-Tier 4		
Caterpillar C-15	354 kW (475HP) @1800rpm	
Compressor	29.7 m3/min @ 6.8 bar	1050 cfm @ 100 psi

THE D25KX

The D25KX is equipped as a down the hole (DTH) hammer drill, including a high pressure air compressor. It is commonly used in large quarries and in gold and other metals mines and is the drill of choice among contractors.

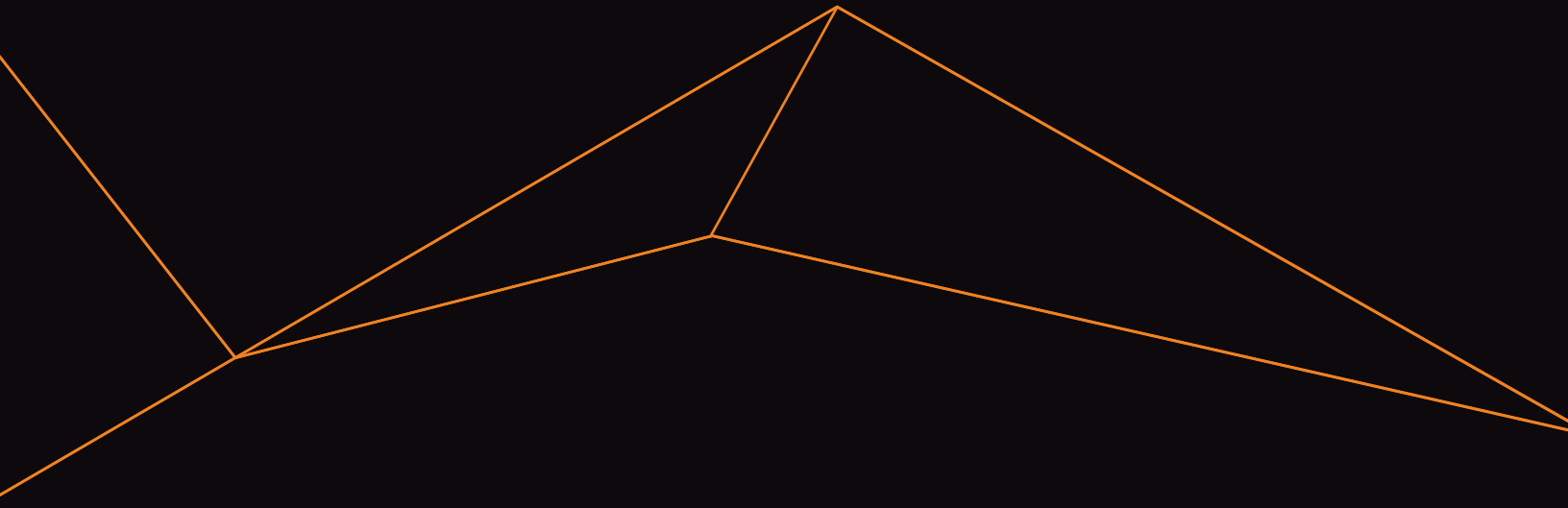
Features

- 127 to 203 mm (5" to 8") diameter holes
- Maximum hole depth of 45 m (148')
- Pulldown 184 kN (41,500 lbf)



MACHINE SPECIFICATIONS D25KX

	METRIC	IMPERIAL
Hole diameter	127-203 mm	5" - 8"
Maximum hole depth	27 m	88' 10"
First pass hole depth	8.8 m	28' 10"
FEED		
Maximum pulldown	184 kN	41,500 lbs
Weight on bit	209 kN	47,000 lbf
Hoist rate	0-35.7 m/min	0-117 fpm
ROTARY HEAD (2 SPEED)		
0-114 rpm	8,287 Nm	6,110 ft-lbs
0-175 rpm	5,383 Nm	3,970 ft-lbs
POWERGROUP		
Tier 4		
Caterpillar C-15	407 kW (540HP) @1800rpm	
Compressor	28.3 m ³ /min @ 24.1 bar	1000 cfm @ 350 psi
Non-Tier 4		
Caterpillar C-18	470 kW (630HP) @1800rpm	
Compressor	32.8 m ³ /min @ 24.1 bar	1160 cfm @ 350 psi



##-###ENG © SANDVIK AB 2020. SANDVIK IS A TRADEMARK OWNED BY THE SANDVIK GROUP OF COMPANIES.

