



CONTRACT MANUFACTURING SANDVIK IN ZELTWEG

MECHANICAL CUTTING DIVISION



SAFETY FIRST

Sandvik's objective is zero harm to our people, the environment we work in, our customers and our suppliers.



PROTECTIVE
EQUIPMENT



FIRST AID
KIT



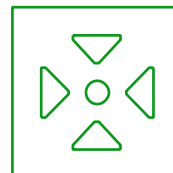
ALARM



EMERGENCY
NUMBER



EMERGENCY
EXIT



ASSEMBLY
POINT



HEALTH &
WELLBEING



PSYCHOLOGICAL
SAFETY



WE SET THE INDUSTRY STANDARD

Contract manufacturing is one of Sandvik's core areas at the Zeltweg site. With a history of more than 170 years, the competence center for engineering and production of machines for mechanical rock cutting is located here.

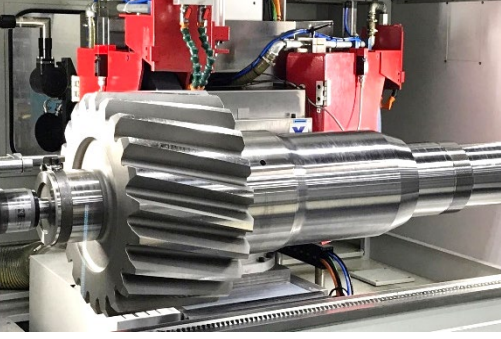
Within the scope of contract manufacturing, we offer our customers state-of-the-art technologies in the areas of turning, milling, gear cutting, heat treatment, grinding, welding, assembly, repairs and services, complemented by the dedication and know-how of our highly qualified employees.



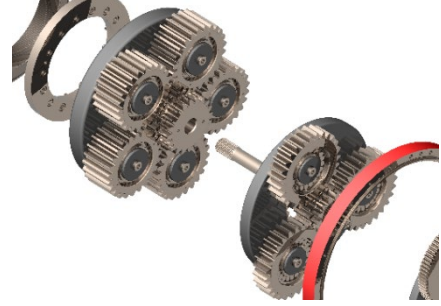
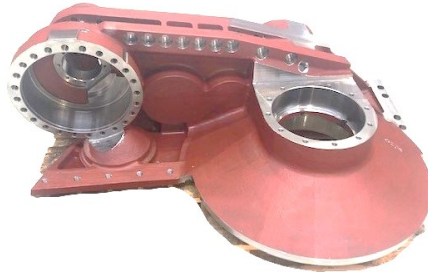
SANDVIK MINING AND CONSTRUCTION G.M.B.H. in Zeltweg develops and manufactures tunnelling and mining machines for the cutting of mineral and ore deposits and for tunneling excavation worldwide.

Typical products from the very extensive portfolio include Bolter Miner, Roadheader, Continuous Miner, Borer Miner, etc.

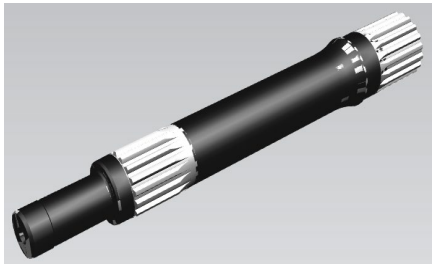




CONTRACT MANUFACTURING IN PERFECTION



CERTIFICATIONS
ISO 9001
ISO 14001
ISO 45001
ISO 3834-2
ATEX / IECEx, etc.



YOUR STRONG PARTNER IN CONTRACT MANUFACTURING

**INTEGRATED
PROCESS CHAIN**



**WE SET
THE
INDUSTRIE
STANDARD**

**5-AXIS TECHNOLOGY
FOR
COMPLETE PROCESSING**

**FROM RAW MATERIAL
TO
HIGH-END PRODUCT**

**QUALITY
FOR
CUSTOMER VALUE**



PORTFOLIO OF COMPETENCIES

STATE-OF-THE-ART MACHINING TECHNOLOGIES

TURNING

- 5-axis multi-tasking machine
- Horizontal turning lathe
- Hard turning
- Surface finishing by rolling
- ...

MILLING

- 5-axis gear milling
- Boring and milling machining
- 5-axis simultaneous machining
- Machining center
- ...

GEAR CUTTING

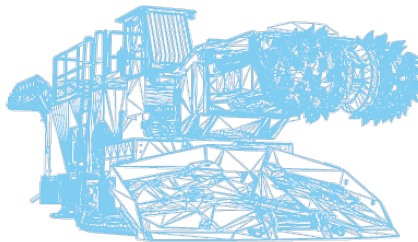
- Gear hobbing/shaping
- Gear grinding
- 5-axis gear milling
 - Spur gears/hollow wheels
 - Spiral bevel gears
 - Face gears
- ...

GRINDING

- External and internal cylindrical grinding
- Gear grinding
- Face grinding
- Cone grinding
- ...

HEAT TREATMENT

- Case hardening
- Double case hardening
- Quenching and tempering
- Nitriding
- Enealing/tempering
- Flame hardening
- ...



WELDING

- Build up welding
- Pendulum welding
- Welding repairs
- ...

ASSEMBLY

- Complete machines
- Group assembly
- E-components
- Gear boxes
- Cylinders
- Hydr.-Components
- ...

SERVICES

- Expertise
- Consulting
- Reverse engineering
- Machining
- Assembly/repairs
- ...

QUALITY

- Certified acc. to ISO 9001
- Metallographic labor
- 3-coordinates measuring machine
- Gear measuring
- Check of bearing pattern and meshing
- Gear box test panel
- ...

REPAIRS

- Overhauls
- Repair welding
- Gear boxes
- Gears
- ...

MACHINING CAPABILITIES

FROM RAW MATERIAL TO HIGH-END PRODUCT

| | Diameter [mm] | Max. Length [mm] | Face Plate max. Ø [mm] |
|---|---|----------------------------------|-----------------------------------|
| TURNING | 10 - 3.840 | 3.500 | 2.500 |
| GRINDING | 10 - 1.200 | 2.100 | |
| HARDENING Quenching, Tempering, Annealing, Nitriding | 10 - 1.200 | 1.500 | |
| Flame Hardening | 280 - 1.500 | | |
| Shot peening | 1.400 | | |
| | Diameter [mm] | Max. Tooth width [mm] | Modul |
| GEARS | 0 - 1.250 | 1.000 | 0,5 - 28 |
| BEVEL GEARS | 50 - 1.090 | | 5 - 40 |
| | Max. Dimensions (LxBxH) [mm] | Max. load [kg] | |
| MILLING | 14.500 x 5.000 x 2.000 | 100.000 | |
| | Diameter [mm] | Max. Length [mm] | |
| WELDING | | | |
| Welding Lathe | 800 | 2.500 | |
| Welding checks | MP / PT / VT | | |
| Welding round table | | Max. 15t load | |

Values given in the table correspond to the minimum and maximum dimensions covered by modern machining equipment with a wide range of automated processing options and innovative manufacturing know-how.





**CONTACT CONTRACT MANUFACTURING
ELMAR STEINWIDDER**

Manager Production & Process Engineering
Tel: +43 3577 755-521 / Mobile: +43 664 965 6224
elmar.steinwider@sandvik.com

SANDVIK MINING AND CONSTRUCTION G.M.B.H.

Alpinestraße 1, 8740 Zeltweg, Austria
Tel: +43 3577 755-0
office.zeltweg@sandvik.com

www.rocktechnology.sandvik/de/produkte/mechanische-schneidmaschinen/lohnfertigung/

