

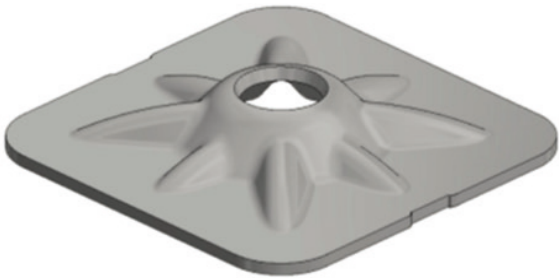
Octo Plate

Product code: OCP

Category: Accessories / Plates and washers

Key features

- The Octo Plate has long buttress arms to direct load to the plate's edge.
- Large 200x200mm square bearing surface for enhanced support.
- The 5mm plate features a Ø41 mm hole for expansion shells (compatible with DS2 Bolt).
- 5 mm plate offers a minimum compression load of 215kN (lab tested).
- 6 mm plate offers a minimum compression load of 300kN (lab tested), with performance varying in service conditions.

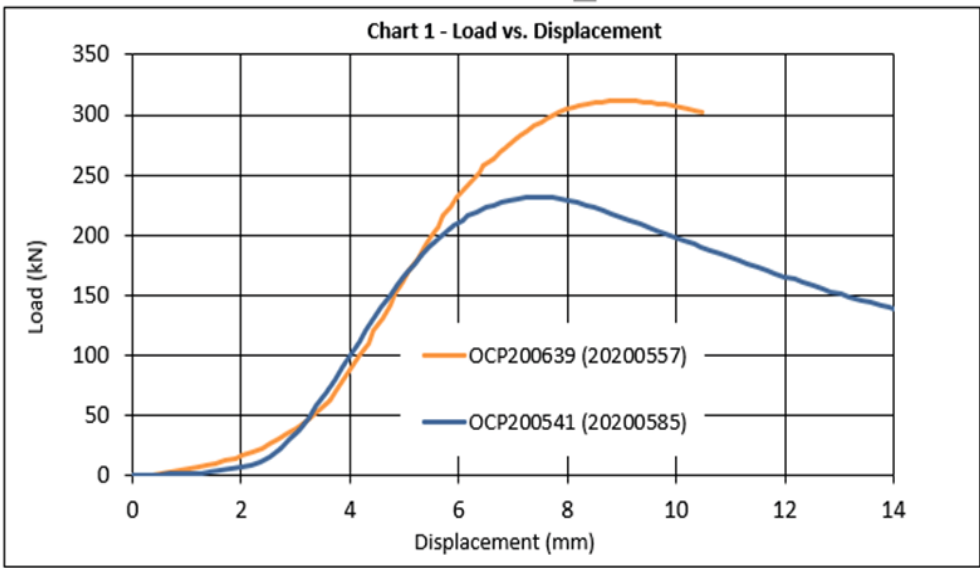


Product code guide

Plate type	Size	Thickness	Hole diameter	Size	Weight	Packaging
OCP200541	200	5 mm	41	200 mm x 200 mm	1.5 kg	T050
OCP200639	200	6 mm	39	200 mm x 200 mm	1.8 kg	T050

Load testing


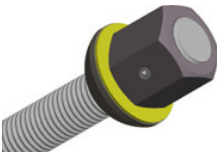
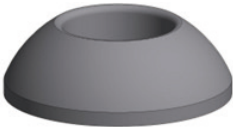
Load tested in compression over 70mm hole with 20mm self-aligning ball washer.



- Notes**
- DSI Underground is Quality Assured to ISO 9001:2015
 - Only DSI Underground / Sandvik rock bolt components should be used to enable the optimum performance of the bolt system to be obtained

Product accessoires examples

We manufacture a comprehensive range of products specifically designed for this plates.

Products			
Product group	AT Bolt	M24 Rock bolt	Dome ball washer
Product imagery			

Mobile App

Discover more! Explore our full product range, knowledge center, and additional details through the "Ground Support" App—available now on iOS and Android.



iOS



Android

Legal disclaimer

All dimensions, weights, quantities, and specifications are those applicable at the time of this publication and may be amended from time to time. Please contact your local representative for final confirmation of any key specifications.