

Expansion shells

Product specification: Refer to table below
Category: Solid bolts / accessories

Introduction

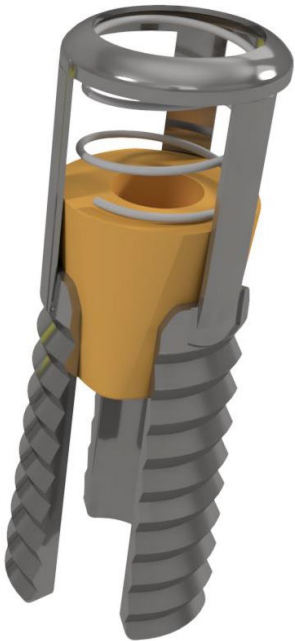
Mechanical Expansion Shells are versatile anchoring components designed to provide immediate support for roof bolts and cable bolts in mining and excavation environments. They are ideal for situations where grout or resin installations are challenging or impractical, with the added flexibility of post-grouting capabilities.

Key features

- Leaf locking system for effective pre-tensioning of the chosen support system.
- Available in various diameters, customizable to fit different bolt sizes
- Spring -loaded systems for added functionality and adaptability
- Thread customization with a wide range of internal thread sizes and types available upon request

Main advantages

- Versatility , suitable for a wide range of applications and bolt types
- Ease of installation, provides immediate anchoring, reducing setup time
- Adaptability, spring-loaded and customizable options ensure a fit for diverse site requirement
- Post-grouting compatibility, enables further reinforcement with grout after installation



Expansion shell specifications

Expansion shell type	Minimum hole size	Maximum hole size	Maximum thread size
ESB32	32.5 mm	38 mm	Rd 20 mm
ESB35	35.5 mm	41 mm	Rd 22 mm
ESB38	38.5 mm	44 mm	Rd 24 mm
ESB43	43.5 mm	49 mm	Rd 26 mm

Specifications	Diameters: Available in multiple sizes to meet specific project needs. Thread Options: Customizable internal threads for compatibility with various bolts.
Installation/applications	Mining roof and cable bolt anchoring. Excavations requiring immediate stabilization. Areas where resin and grout application is difficult or delayed.
Packaging	Minimum order quantities may apply.
Legal disclaimer	All dimensions, weights, quantities, and specifications are those applicable at the time of this publication and may be amended from time to time. Please contact your local representative for final confirmation of any key specifications.