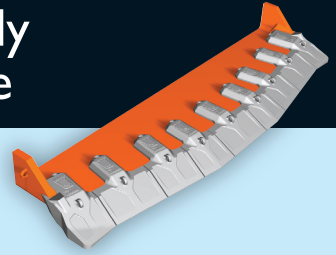


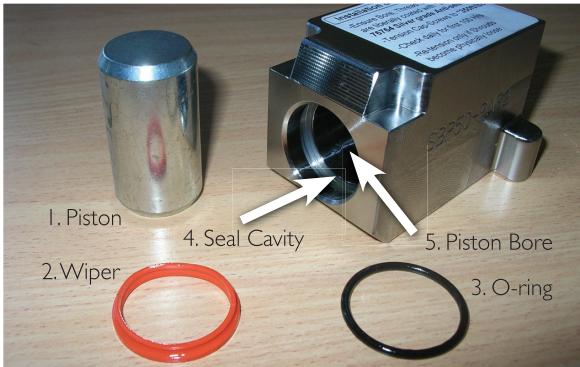
Blue Pointer Series 2 Pin Assembly Service Kit Installation Procedure

Tools and Equipment Required

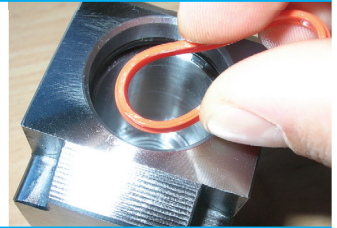
- A Blue Pointer Series 2 Service Kit
- A thin blunt edge (e.g. 6 inch Steel Rule or Small Screwdriver)
- A small amount of oil based solvent and clean oil



1 The Blue Pointer Series 2 Service Kit consists of components 1–3, labelled below. This procedure outlines the removal of used, and installation of new service kit components.



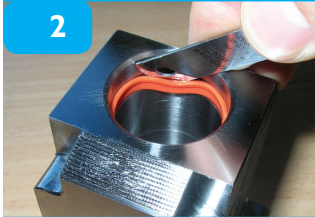
5 Squeeze the wiper together as shown, and insert it into the Seal Cavity below the O-ring.



6 Holding the Wiper in place in the Seal Cavity, push the Wiper into the Piston Bore. The Wiper should now be sitting partially in the Seal Cavity and partially in the Piston Bore.



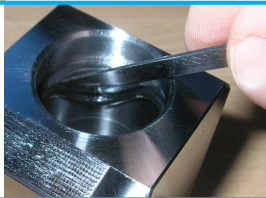
2 Remove the used Piston. Then using the thin blunt edge, pry out the used Wiper.



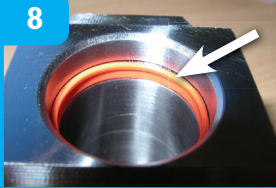
7 Using your finger, slip the Wiper into place under the O-ring.



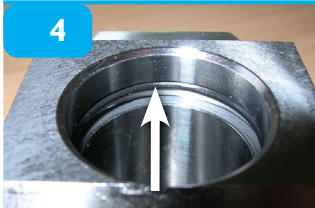
3 Again using the thin blunt edge remove the used O-ring. Clean seal cavity & Piston Bore using oil based solvent.



8 Check that the Wiper is seated below the O-ring and within the seal cavity.



4 Lightly coat new O-ring in oil and insert O-ring into the Seal Cavity, sliding it to the top of the cavity



9 Liberally coat the Piston Bore with "Loctite 76764 Silver grade Anti-seize", and insert the piston into the bore.

