

Blue Pointer 2

Alternative Removal Procedure



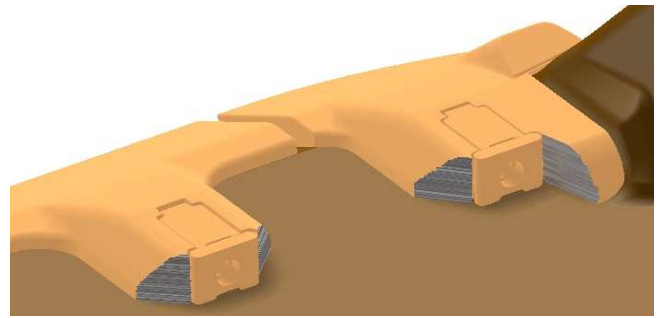
Method 1: Re-wash the shroud, concentrating on the area around the lock and in the cavity where the cap screw has been removed from. Ensuring all personnel are at a safe distance

Repeat steps in standard removal procedure once the shrouds have been re-washed. Perform the steps while the shrouds are still wet, to reduce friction. If necessary use a copper hammer or equivalent, to create vibrations in the shroud to aid loosening of the locking mechanism and shroud.

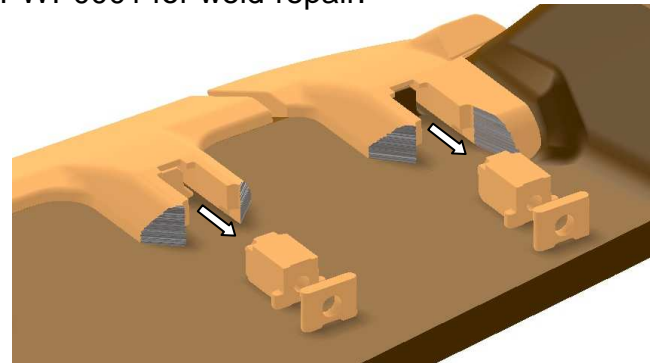


Method 2: Should method 1 fail, drive machine to a level and flat location, a safe distance away from any personnel. Use machine hydraulics to bounce the front of the bucket on the ground to create vibrations using the weight and energy of the bucket. Do not perform loading with the bucket if shrouds has been taken off as it will damage the lip.

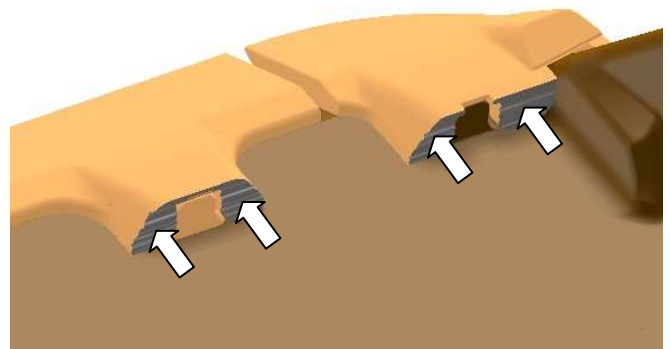
Repeat steps in standard removal procedure once the shrouds have been re-washed. Perform the steps while the shrouds are still wet, to reduce friction. If necessary use a copper hammer or equivalent, to create vibrations in the shroud to aid loosening of the locking mechanism and shroud.



Method 3: If none of the above mentioned procedures loosen the shrouds it will be necessary to cut the shrouds off the lip. Cut into the side of the shroud to protect the lip from damage. Cut at the thinnest section of the shroud to loosen the rear spacer. If lip is damaged during this process, see procedure PWP0001 for weld-repair.



Remove locking mechanism. Wash the locking cavity free from fines. The shroud should now be able to be removed from the lip.



If shrouds are still not able to be removed from lip, cut the top leg off the shroud ensuring not to damage the boss on the lip. The shroud can now be removed from the lip.

! Before performing maintenance work all personnel should ensure they are wearing approved personal protective equipment such as hard hat, safety shoes, safety glasses and work gloves. Under NO circumstances should hardened hammers be used on Blue Pointer® 2 Shrouds. If required, a copper hammer or equivalent should be used. !