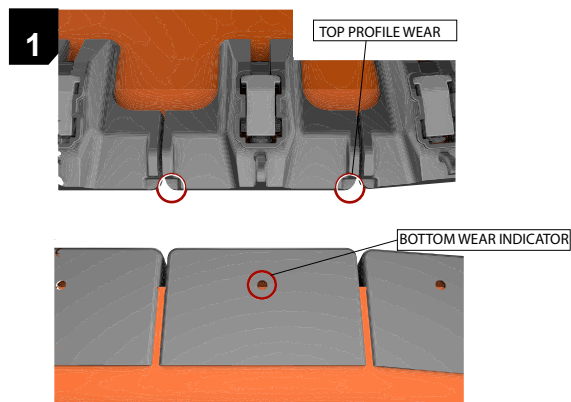


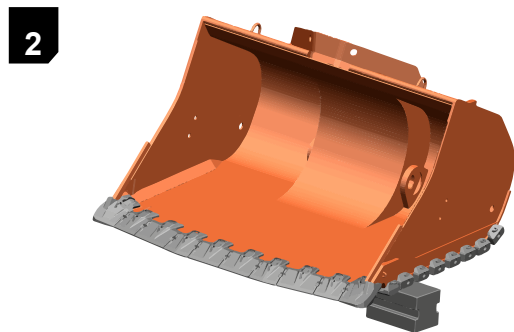
# MAKO™ 50 mm SHROUDS REMOVAL

SHARK™ GROUND ENGAGING TOOLS

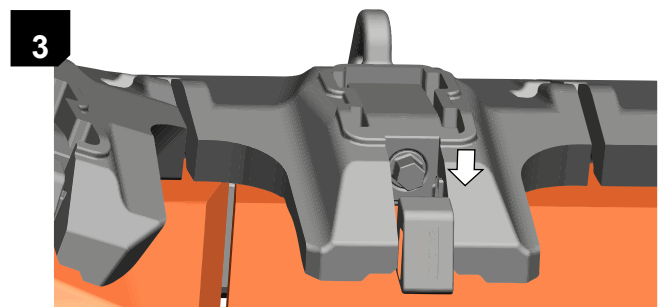
## 1.0. REMOVAL



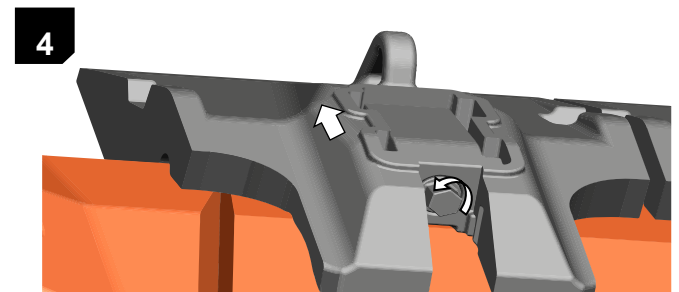
In 50mm MAKO™ Shrouds are ready to be changed when wear indicator become visible or reached in one or both of the (top and Bottom).



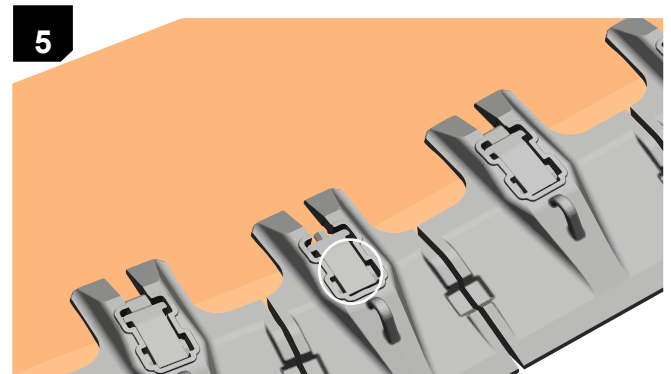
Position the bucket using a bucket holding device or bucket stands. Ensure bucket is empty and clean. Pressure wash the shrouds thoroughly, especially at the Pin Assembly and Bolt Plug cavity area to clear all debris. Ensure all nearby personals are at a safe distance during pressure-wash and all necessary PPE is used. Follow Sandvik recommended Safe Work Procedure SWP0008 during shroud removal process.



Remove the Bolt Plug from the rear of the Hexagonal Bolt head. Be aware to wear appropriate hand protection.



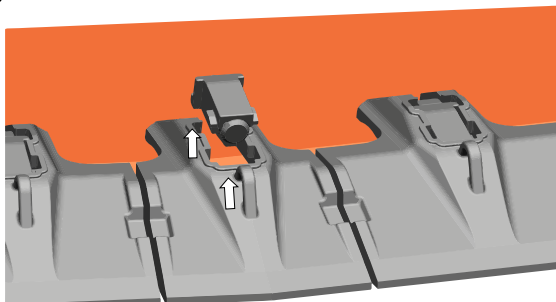
Rotate the Hexagonal Bolt head Anticlockwise direction (Using a Torque Wrench 19mm socket) to push the Pin Assembly in 15mm from the lip.



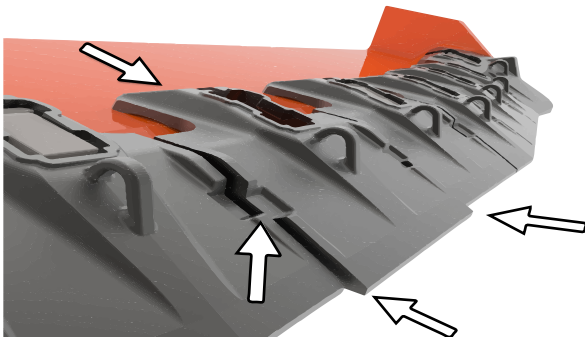
Tighten the bolt three (3) turns in Clockwise direction to release lock tabs from cavity. Ensure locking system is forward enough to release locking tabs.

# MAKO™ 50 mm SHROUDS REMOVAL

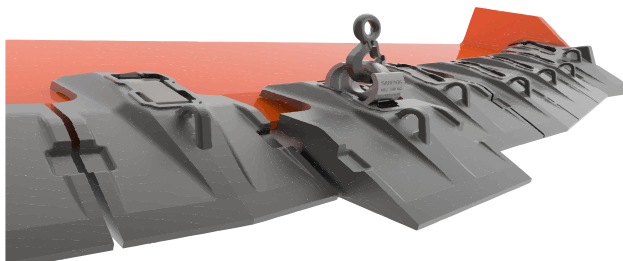
SHARK™ GROUND ENGAGING TOOLS

**6**

Remove the locking system.

**7**

Ensure shroud is loose fit.

**8**

Slide the shroud off lip while fully supported by the MAKO™ shroud lifting device.

Repeat this task with the remained shrouds. Wash down the Lip using a power washer, ensuring the lip profile is clean and ready for installation of the replacement shrouds may be used.

Ensure to wear appropriate workshop and mine site specific Personal Protective Equipment at all times when working with the MAKO™ products.

Under NO circumstances should hardened hammers be used on MAKO™ Shrouds.

If required, a well-dressed Copper Hammer may be used.

