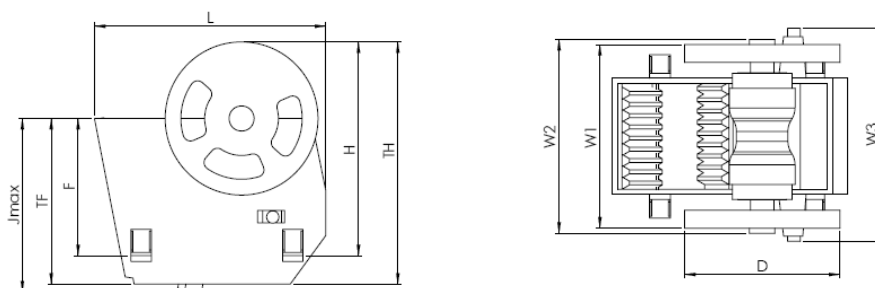
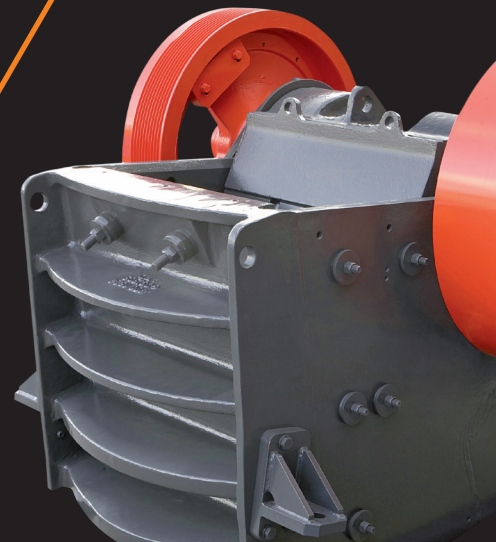


JAW CRUSHER CJ SERIES

CJ411



DIMENSIONS (mm)

Jmax,	TF	F	L	H	TH	W1	W2	W3	D
2 032	1 882	N.A.	2 986	N.A.	2 815	1 965	2 093	N.A.	1 865

WEIGHTS (kg)

Flywheel	Toggle Plate	Toggle Seat	Swing Jaw Complete	Frame Complete	Total Weight (approx.)
1 800	260	40	6 200	14 400	20 600

PERFORMANCE

Feed Opening (mm)	1 045 x 840									
Max feed size (mm)*	750									
Max motor power (kW)	110									
CSS (mm)		50	75	100	125	150	175	200	225	250
Nominal Cap MTPH		-	150-200	200-265	245-325	295-390	340-445	385-505	430-565	-
Standard Jaw Plates	Wide Teeth (WT)/Corrugated (C)/Coarse Corrugated (CC)									

* Apply for regularly shaped material. Occasional larger lumps can be accepted, but if material is irregularly shaped, difficulties may be also experienced with smaller lumps.

The left figures refer to fines removed from feed and the right refers to fines included in the feed.