



HAMMERS THAT DRIVE PRODUCTIVITY

Sandvik hammers combine high power and speed with low fuel consumption. They are tried and tested in demanding applications the world over.

RH460

The new RH460 hammer has been developed with a focus on improving reliability and economy through cutting air consumption, increasing power and improving lubrication. It gives higher impact energy with lower levels of air consumption, giving high productivity in variable ground conditions.

RH550

The RH550 is the first choice for drilling hard and abrasive rocks and is designed for operating pressures from 10-24 bar. It features a patented shank design for optimized energy efficiency, and no foot valve. Models are available with heavy-duty or reversible casings to ensure maximal life in high-speed drilling applications in abrasive rock formations.

RH350

The RH350 is a lean and dependable hammer based on a well-proven design. This hammer works with various industry-standard shank designs. The RH350 is suitable when drilling holes with a diameter of 244 mm up to 900 mm.

RH550 COMPLETE HAMMERS	21
------------------------	----

RH550 REPLACEMENT PARTS	25
-------------------------	----

RH460 COMPLETE HAMMERS	37
------------------------	----

RH460 REPLACEMENT PARTS	41
-------------------------	----

RH350 COMPLETE HAMMERS	51
------------------------	----

RH350 REPLACEMENT PARTS	53
-------------------------	----

RH550r 3"



Replacement parts	Item description	Part No.
Complete hammer		
	2 3/8" API reg. pin top sub	32-5530-RMA/16S
	#21 Cubex. pin top sub	32-5530-RMA/63S

Bit shank	
M30	

Weight		Outside diameter		Hammer length		Hammer length with bit					
kg	lb	mm	inch	mm	inch	Bit closed		Bit extended			
						mm	inch	mm	inch		
25	55	81.3	3.2	823	32.4	875	34.4	911	35.9		
Air consumption, cfm				Air consumption, m³/min							
150 psi		250 psi		350 psi		10 bar		18 bar		24 bar	
172		304		436		4.87		8.61		12.34	

RH550g 5"



Replacement parts	Item description	Part No.
Complete Hammer		
	3 1/2" API reg. pin top sub	32-5555-GMA/04C
	#24 Cubex. pin top sub	32-5555-GMA/77C

Bit shank	
M50	

Weight		Outside diameter		Hammer length		Hammer length with bit					
kg	lb	mm	inch	mm	inch	Bit closed		Bit extended			
						mm	inch	mm	inch		
73	160	126	4.96	987	38.86	1082	42.6	1122	44.2		
Air consumption, cfm				Air consumption, m³/min							
150 psi		250 psi		350 psi		10 bar		18 bar		24 bar	
305		580		855		8.64		16.42		24.21	
Low Volume Option		285		540		790		8.07		15.25	

RH550r 4"



Replacement parts	Item description	Part No.
Complete Hammer		
	2 3/8" API reg. pin top sub	32-5540-RMA/16S
	2 7/8" API reg. pin top sub	32-5540-RMA/11S
	#24 Cubex. pin top sub	32-5540-RMA/77S


Bit shank	
M40	

Weight		Outside diameter		Hammer length		Hammer length with bit					
kg	lb	mm	inch	mm	inch	Bit closed		Bit extended			
						mm	inch	mm	inch		
38	83	98	3.56	914	36	989	38.9	1029	40.5		
Air consumption, cfm				Air consumption, m³/min							
150 psi		250 psi		350 psi		10 bar		18 bar		24 bar	
180		370		560		5.1		10.5		15.9	
Low Volume Option		151		315		466		4.3		8.9	

RH550r 5"



Replacement parts	Item description	Part No.
Complete Hammer		
	3 1/2" API reg. pin top sub	32-5555-RMA/04C
	2 7/8" API reg. pin top sub	32-5555-RMA/11C
	#24 Cubex. pin top sub	32-5555-RMA/77C

Bit shank	
M50	

Weight		Outside diameter		Hammer length		Hammer length with bit					
kg	lb	mm	inch	mm	inch	Bit closed		Bit extended			
						mm	inch	mm	inch		
73	160	126	4.96	987	38.86	1082	42.6	1122	44.2		
Air consumption, cfm				Air consumption, m³/min							
150 psi		250 psi		350 psi		10 bar		18 bar		24 bar	
305		580		855		8.64		16.42		24.21	
Low Volume Option		285		540		790		8.07		15.25	

RH550 5"



Replacement parts	Item description	Part No.
Complete Hammer		
	3 1/2" API reg. pin top sub	32-5550-SMA/04S
	2 7/8" API reg. pin top sub	32-5550-SMA/11S

Bit shank	
M50	

Weight		Outside diameter		Hammer length		Hammer length with bit					
kg	lb	mm	inch	mm	inch	Bit closed		Bit extended			
						mm	inch	mm	inch		
68	145	120	4.72	987	38.86	1082	42.6	1122	44.2		
Air consumption, cfm				Air consumption, m³/min							
150 psi		250 psi		350 psi		10 bar		18 bar		24 bar	
305		580		855		8.64		16.42		24.21	
Low Volume Option		285		540		790		8.07		15.25	

RH550 6"



Replacement parts	Item description	Part No.
Complete hammer		
	3 1/2" API reg. pin top sub	32-5560-SMA/04S

Bit shank	
M60	

Weight		Outside diameter		Hammer length		Hammer length with bit					
kg	lb	mm	inch	mm	inch	Bit closed		Bit extended			
						mm	inch	mm	inch		
72	158	142	5.6	922	36.3	1008	39.7	1046	41.2		
Air consumption, cfm				Air consumption, m³/min							
150 psi		250 psi		350 psi		10 bar		18 bar		24 bar	
343		659		972		9.8		18.7		27.5	

RH550g 6"



Replacement parts	Item description	Part No.
Complete hammer		
	3 1/2" API reg. pin top sub	32-5565-GMA/04C
	#28 Cubex. pin top sub	32-5565-GMA/56C
Bit shank		
	M60	

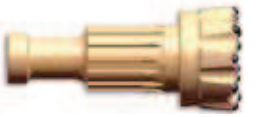


Weight		Outside diameter		Hammer length		Hammer length with bit					
kg	lb	mm	inch	mm	inch	Bit closed		Bit extended			
						mm	inch	mm	inch		
82	180	150	5.9	922	36.3	1008	39.7	1046	41.2		
Air consumption, cfm				Air consumption, m³/min							
150 psi		250 psi		350 psi		10 bar		18 bar		24 bar	
343		659		972		9.8		18.7		27.5	

RH550r 8"



Replacement parts	Item description	Part No.
Complete Hammer		
	4 1/2" API reg. pin top sub	32-5585-RMA/19C
Bit shank		
	M80	



Weight		Outside diameter		Hammer length		Hammer length with bit					
kg	lb	mm	inch	mm	inch	Bit closed		Bit extended			
						mm	inch	mm	inch		
173	380	181	7.12	1219	48	1310	51.6	1354	53.3		
Air consumption, cfm				Air consumption, m³/min							
150 psi		250 psi		350 psi		10 bar		18 bar		24 bar	
460		850		1240		13		23.8		35.1	
Low Volume Option		300		560		830		08.05		15.9	
										23.5	

RH550r 6"



Replacement parts	Item description	Part No.
Complete hammer		
	3 1/2" API reg. pin top sub	32-5565-RMA/04C
	#28 Cubex. pin top sub	32-5565-RMA/56C
	3 1/2" BECO. pin top sub	32-5565-RMA/55C
Bit shank		
	M60	



Weight		Outside diameter		Hammer length		Hammer length with bit					
kg	lb	mm	inch	mm	inch	Bit closed		Bit extended			
						mm	inch	mm	inch		
82	180	150	5.9	922	36.3	1008	39.7	1046	41.2		
Air consumption, cfm				Air consumption, m³/min							
150 psi		250 psi		350 psi		10 bar		18 bar		24 bar	
343		659		972		9.8		18.7		27.5	

RH550w 8"



Replacement parts	Item description	Part No.
Complete Hammer		
	4 1/2" API reg. pin top sub	32-5585-WMA/19S
Bit shank		
	M80	



Weight		Outside diameter		Hammer length		Hammer length with bit					
kg	lb	mm	inch	mm	inch	Bit closed		Bit extended			
						mm	inch	mm	inch		
173	380	181	7.12	1270	50	1361	53.6	1405	55.3		
Air consumption, cfm				Air consumption, m³/min							
150 psi		250 psi		350 psi		10 bar		18 bar		24 bar	
525		975		1540		14.9		27.6		43.6	

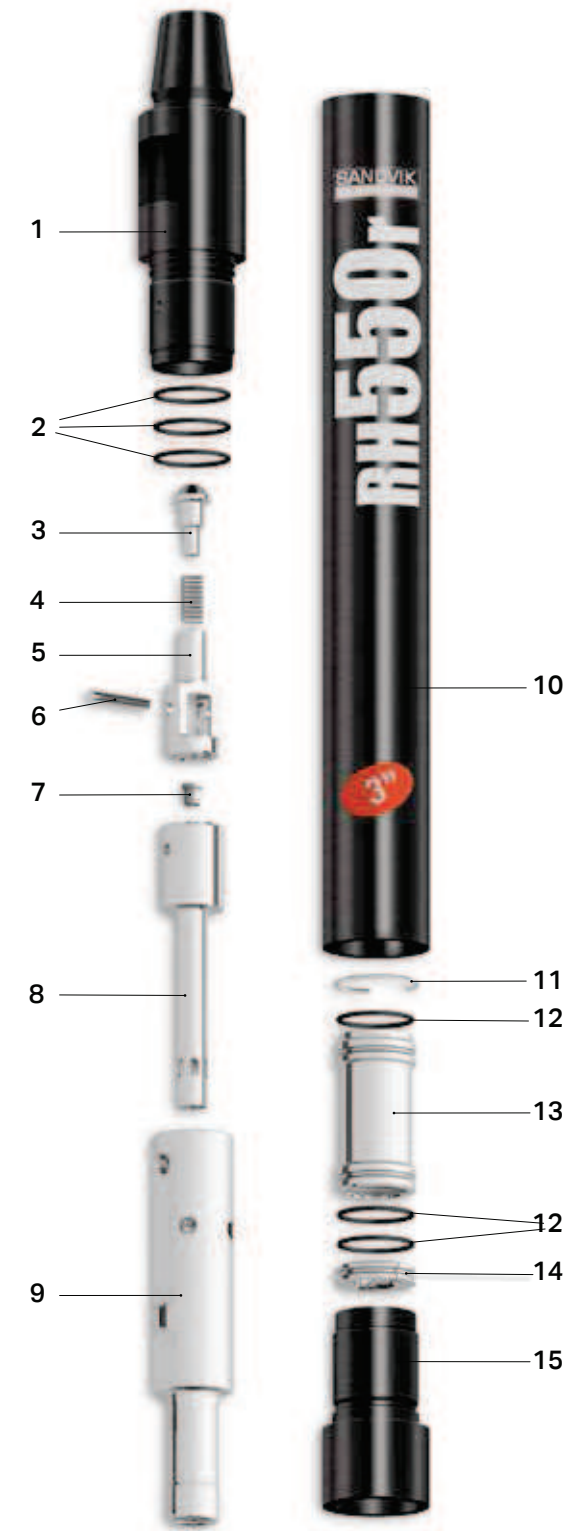
RH550w 6"



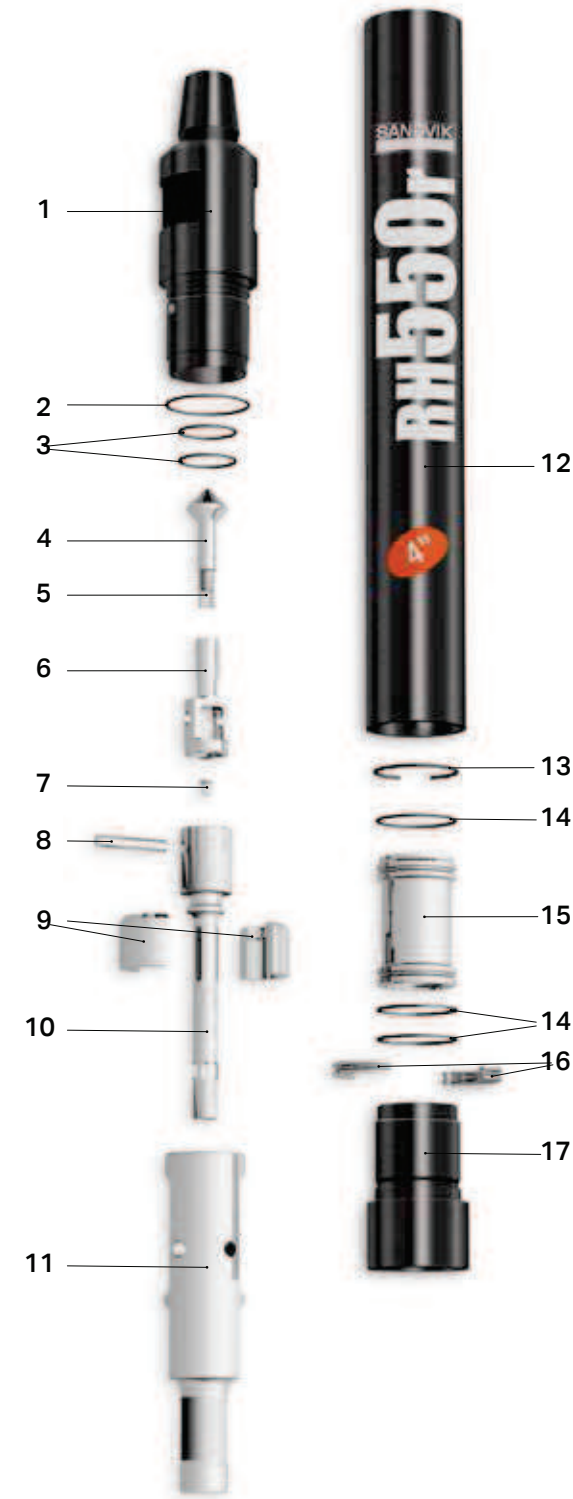
Replacement parts	Item description	Part No.
Complete hammer		
	3 1/2" API reg. pin	32-5560-WMA/04S
Bit shank		
	M60	



Weight		Outside diameter		Hammer length		Hammer length with bit					
kg	lb	mm	inch	mm	inch	Bit closed		Bit extended			
						mm	inch	mm	inch		
72	158	142	5.6	922	36.3	1008	39.7	1046	41.2		
Air consumption, cfm				Air consumption, m³/min							
150 psi		250 psi		350 psi		10 bar		18 bar		24 bar	
395		759		1120		11.2		21.5		31.7	
Low volume option		345		680		1000		9.8		19.3	
										28.3	



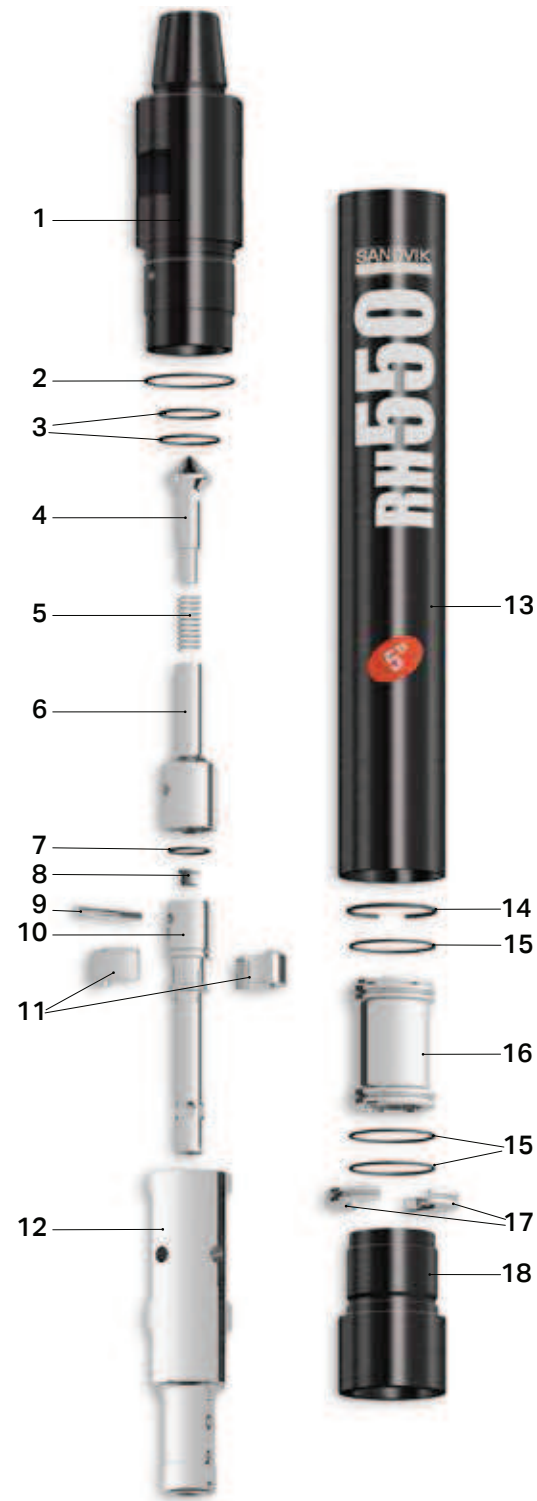
Replacement parts	Item description	Weight		Part No.
		kg	lb	
1.	Top subs			
2	3/8" API reg. pin	5	11	33-3A001/16A
	#21 Cubex. pin	5	11	33-3A001/63A
2.	O-ring top sub (3) ID and OD			In seal kit
3.	Check valve dart with spring	0.3	0.7	25-99006A
4.	Check valve dart spring	0.02	0.01	22-99071
5.	Check valve guide	0.23	0.5	39-3A001
6.	Feed tube retainer pin	0.03	0.1	12-99021
7.	Choke set, blank 1/8", 3/16", & 1/4"	0.1	0.2	29-48017A
8.	Feed tube with retainer pin & blank choke	0.45	1	37-3A001A
9.	Piston	3.86	8.5	36-3A081
10.	Piston case with retainer ring	10.9	24	35-3A006A
11.	Piston retainer ring	0.05	0.1	23-99027
12.	O-rings - guide sleeve, bit retainer (3)			In seal kit
13.	Guide sleeve with 2 O-rings (#12)	1	2.2	26-3A010A
14.	Bit retainer ring with O-ring (#12)	0.09	0.2	27-3A006A
15.	Driver sub (O-ring not req.)	2.18	4.8	34-3A006
Seal Kit				
	3 piece of #2 & 3 of #12	0.25	0.5	38-3A056
Rebuild Kit				
	1 piece of #1, 1 of #10, 1 of #15 & seal kit			
	2 3/8" API reg. pin	18.1	40	38-3A001/16
	#21 Cubex. pin	18.1	40	33-3A001/63



Replacement parts	Item description	Weight		Part No.
		kg	lb	
1.	Top subs with 3 O-rings			
2	3/8" API reg. pin	10	22	33-48001-1/16A
	2 7/8" API reg. pin	10	22	33-48001-1/11A
	#24 Cubex. pin	10	22	33-48001-1/77A
2.	O-ring top sub OD (1)			In seal kit
3.	O-ring top sub ID (2)			In seal kit
4.	Check valve dart (with spring)	0.3	0.66	25-99001A
5.	Check valve spring	0.02	0.04	22-99071
6.	Check valve guide	0.2	0.44	39-48001-1
7.	Choke set, blank 1/8", 3/16", & 1/4"	0.1	0.22	29-48017A
8.	Feed tube retainer pin	0.03	0.07	12-99014
9.	Tuning ring for low volume (optional)	0.23	0.51	56-48552
10.	Feed tube with retainer pin and blank choke	0.7	1.54	37-48001-1A
11.	Piston	7	15.4	36-48J81
12.	Piston case with retainer ring	15	33	35-48014A
13.	Piston retainer ring	0.05	0.11	23-99029
14.	O-rings guide sleeve & bit ret. (3)			In seal kit
15.	Guide sleeve with 2 O-rings (#14)	1.8	3.96	26-48J10A
16.	Bit retainer ring with O-ring (#14)	0.23	0.51	27-48006A
17.	Driver sub	3.2	7.04	34-48006
Seal Kit				
	1 piece of #2, 2 of #3 & 3 of #14	0.25	0.5	38-48056-1
Rebuild Kit				
	1 piece of #1, 1 of #12, 1 of #17 & seal kit			
	2 3/8" API reg. pin	28	62	38-48001/16
	2 7/8" API reg. pin	28	62	38-48001/11
	#24 Cubex. pin	28	62	38-48001/77

RH550

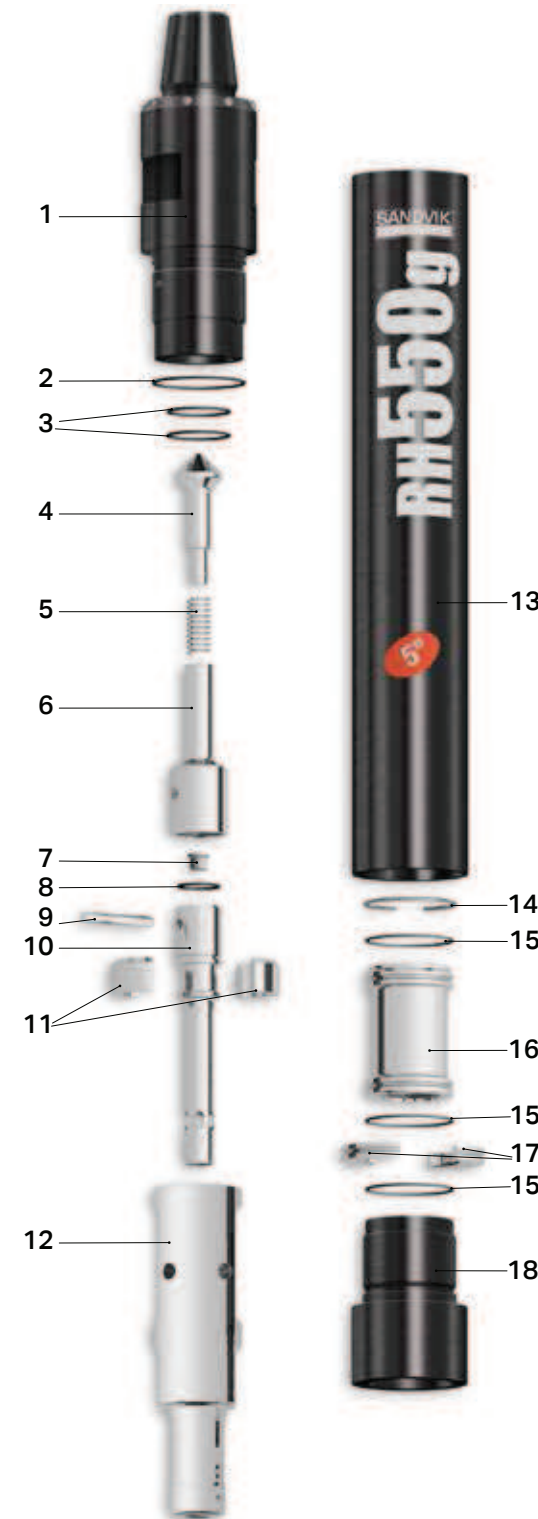
5"



Replacement parts Item description	Weight		Part No.
	kg	lb	
1. Top subs with 3 O-rings			
3 1/2" API reg. pin	10	22	33-58D01/04A
2 7/8" API reg. pin	10	22	33-58D01/11A
2. O-ring top sub OD (1)			In seal kit
3. O-ring top sub ID (2)			In seal kit
4. Check valve dart (with spring)	0.3	0.66	25-99002A
5. Check valve spring	0.02	0.04	22-99072
6. Check valve guide	0.3	0.66	39-58S01
7. O-Ring feed tube (1)			In seal kit
8. Choke set, blank 1/8", 3/16", & 1/4"	0.12	0.26	29-68017A
9. Feed tube retainer pin	0.09	0.2	12-99018
10. Feed tube with retainer pin and blank choke	1	2.2	37-58001A
11. Tuning ring for low volume (optional)	0.03	0.07	56-58552
12. Piston	12	26.4	36-58J81
13. Piston case with retainer ring	27	59.4	35-58D06A
14. Piston retainer ring	0.05	0.11	23-99032
15. O-rings guide sleeve & bit ret. (3)			In seal kit
16. Guide sleeve with 2 O-rings (#14)	3	6.6	26-58J10A
17. Bit retainer ring with O-ring (#14)	0.5	1.1	27-58006A
18. Driver sub	6	13.2	34-58D69
Seal Kit			
1 piece of #2, 2 of #3, 1 of #7 & 3 of #15	0.45	0.99	38-58D56
Rebuild Kit			
1 piece of #1, 1 of #13, 1 of #18 & seal kit			
3 1/2" API reg. pin	43	94.6	38-58D01/04
2 7/8" API reg. pin	43	94.6	38-58D01/11

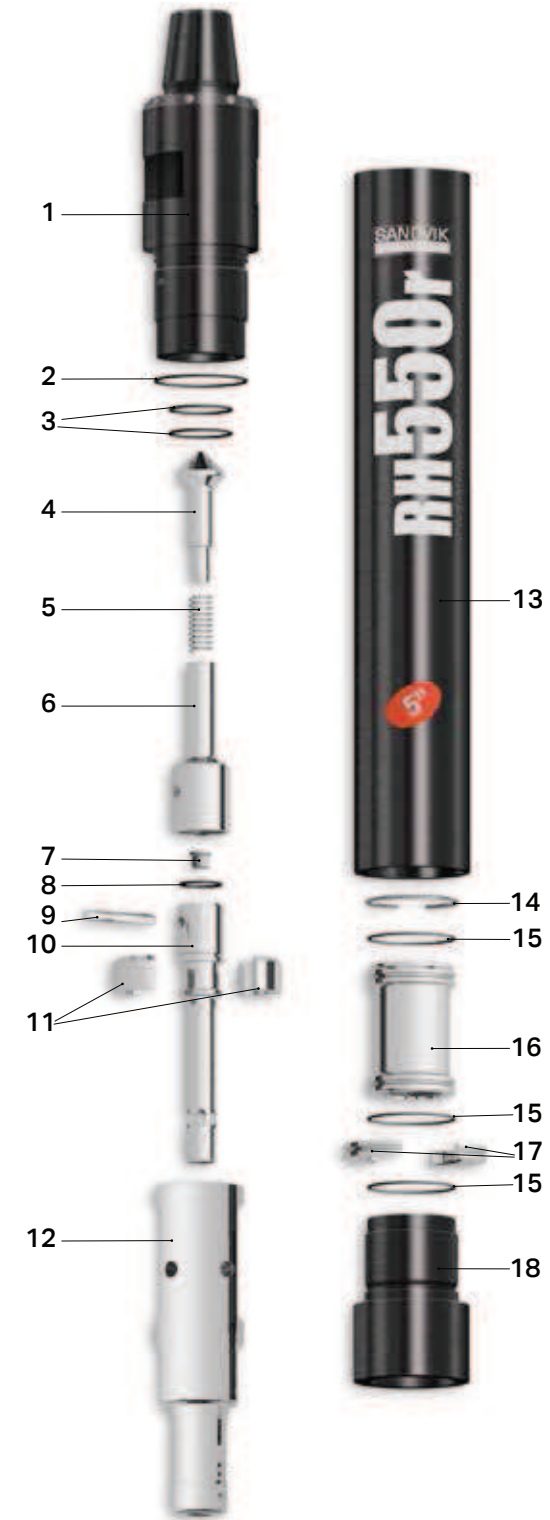
RH550g

5"



Replacement parts Item description	Weight		Part No.
	kg	lb	
1. Top subs with 3 O-rings			
3 1/2" API reg. pin	18	39.6	33-58D02/04CA
#24 Cubex. pin	18	39.6	33-58D02/77CA
2. O-ring top sub OD (1)			In seal kit
3. O-ring top sub ID (2)			In seal kit
4. Check valve dart (with spring)	0.3	0.66	25-99002A
5. Check valve spring	0.02	0.04	22-99072
6. Check valve guide	0.3	0.66	39-58S01
7. Choke set, blank 1/8", 3/16", & 1/4"	0.12	0.26	29-68017A
8. O-ring feed tube (1)			In seal kit
9. Feed tube retainer pin	0.09	0.2	12-99018
10. Feed tube with retainer pin and blank choke	1	2.2	37-58001A
11. Tuning ring for low volume (optional)	0.03	0.07	56-58552
12. Piston	12	26.4	36-58J81
13. Piston case with retainer ring	29	63.8	35-58D07A
14. Piston retainer ring	0.05	0.11	23-99032
15. O-rings guide sleeve & bit ret. (3)			In seal kit
16. Guide sleeve with 2 O-rings (#14)	3	6.6	26-58J10A
17. Bit retainer ring with O-ring (#14)	0.5	1.1	27-58006A
18. Driver sub	7	15.4	34-58D70
Seal Kit			
1 piece of #2, 2 of #3, 1 of #7 & 3 of #15	0.45	0.99	38-58D56
Rebuild Kit			
1 piece of #1, 1 of #13, 1 of #18 & seal kit			
3 1/2" API reg. pin	54	118.8	38-58D02/04C
#24 Cubex. pin	54	118.8	38-58D02/77C

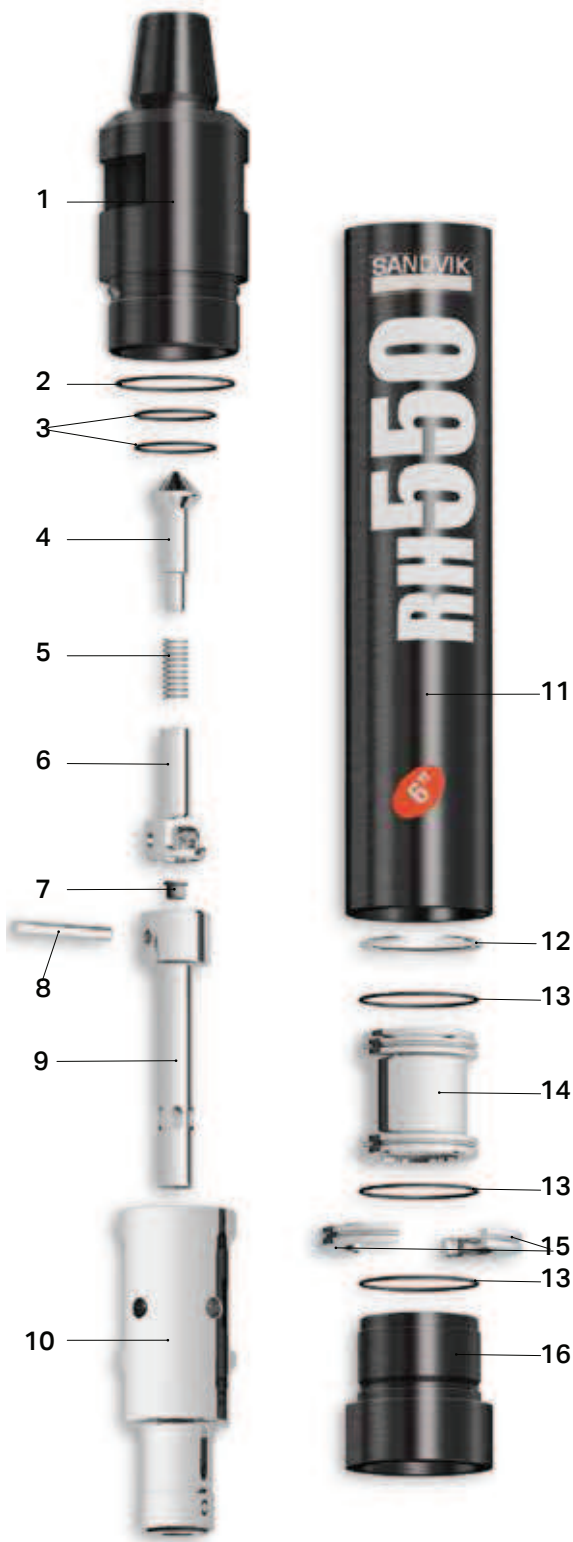
RH550r



Replacement parts Item description	Weight		Part No.
	kg	lb	
1. Top subs with 3 O-rings			
3 1/2" API reg. pin	18	39.6	33-58S02/04CA
2 7/8" API reg. pin	18	39.6	33-58S02/11CA
#24 Cubex. pin	18	39.6	33-58S02/77CA
2. O-Ring top sub OD (1)			In seal kit
3. O-Ring top sub ID (2)			In seal kit
4. Check valve dart (with spring)	0.3	0.66	25-99002A
5. Check valve spring	0.02	0.04	22-99072
6. Check valve guide	0.3	0.66	39-58S01
7. Choke set, blank 1/8", 3/16", & 1/4"	0.12	0.26	29-68017A
8. O-ring feed tube (1)			In seal kit
9. Feed tube retainer pin	0.09	0.2	12-99018
10. Feed tube with retainer pin and blank choke	1	2.2	37-58001A
11. Tuning ring for low volume (optional)	0.03	0.07	56-58552
12. Piston	12	26.4	36-58J81
13. Piston case with retainer ring	29	63.8	35-58007A
14. Piston retainer ring	0.05	0.11	23-99032
15. O-rings guide sleeve & bit ret. (3)			In seal kit
16. Guide sleeve with 2 O-rings (#14)	3	6.6	26-58J10A
17. Bit retainer ring with O-ring (#14)	0.5	1.1	27-58006A
18. Driver sub	7	15.4	34-58070
Seal Kit			
1 piece of #2, 2 of #3, 1 of #7 & 3 of #15	0.45	0.99	38-58D56
Rebuild Kit			
1 piece of #1, 1 of #13, 1 of #18 & seal kit			
3 1/2" API reg. pin	54	118.8	38-58S02/04C
2 7/8" API reg. pin	54	118.8	38-58S02/11C
#24 Cubex. pin	54	118.8	38-58S02/77C

5"

RH550

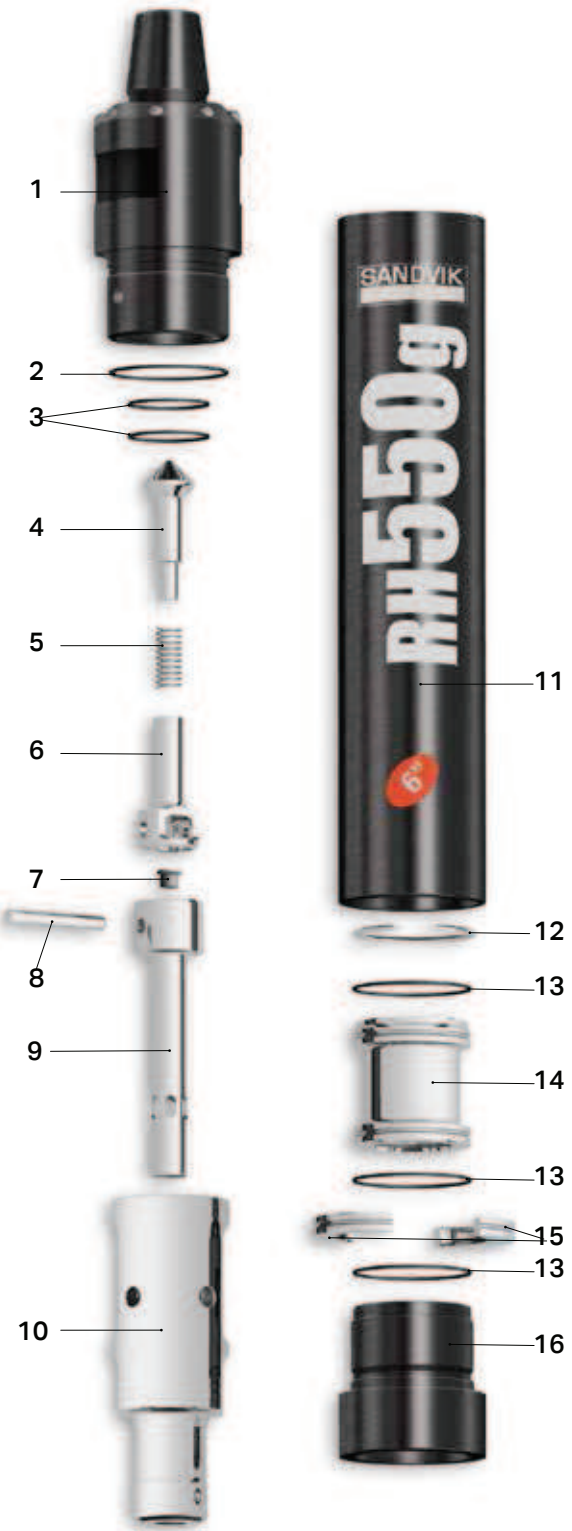


Replacement parts Item description	Weight		Part No.
	kg	lb	
1. Top sub with 3 O-rings			
3 1/2" API reg. pin	20	44	33-68D08/04A
2. O-ring top sub OD (1)			In seal kit
3. O-ring top sub ID (2)			In seal kit
4. Check valve dart with spring	0.3	0.66	25-99002A
5. Check valve dart spring	0.02	0.044	22-99072
6. Check valve guide	0.3	0.66	39-68001
7. Choke set, blank 1/8", 3/16", & 1/4"	0.12	0.264	29-68017A
8. Feed tube retainer pin	0.2	0.44	12-99013
9. Feed tube with retainer pin and blank choke	1	2.2	37-68601A
10. Piston	18	39.6	36-68J81
11. Piston case with retainer ring	33	72.6	35-68D14A
12. Piston retainer ring	0.1	0.22	23-99028
13. O-rings - guide sleeve, bit retainer (3)			In seal kit
14. Guide sleeve with 2 O-rings (#13)	4	8.8	26-68J10A
15. Bit retainer ring with O-ring (#13)	1	2.2	27-68006A
16. Driver sub	6	13.2	34-68D69
Seal Kit			
1 piece of #2, 2 of #3 & 3 of #13	0.25	0.55	38-68656
Rebuild Kit			
1 piece of #1, 1 of #11, 1 of #16 & seal kit			
3 1/2" API reg. pin	20	44	38-68D08/04

6"

RH550g

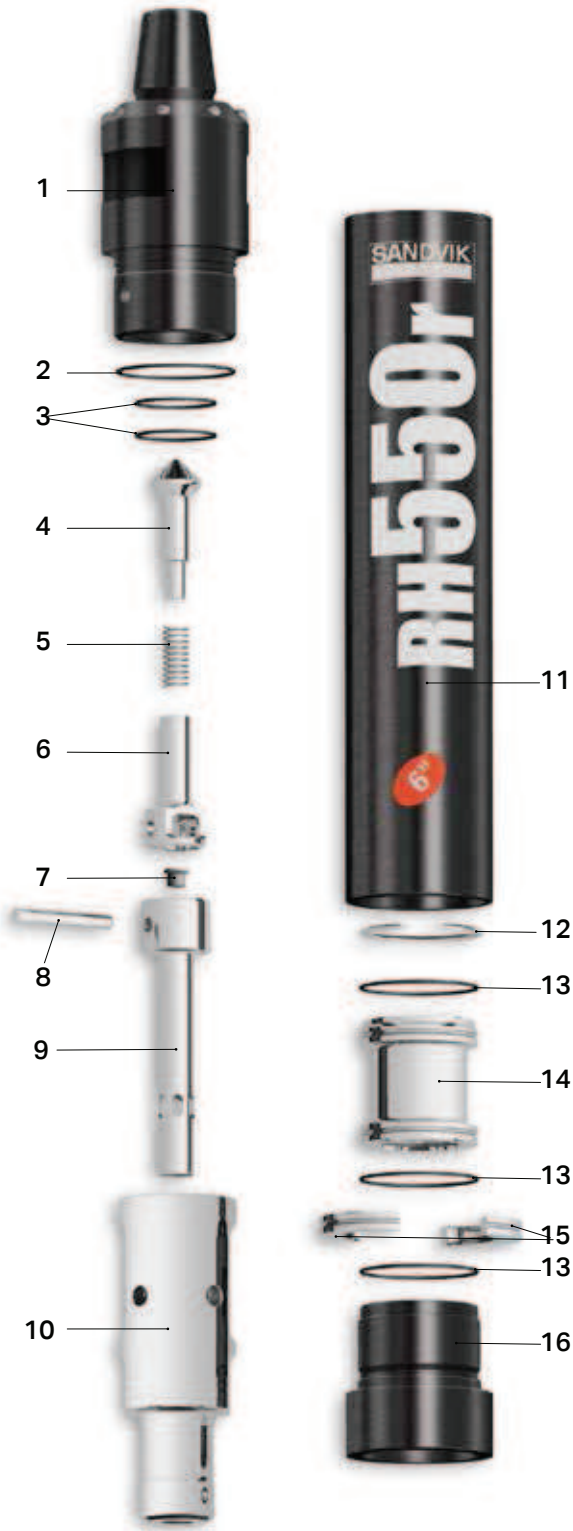
6"



Replacement parts Item description	Weight		Part No.
	kg	lb	
1. Top sub with 3 O-rings			
3 1/2" API reg. pin	22	48.4	33-6L009/04CA
#28 Cubex. pin	22	48.4	33-6L009/56CA
2. O-ring top sub OD (1)			In seal kit
3. O-ring top sub ID (2)			In seal kit
4. Check valve dart with spring	0.3	0.66	25-99002A
5. Check valve dart spring	0.02	0.044	22-99072
6. Check valve guide	0.3	0.66	39-68001
7. Choke set, blank 1/8", 3/16", & 1/4"	0.12	0.264	29-68017A
8. Feed tube retainer pin	0.2	0.44	12-99013
9. Feed tube with retainer pin and blank choke	1	2.2	37-68601A
10. Piston	18	39.6	36-68J81
11. Piston case with retainer ring	33	72.6	35-6LD68A
12. Piston retainer ring	0.1	0.22	23-99028
13. O-rings - guide sleeve, bit retainer (3)			In seal kit
14. Guide sleeve with 2 O-rings (#13)	4	8.8	26-68J10A
15. Bit retainer ring with O-ring (#13)	1	2.2	27-68006A
16. Driver sub	6	13.2	34-6LD70
Seal Kit			
1 pieces of #2, 2 of #3 & 3 of #13	0.25	0.5	38-68656
Rebuild Kit			
1 piece of #1, 1 of #11, 1 of #16 & seal kit			
3 1/2" API reg. pin	62	136.4	38-6LD09/04C
#28 Cubex. pin	62	136.4	38-6LD09/56C

RH550r

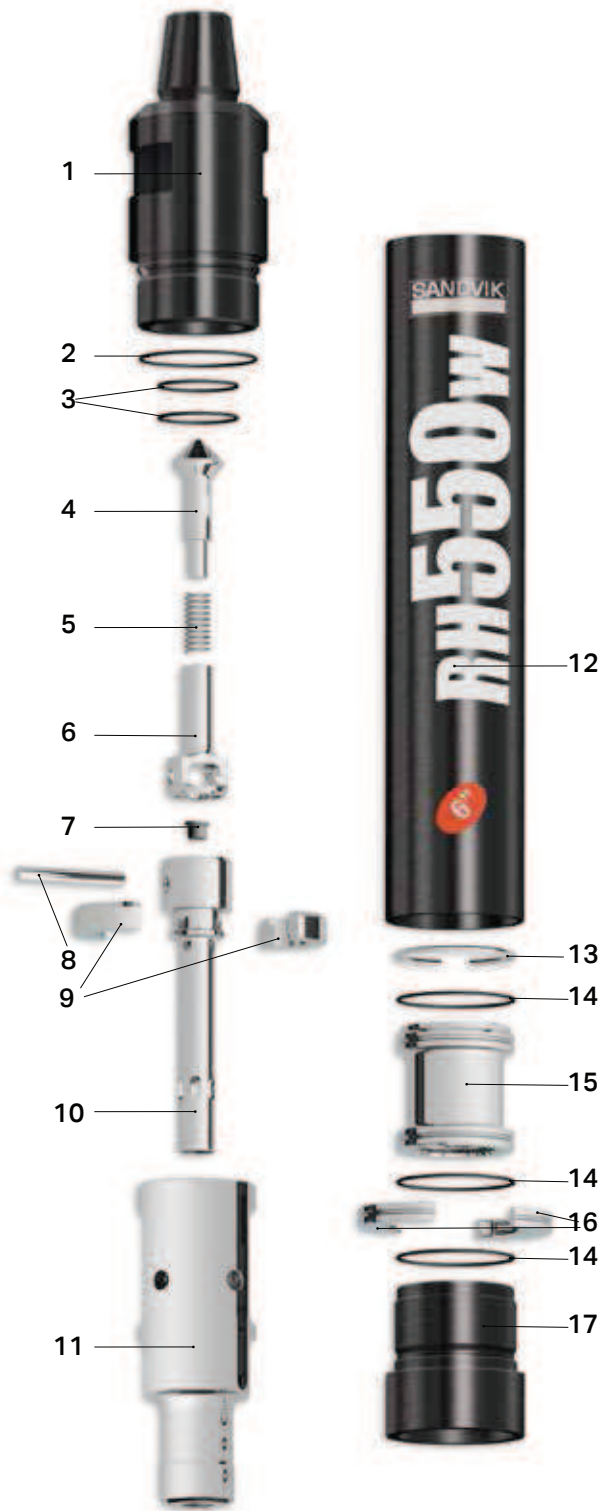
6"



Replacement parts Item description	Weight		Part No.
	kg	lb	
1. Top sub with 3 O-rings			
3 1/2" API reg. pin	22	48.4	33-68602/04CA
#28 Cubex. pin	22	48.4	33-68602/56CA
3 1/2" BECO. pin	22	48.4	33-68602/55CA
2. O-ring top sub OD (1)			In seal kit
3. O-ring top sub ID (2)			In seal kit
4. Check valve dart with spring	0.3	0.66	25-99002A
5. Check valve dart spring	0.02	0.044	22-99072
6. Check valve guide	0.3	0.66	39-68001
7. Choke set, blank 1/8", 3/16", & 1/4"	0.12	0.264	29-68017A
8. Feed tube retainer pin	0.2	0.44	12-99013
9. Feed tube with retainer pin and blank choke	1	2.2	37-68601A
10. Piston	18	39.6	36-68J81
11. Piston case with retainer ring	33	72.6	35-68668A
12. Piston retainer ring	0.1	0.22	23-99028
13. O-rings - guide sleeve, bit retainer (3)			In seal kit
14. Guide sleeve with 2 O-rings (#13)	4	8.8	26-68J10A
15. Bit retainer ring with O-ring (#13)	1	2.2	27-68006A
16. Driver sub	6	13.2	34-68670
Seal Kit			
1 pieces of #2, 2 of #3 & 3 of #13	0.25	0.5	38-68656
Rebuild Kit			
1 piece of #1, 1 of #11, 1 of #16 & seal kit			
3 1/2" API reg. pin	62	136.4	38-68602/04C
#28 Cubex. pin	62	136.4	38-68602/56C
3 1/2" BECO. pin	62	136.4	38-68602/55C

RH550w

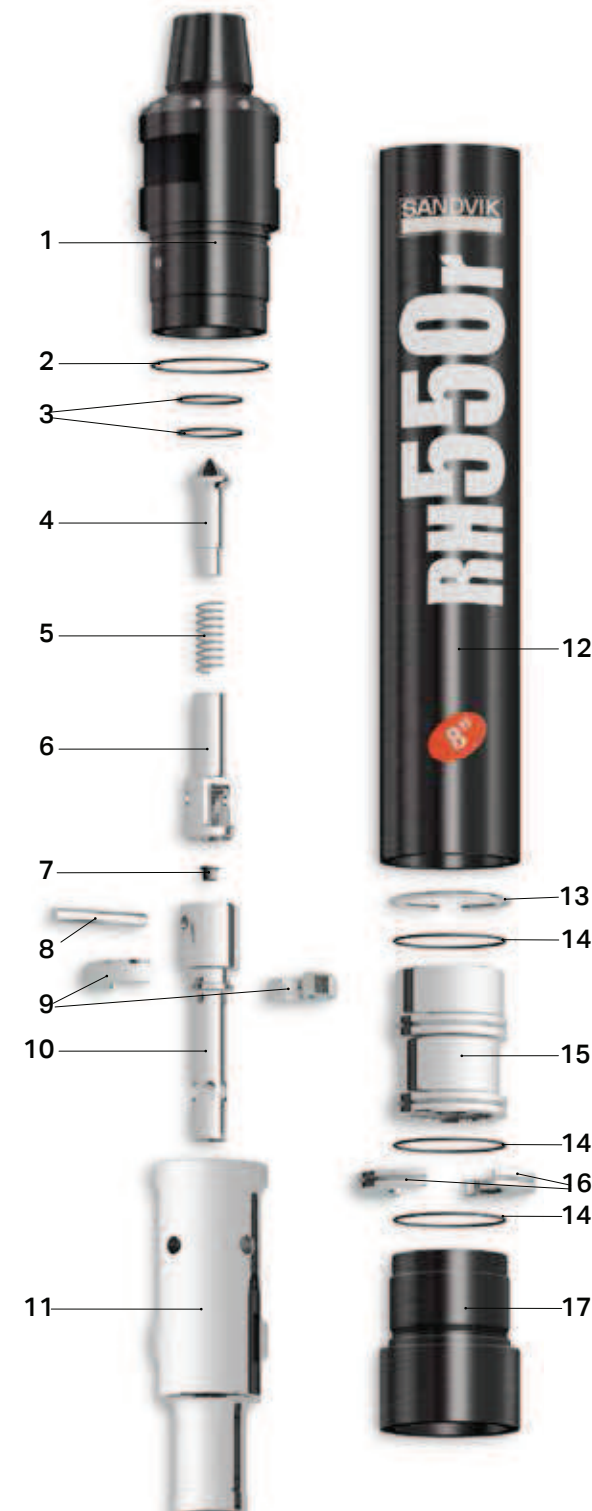
6"



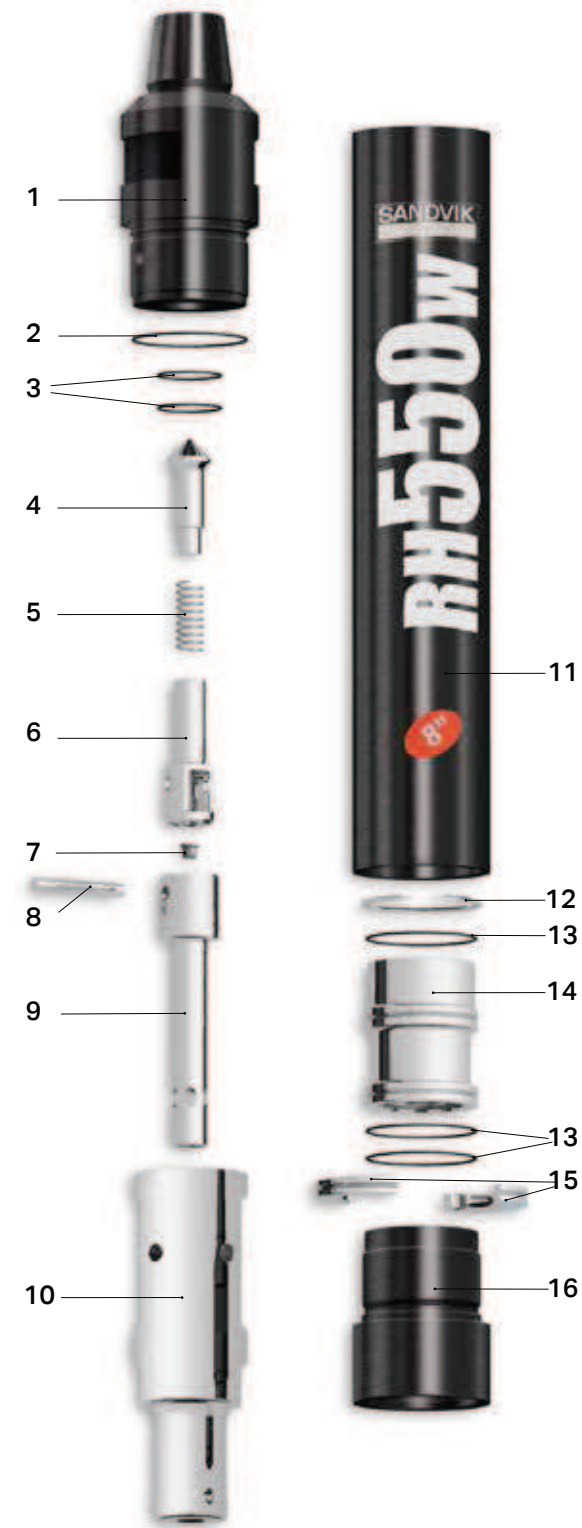
Replacement parts	Item description	Weight		Part No.
		kg	lb	
1.	Top sub with 3 O-rings			
	3 1/2" API reg. pin	20	44	33-68N08/04A
2.	O-ring top sub OD (1)			In seal kit
3.	O-ring top sub ID (2)			In seal kit
4.	Check valve dart with spring	0.3	0.66	25-99002A
5.	Check valve dart spring	0.02	0.044	22-99072
6.	Check valve guide	0.3	0.66	39-68001
7.	Choke set, blank 1/8", 3/16", & 1/4"	0.12	0.264	29-68017A
8.	Feed tube retainer pin	0.2	0.44	12-99013
9.	Tuning ring (optional)	0.4	0.9	56-68552
10.	Feed tube with retainer pin and blank choke	1	2.2	37-68301A
11.	Piston	18	39.6	36-68J81
12.	Piston case with retainer ring	33	72.6	35-68D14A
13.	Piston retainer ring	0.1	0.22	23-99028
14.	O-rings - guide sleeve, bit retainer (3 req.)			In seal kit
15.	Guide sleeve with 2 O-rings (#13)	4	8.8	26-68J10A
16.	Bit retainer ring with O-ring (#13)	1	2.2	27-68006A
17.	Driver sub	6	13.2	34-68D69
Seal Kit				
	1 pieces of #2, 2 of #3 & 3 of #14	0.25	0.5	38-68656
Rebuild Kit				
	1 piece of #1, 1 of #12, 1 of #17 & seal kit			
	3 1/2" API reg. pin	20	44	38-68N08/04

RH550r

8"



Replacement parts	Item description	Weight		Part No.
		kg	lb	
1.	Top sub with 3 O-rings			
	4 1/2" API reg. pin	42	92.4	33-88002/19CA
2.	O-ring top sub OD (1)			In seal kit
3.	O-ring top sub ID (2)			In seal kit
4.	Check valve dart (with spring)	0.5	1.1	38-11663A
5.	Check valve spring	0.1	0.22	38-1/1235-073
6.	Check valve guide	0.7	1.54	39-88001
7.	Choke set, blank 1/8", 3/16", & 1/4"	0.12	0.264	29-68017A
8.	Feed tube retainer pin	0.2	0.44	12-99016
9.	Tuning ring for low volume (optional)	0.8	1.76	56-88552
10.	Feed tube with retainer pin and blank choke	2.2	4.84	37-88001A
11.	Piston	42	92.4	36-88J81
12.	Piston case with retainer ring	56	123.2	35-88002A
13.	Piston retainer ring	0.2	0.44	23-99030
14.	O-rings guide sleeve & bit ret. (3)			In seal kit
15.	Guide sleeve with 2 O-rings (#14)	11	24.2	26-88J10A
16.	Bit retainer ring with O-ring (#14)	1.9	4.18	27-88006A
17.	Driver sub	17	37.4	34-88007
Seal Kit				
	1 piece of #2, 2 of #3 & 3 of #14	0.25	0.55	38-88056
Rebuild Kit				
	1 piece of #1, 1 of #12, 1 of #17 & seal kit			
	4 1/2" API reg. pin	115	253	38-88002/19C



Replacement parts	Item description	Weight		Part No.
		kg	lb	
1.	Top sub with 3 O-rings			
	4 1/2" API reg. pin	42	92.4	33-88302/19A
2.	O-ring top sub OD (1)			In seal kit
3.	O-ring top sub ID (2)			In seal kit
4.	Check valve dart (with spring)	0.5	1.1	38-11663A
5.	Check valve spring	0.1	0.22	38-1/1235-073
6.	Check valve guide	0.7	1.54	39-88001
7.	Choke set, blank 1/8", 3/16", & 1/4"	0.12	0.26	29-68017A
8.	Feed tube retainer pin	0.2	0.44	12-99016
9.	Feed tube with retainer pin and blank choke	2.2	4.84	37-88301A
10.	Piston	42	92.4	36-88J81
11.	Piston case with retainer ring	56	123.2	35-88302A
12.	Piston retainer ring	0.2	0.44	23-99030
13.	O-rings guide sleeve & bit ret. (3)			In seal kit
14.	Guide sleeve with 2 O-rings (#14)	11	24.2	26-88J10A
15.	Bit retainer ring with O-ring (#14)	1.9	4.18	27-88006A
16.	Driver sub	17	37.4	34-88007
Seal Kit				
	1 piece of #2, 2 of #3 & 3 of #13	0.25	0.55	38-88056
Rebuild Kit				
	1 piece of #1, 1 of #11, 1 of #16 & seal kit			
	4 1/2" API reg. pin	115	253	38-88302/19



RH460 4"



Replacement parts	Item description	Part No.
Complete Hammer		
	2 3/8" API reg pin	32-4640-SDA-16S
	#24 Cubex pin	32-4640-SDA-77S
Bit shank		
	DHD340	



Weight		Outside diameter		Hammer length		Hammer length with bit			
kg	lb	mm	inch	mm	inch	Bit closed		Bit extended	
						mm	inch	mm	inch
40	88	97.5	3.84	985	38.78	1075	42.16	1109	43.66
Air consumption, cfm			Air consumption, m ³ /min, DIN 1343			Power output [kW]			
150 psi	250 psi	350 psi	10 bar	18 bar	24 bar	24 bar			
177	399	565	5	11.3	16	23.5			

RH460 5"



Replacement parts	Item description	Part No.
Complete Hammer		
	3 1/2" API reg pin	32-4650-SQA-04S
Bit shank		
	QL50	



Weight		Outside diameter		Hammer length		Hammer length with bit			
kg	lb	mm	inch	mm	inch	Bit closed		Bit extended	
						mm	inch	mm	inch
66	145	120	4.72	1067	42.01	1156	45.51	1185	46.65
Air consumption, cfm			Air consumption, m ³ /min, DIN 1343			Power output [kW]			
150 psi	250 psi	350 psi	10 bar	18 bar	24 bar	24 bar			
286	540	770	8.1	15.3	21.8	32.1			

RH460 4"



Replacement parts	Item description	Part No.
Complete Hammer		
	2 3/8" API reg pin	32-4640-STA-16S
	#24 Cubex pin	32-4640-STA-77S
Bit shank		
	QLX40	



Weight		Outside diameter		Hammer length		Hammer length with bit			
kg	lb	mm	inch	mm	inch	Bit closed		Bit extended	
						mm	inch	mm	inch
40	88	97.5	3.84	985	38.78	1075	42.16	1109	43.66
Air consumption, cfm			Air consumption, m ³ /min, DIN 1343			Power output [kW]			
150 psi	250 psi	350 psi	10 bar	18 bar	24 bar	24 bar			
177	399	565	5	11.3	16	23.5			

RH460g 5"



Replacement parts	Item description	Part No.
Complete Hammer		
	3 1/2" API reg pin	32-4655-GQA-04C
	#24 Cubex pin	32-4655-GQA-77C
Bit shank		
	QL50	



Weight		Outside diameter		Hammer length		Hammer length with bit			
kg	lb	mm	inch	mm	inch	Bit closed		Bit extended	
						mm	inch	mm	inch
76	167	126	4.96	1067	42.01	1156	45.51	1185	46.65
Air consumption, cfm			Air consumption, m ³ /min, DIN 1343			Power output [kW]			
150 psi	250 psi	350 psi	10 bar	18 bar	24 bar	24 bar			
286	540	770	8.1	15.3	21.8	32.1			

RH460hp 4"



Replacement parts	Item description	Part No.
Complete Hammer		
	2 3/8" API reg pin	32-4640-ETB-16S
Bit shank		
	QLX40	



Weight		Outside diameter		Hammer length		Hammer length with bit			
kg	lb	mm	inch	mm	inch	Bit closed		Bit extended	
						mm	inch	mm	inch
41	90	97.5	3.84	985	38.78	1075	42.16	1109	43.66
Air consumption, cfm			Air consumption, m ³ /min, DIN 1343			Power output [kW]			
250 psi	350 psi	500 psi	18 bar	24 bar	35 bar	35 bar			
364	519	805	10.3	14.7	22.8	32			

RH460hp 5"



Replacement parts	Item description	Part No.
Complete Hammer		
	3 1/2" API reg pin	32-4655-EQB-04C
Bit shank		
	QL50	



Weight		Outside diameter		Hammer length		Hammer length with bit			
kg	lb	mm	inch	mm	inch	Bit closed		Bit extended	
						mm	inch	mm	inch
76	168	126	4.96	1067	42.01	1156	45.51	1185	46.65
Air consumption, cfm			Air consumption, m ³ /min, DIN 1343			Power output [kW]			
250 psi	350 psi	500 psi	18 bar	24 bar	35 bar	35 bar			
501	692	1102	14.2	19.6	31.2	41.6			

RH460 6"



Replacement parts	Item description	Part No.
Complete Hammer		
	3 1/2" API reg pin	32-4660-SQA-04S
Bit shank		
	QL60	



Weight		Outside diameter		Hammer length		Hammer length with bit			
kg	lb	mm	inch	mm	inch	Bit closed		Bit extended	
						mm	inch	mm	inch
100	220	142	5.59	1155	45.47	1263	49.72	1304	51.34
Air consumption, cfm			Air consumption, m ³ /min, DIN 1343			Power output [kW]			
150 psi	250 psi	350 psi	10 bar	18 bar	24 bar	24 bar			
300	632	879	8.5	17.9	25	41.7			

RH460g 8"



Replacement parts	Item description	Part No.
Complete Hammer		
	4 1/2" API reg pin	32-4685-GQA-19C
	4 1/2 BECO pin	32-4685-GQA-72C
Bit shank		
	QL80	



Weight		Outside diameter		Hammer length		Hammer length with bit			
kg	lb	mm	inch	mm	inch	Bit closed		Bit extended	
						mm	inch	mm	inch
244	537	194	7.64	1426	56.14	1566	61.65	1608	63.31
Air consumption, cfm			Air consumption, m ³ /min, DIN 1343			Power output [kW]			
150 psi	250 psi	350 psi	10 bar	18 bar	24 bar	24 bar			
314	862	1274	8.9	24.4	36	49.7			

RH460g 6"



Replacement parts	Item description	Part No.
Complete Hammer		
	3 1/2" API reg pin	32-4665-GQA-04C
	#28 Cubex pin	32-4665-GQA-56C
Bit shank		
	QL60	



Weight		Outside diameter		Hammer length		Hammer length with bit			
kg	lb	mm	inch	mm	inch	Bit closed		Bit extended	
						mm	inch	mm	inch
117	257	150	5.91	1155	45.47	1263	49.72	1304	51.34
Air consumption, cfm			Air consumption, m ³ /min, DIN 1343			Power output [kW]			
150 psi	250 psi	350 psi	10 bar	18 bar	24 bar	24 bar			
300	632	879	8.5	17.9	25	41.7			

RH460 8"



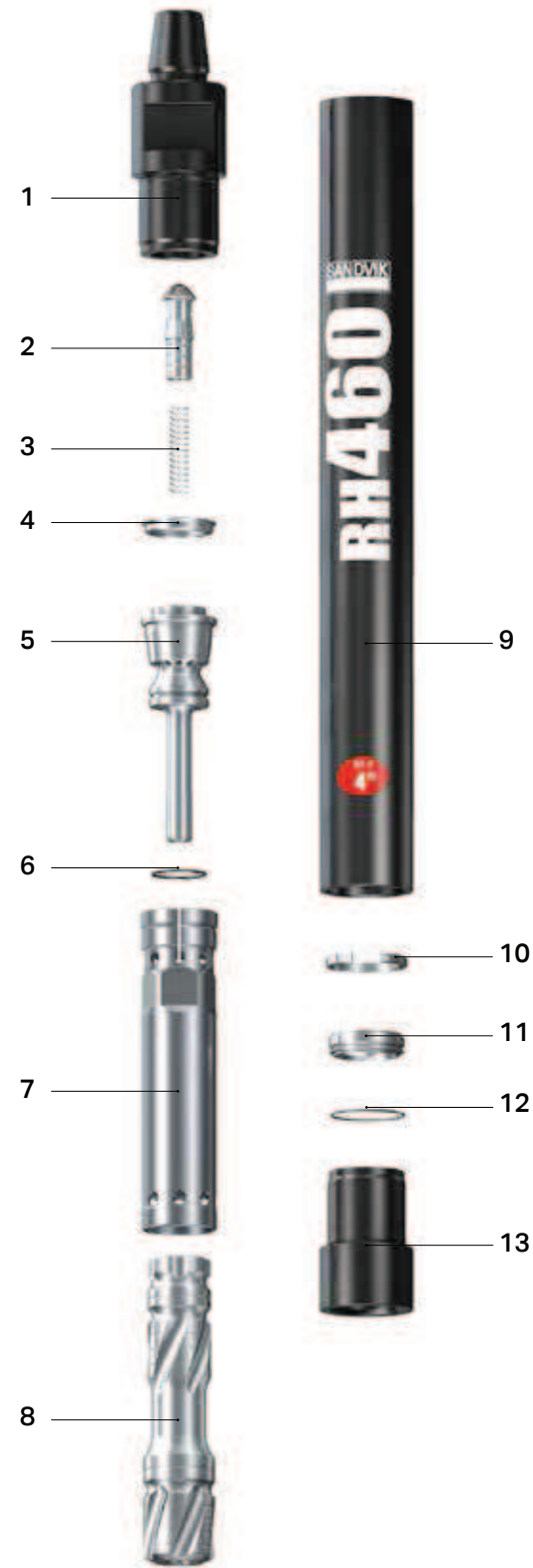
Replacement parts	Item description	Part No.
Complete Hammer		
	4 1/2" API reg pin	32-4680-SQA-19S
Bit shank		
	QL80	



Weight		Outside diameter		Hammer length		Hammer length with bit			
kg	lb	mm	inch	mm	inch	Bit closed		Bit extended	
						mm	inch	mm	inch
213	469	183	7.20	1426	56.14	1566	61.65	1608	63.31
Air consumption, cfm			Air consumption, m ³ /min, DIN 1343			Power output [kW]			
150 psi	250 psi	350 psi	10 bar	18 bar	24 bar	24 bar			
314	862	1274	8.9	24.4	36	49.7			

RH460

4"



Replacement parts	Item description	Weight		Part No.
		kg	lb	
1.	Top sub			
	2 3/8" API reg pin	8.2	18	BG00014822
	#24 Cubex pin	7.9	17.4	BG00242018
	2 7/8" API reg pin	8.8	19.4	BG00388091
2.	Check valve dart no choke	0.24	0.53	BG00320005
3.	Check valve spring	0.02	0.04	BG00118911
4.	Make up ring	0.1	0.22	BG00014825
5.	Air distributor with O-ring	2	4.4	BG00056811
6.	O-ring air distributor			In seal kit
7.	Inner cylinder	2.1	4.62	BG00110688
8.	Piston DHD340	7.8	17.2	BG00243036
9.	Piston case with retainer ring	15.4	33.9	BG00050403
10.	Piston retainer ring	0.1	0.22	BG00014819
11.	Bit retainer ring with O-ring DHD340	0.17	0.37	BG00014818
12.	O-ring bit retainer ring			In seal kit
13.	Driver sub	3.5	7.7	BG00059100
Optional				
	Air screen	0.05	0.11	BG00014743
	Air screen circlip	0.01	0.02	BG00014740
	Choke set, blank, 3mm, 4.5mm and 6mm	0.02	0.04	BG00015430
	Check valve dart with choke hole	0.24	0.53	BG00119068
	Driver sub hard faced DHD340	3.5	7.7	BG00241988
Seal Kit				
	1 piece of #6, #12	0.02	0.04	BG00014848
Rebuild Kit				
	1 piece of #1, #9, #13 & seal kit			
	2 3/8" API reg pin	27	59.4	BG00081841
	#24 Cubex pin	26.8	59	BG00242283

RH460

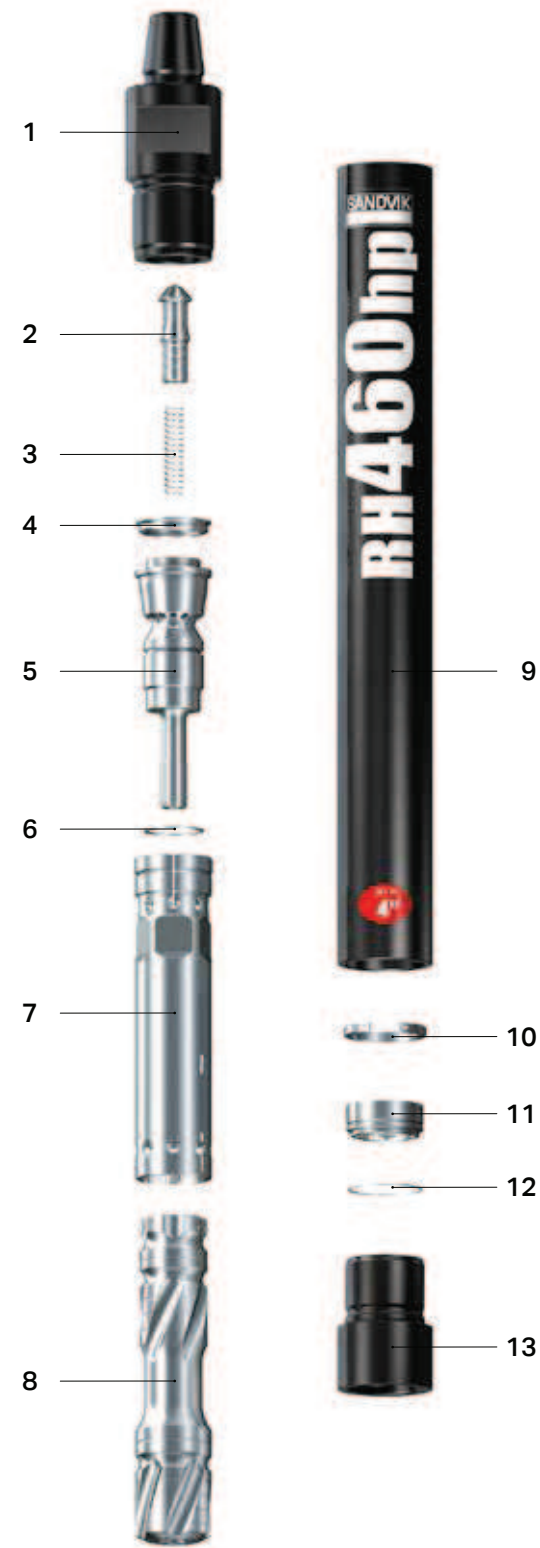
4"



Replacement parts	Item description	Weight		Part No.
		kg	lb	
1.	Top sub			
	2 3/8" API reg pin	8.2	18.	BG00014822
	#24 Cubex pin	7.9	17.4	BG00242018
	2 7/8" API reg pin	8.8	19.4	BG00388091
2.	Check valve dart no choke	0.24	0.53	BG00320005
3.	Check valve spring	0.02	0.04	BG00118911
4.	Make up ring	0.1	0.22	BG00014825
5.	Air distributor with O-ring	2	4.4	BG00056811
6.	O-ring air distributor			In seal kit
7.	Inner cylinder	2.1	4.62	BG00110688
8.	Piston QLX40	7.7	16.9	BG00242889
9.	Piston case with retainer ring	15.4	33.9	BG00050403
10.	Piston retainer ring	0.1	0.22	BG00014819
11.	Bit retainer ring with O-ring QLX40	0.2	0.44	BG00059039
12.	O-ring bit retainer ring			In seal kit
13.	Driver sub	2.8	6.16	BG00058997
Optional				
	Air screen	0.05	0.11	BG00014743
	Air screen circlip	0.01	0.02	BG00014740
	Choke set, blank, 3mm, 4.5mm and 6mm	0.02	0.04	BG00015430
	Check valve dart with choke hole	0.24	0.53	BG00119068
	Driver sub hard faced QLX40	2.8	6.16	BG00242001
Seal Kit				
	1 piece of #6, #12	0.02	0.04	BG00014848
Rebuild Kit				
	1 piece of #1, #9, #13 & seal kit			
	2 3/8" API reg pin	27	59.4	BG00242267
	#24 Cubex pin	26.8	59	BG00242295

RH460hp

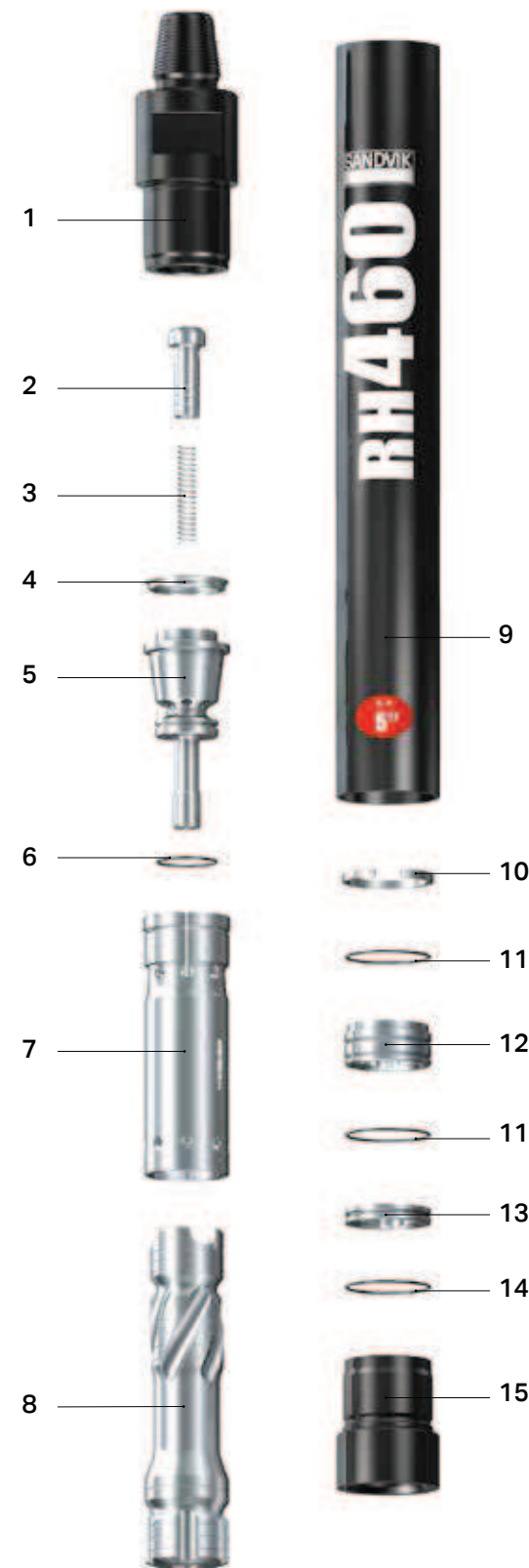
4"



Replacement parts	Item description	Weight		Part No.
		kg	lb	
1.	Top sub			
	2 3/8" API reg pin	8.2	18	BG00014822
	2 7/8" API reg pin	8.8	19.4	BG00388091
2.	Check valve dart no choke	0.24	0.53	BG00320005
3.	Check valve spring	0.02	0.04	BG00118911
4.	Make up ring	0.1	0.22	BG00014825
5.	Air distributor with O-ring	2	4.4	BG00175586
6.	O-ring air distributor			In seal kit
7.	Inner cylinder	2.1	4.62	BG00110688
8.	Piston QLX40	7.7	16.9	BG00242889
9.	Piston case with retainer ring	15.4	33.9	BG00050403
10.	Piston retainer ring	0.1	0.22	BG00014819
11.	Bit retainer ring with O-ring QLX40	0.2	0.44	BG00059039
12.	O-ring bit retainer ring			In seal kit
13.	Driver sub hard faced QLX40	2.8	6.16	BG00242001
Optional				
	Air screen	0.05	0.11	BG00014743
	Air screen circlip	0.01	0.02	BG00014740
	Choke set, blank, 3mm, 4.5mm and 6mm	0.02	0.04	BG00015430
	Check valve dart with choke hole	0.24	0.53	BG00119068
Seal Kit				
	1 piece of #6, #12	0.02	0.04	BG00014848
Rebuild Kit				
	1 piece of #1, #9, #13 & seal kit			
	2 3/8" API reg pin	26.5	58.3	BG00242285

RH460

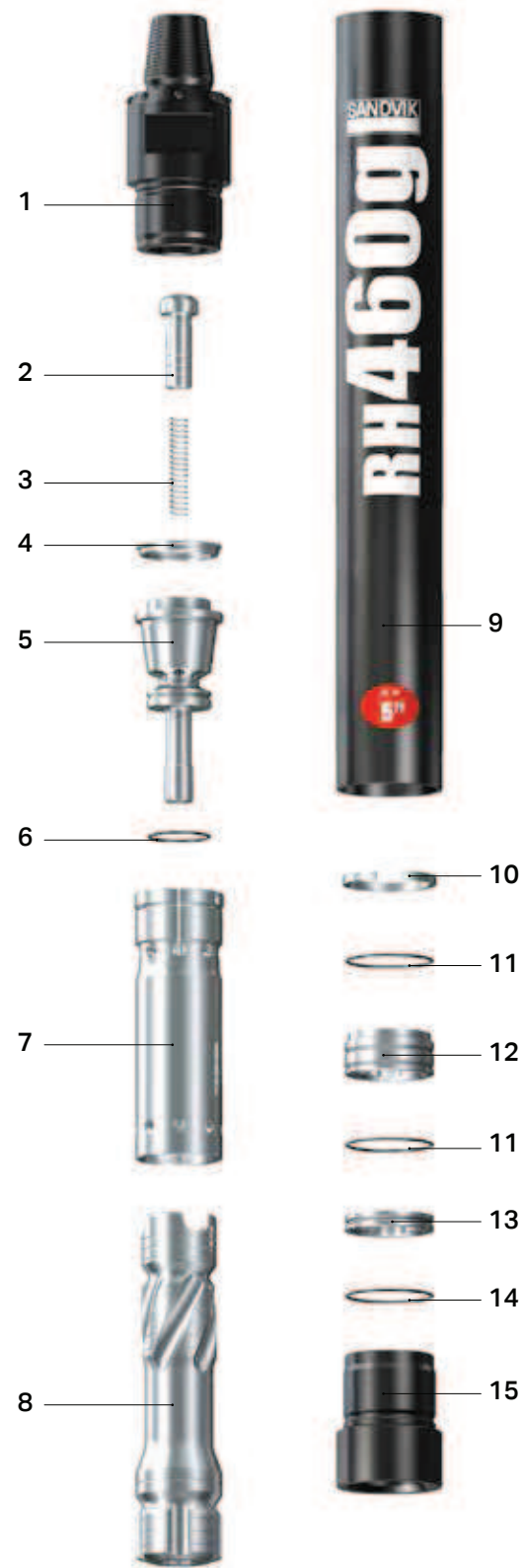
5"



Replacement parts	Item description	Weight		Part No.
		kg	lb	
1.	Top sub			
	3 1/2" API reg pin	14.8	32.56	BG00014995
2.	Check valve dart no choke	0.45	0.99	BG00319921
3.	Check valve spring	0.03	0.07	BG00014972
4.	Make up ring	0.20	0.44	BG00014994
5.	Air distributor with O-ring	3.60	7.92	BG00014996
6.	O-ring air distributor			In seal kit
7.	Inner cylinder	4.2	9.24	BG00025161
8.	Piston	14.3	31.46	BG00062889
9.	Piston case with retainer ring	22	48.4	BG00014999
10.	Piston retainer ring	0.10	0.22	BG00014998
11.	O-ring guide sleeve			In seal kit
12.	Guide sleeve with O-ring	1	2.2	BG00014988
13.	Bit retainer ring with O-ring	0.4	0.88	BG00014989
14.	O-ring bit retainer ring			In seal kit
15.	Driver sub	5	11	BG00014993
Optional				
	Air screen	0.14	0.31	BG00014867
	Air screen circlip	0.01	0.02	BG00014862
	Choke set, blank, 3mm, 4.5mm and 6mm	0.01	0.02	BG00015430
	Check valve dart with choke hole	0.4	0.88	BG00014985
	Driver sub hard faced	5	11	BG00162923
Seal Kit				
	1 piece of #6, #14 & 2 of #11	0.01	0.02	BG00015014
Rebuild Kit				
	1 piece of #1, #9, #15 & seal kit			
	3 1/2" API reg pin	41.5	91.3	BG00081790

RH460g

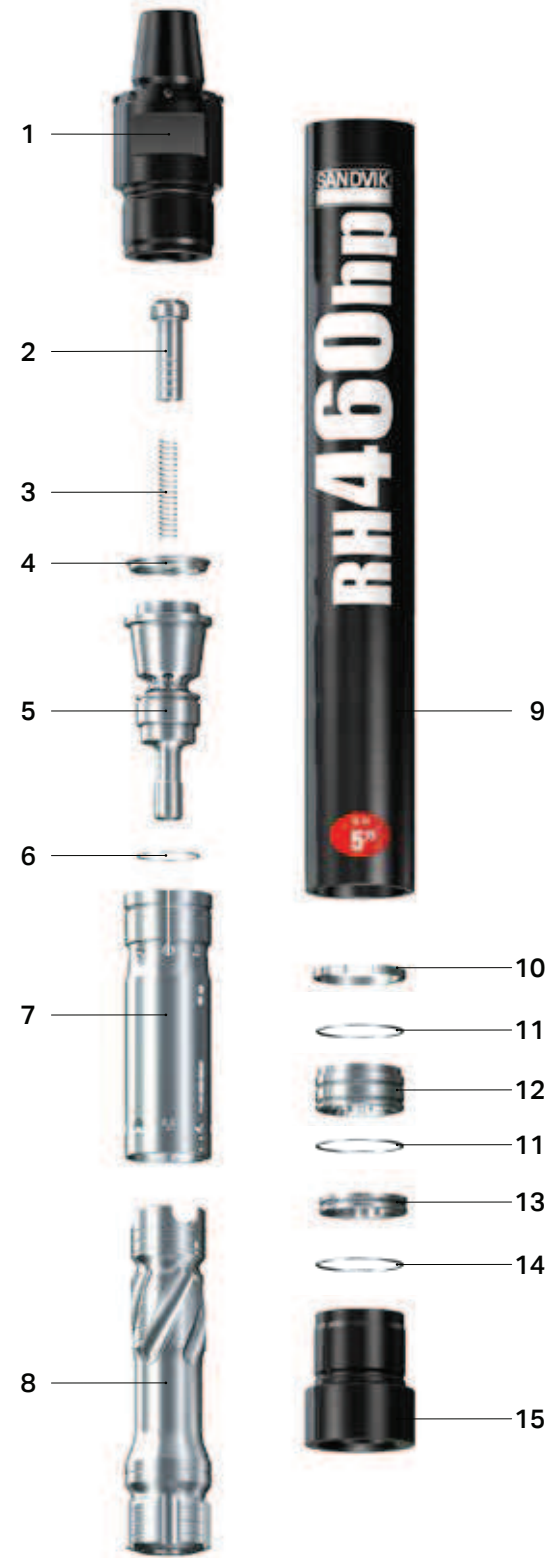
5"



Replacement parts Item description	Weight		Part No.
	kg	lb	
1. Top sub			
3 1/2" API reg pin	15.5	34.1	BG00068455
#24 Cubex pin	13.5	29.7	BG00166404
2. Check valve dart no choke	0.45	0.99	BG00319921
3. Check valve spring	0.03	0.07	BG00014972
4. Make up ring	0.20	0.44	BG00014994
5. Air distributor with O-ring	3.60	7.92	BG00014996
6. O-ring air distributor			In seal kit
7. Inner cylinder	4.20	9.24	BG00025161
8. Piston	14.3	31.5	BG00062889
9. Piston case with retainer ring	30.0	66.0	BG00068439
10. Piston retainer ring	0.10	0.22	BG00014998
11. O-ring guide sleeve			In seal kit
12. Guide sleeve with O-ring	1.00	2.20	BG00014988
13. Bit retainer ring with O-ring	0.40	0.88	BG00014989
14. O-ring bit retainer ring			In seal kit
15. Driver sub hard faced	5.50	12.1	BG00068435
Optional			
Air screen	0.14	0.31	BG00014867
Air screen circlip	0.01	0.02	BG00014862
Choke set, blank, 3mm, 4.5mm and 6mm	0.01	0.02	BG00015430
Check valve dart with choke hole	0.40	0.88	BG00014985
Seal Kit			
1 piece of #6, #14 & 2 of #11	0.01	0.02	BG00015014
Rebuild Kit			
1 piece of #1, #9, #15 & seal kit			
3 1/2" API reg pin	51.0	112	BG00081817
#24 Cubex pin	49.0	108	BG00166783

RH460hp

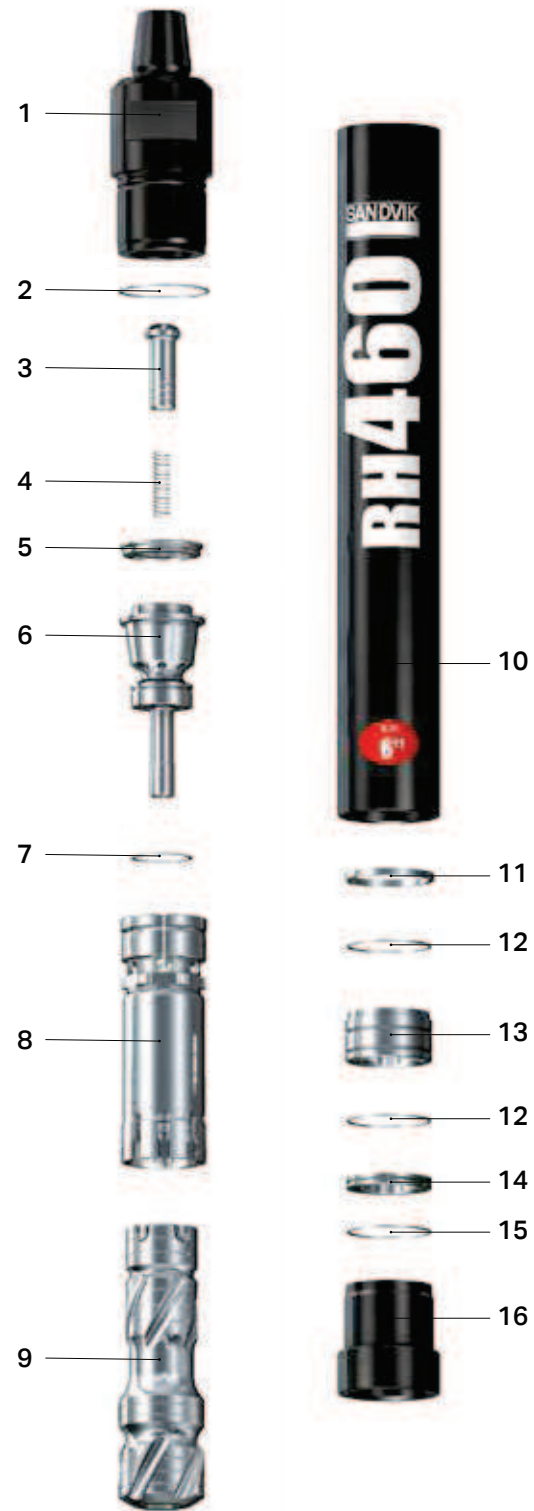
5"



Replacement parts Item description	Weight		Part No.
	kg	lb	
1. Top sub			
3 1/2" API reg pin	15.5	34.1	BG00068455
2. Check valve dart no choke	0.45	0.99	BG00319921
3. Check valve spring	0.03	0.07	BG00014972
4. Make up ring	0.2	0.44	BG00014994
5. Air distributor with O-ring	3.6	7.92	BG00093776
6. O-ring air distributor			In seal kit
7. Inner cylinder	4.2	9.24	BG00025161
8. Piston	14.3	31.5	BG00062889
9. Piston case with retainer ring	30	66	BG00068439
10. Piston retainer ring	0.1	0.22	BG00014998
11. O-ring guide sleeve			In seal kit
12. Guide sleeve with O-ring	1	2.2	BG00014988
13. Bit retainer ring with O-ring	0.4	0.88	BG00014989
14. O-ring bit retainer ring			In seal kit
15. Driver sub hard faced	5.5	12.1	BG00068435
Optional			
Air screen	0.14	0.31	BG00014867
Air screen circlip	0.01	0.02	BG00014862
Choke set, blank, 3mm, 4.5mm and 6mm	0.01	0.02	BG00015430
Check valve dart with choke hole	0.4	0.88	BG00014985
Seal Kit			
1 piece of #6, #14 & 2 of #11	0.01	0.02	BG00015014
Rebuild Kit			
1 piece of #1, #9, #15 & seal kit			
3 1/2" API reg pin	51	112	BG00081817

RH460

6"



Replacement parts	Item description	Weight		Part No.
		kg	lb	
1.	Top sub			
3	1/2" API reg pin	24	52.8	BG00014888
2.	O-ring top sub			In seal kit
3.	Check valve dart no choke	0.7	1.54	BG00321398
4.	Check valve spring	0.1	0.22	BG00014864
5.	Make up ring	0.4	0.88	BG00014865
6.	Air distributor with O-ring	6.2	13.6	BG00054361
7.	O-ring air distributor			In seal kit
8.	Inner cylinder	6.4	14.1	BG00123002
9.	Piston	21.4	47.1	BG00243084
10.	Piston case with retainer ring	32.4	71.3	BG00054318
11.	Piston retainer ring	0.1	0.22	BG00055711
12.	O-ring guide sleeve			In seal kit
13.	Guide sleeve with O-ring	2.3	5.06	BG00055719
14.	Bit retainer ring with O-ring	0.6	1.32	BG00014871
15.	O-ring bit retainer ring			In seal kit
16.	Driver sub	6.5	14.3	BG00014887
Optional				
	Air screen	0.1	0.22	BG00014867
	Air screen circlip	0.01	0.02	BG00014862
	Choke set, blank, 3mm, 4.5mm and 6mm	0.01	0.02	BG00081800
	Check valve dart with choke hole	0.7	1.54	BG00014869
	Driver sub hard faced	6.50	14.3	BG00242302
Seal Kit				
	1 Piece of #2, #7, #15 & 2 of #12	0.01	0.02	BG00014894
Rebuild Kit				
	1 piece of #1, #10, #16 & seal kit			
	3 1/2" API reg pin	63.0	139	BG00240392

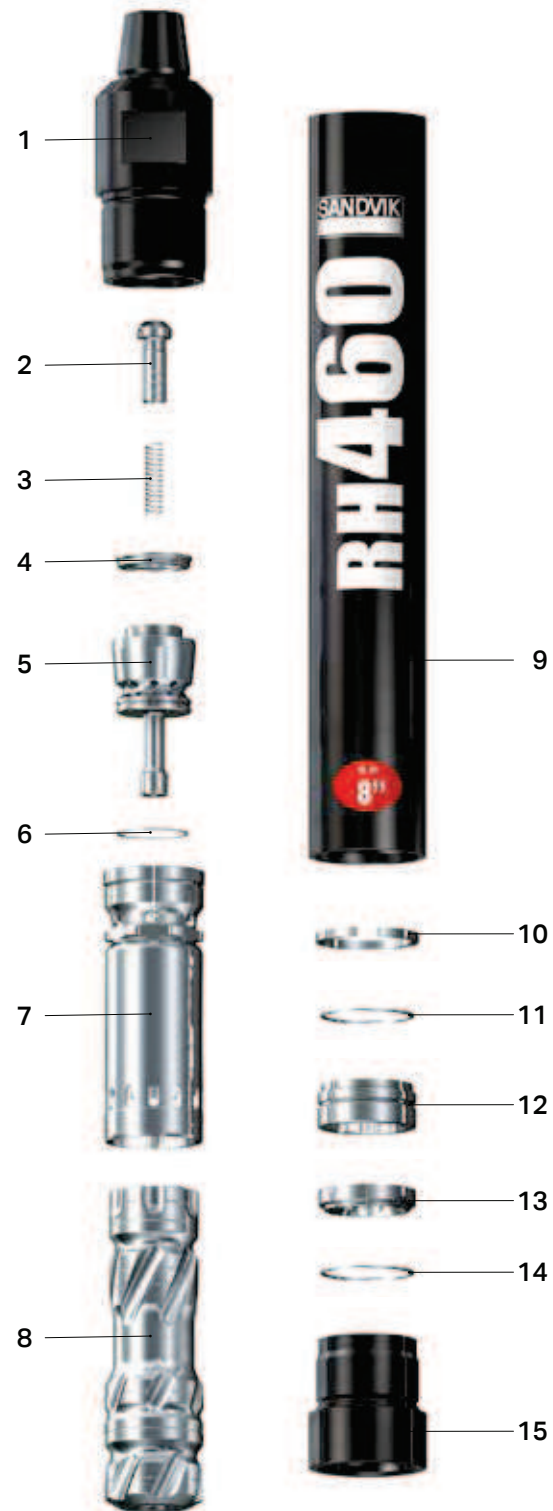
RH460g

6"



Replacement parts	Item description	Weight		Part No.
		kg	lb	
1.	Top sub			
3	1/2" API reg pin	25.4	55.9	BG00224812
	#28 Cubex pin	26	57.2	BG00237751
2.	O-ring top sub			In seal kit
3.	Check valve dart no choke	0.7	1.54	BG00321398
4.	Check valve spring	0.03	0.07	BG00014864
5.	Make up ring	0.4	0.88	BG00014865
6.	Air distributor with O-ring	6.2	13.6	BG00054361
7.	O-ring air distributor			In seal kit
8.	Inner cylinder	6.4	14.1	BG00123002
9.	Piston	21.4	47.1	BG00243084
10.	Piston case with retainer ring	46.4	102	BG00224808
11.	Piston retainer ring	0.1	0.22	BG00055711
12.	O-ring guide sleeve			In seal kit
13.	Guide sleeve with O-ring	2.3	5.06	BG00055719
14.	Bit retainer ring with O-ring	0.6	1.32	BG00014871
15.	O-ring bit retainer ring			In seal kit
16.	Driver sub	7.2	15.8	BG00224798
Optional				
	Air screen	0.1	0.22	BG00014867
	Air screen circlip	0.01	0.02	BG00014862
	Choke set, blank, 3mm, 4.5mm and 6mm	0.01	0.02	BG00081800
	Check valve dart with choke hole	0.7	1.54	BG00014869
Seal Kit				
	1 Piece of #2, #7, #15 & 2 of #12	0.01	0.02	BG00014894
Rebuild Kit				
	1 piece of #1, #10, #16 & seal kit			
	3 1/2" API reg pin	79	174	BG00240400
	#28 Cubex pin	80	176	BG00240135

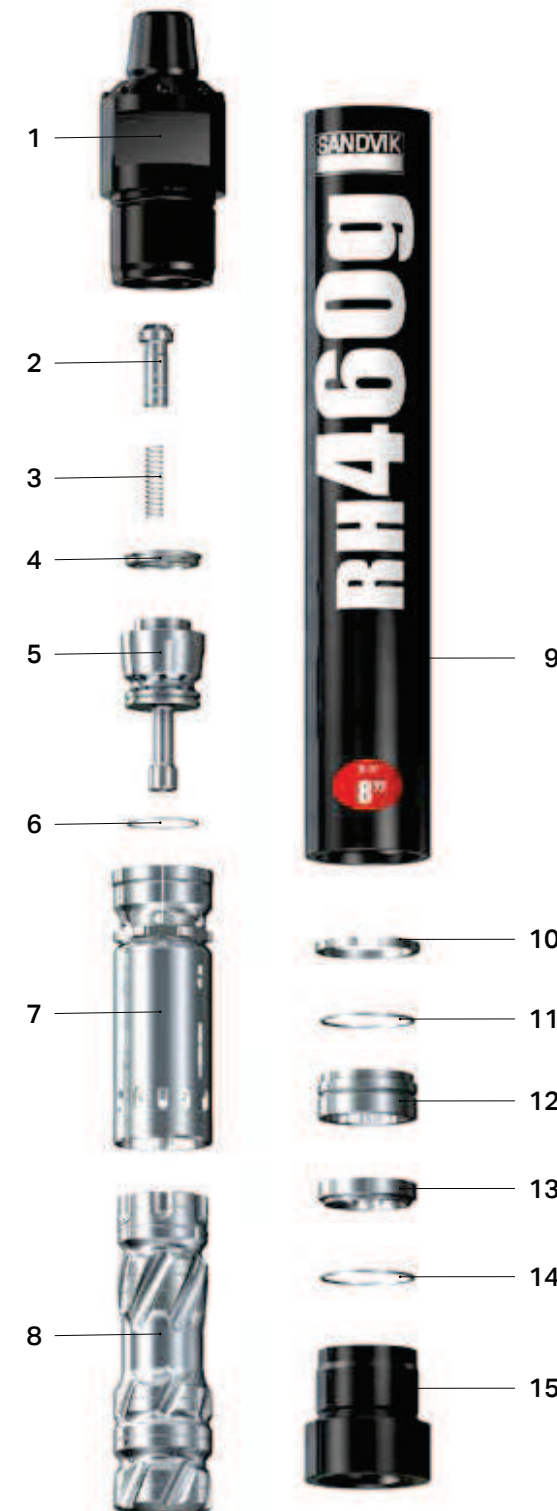
RH460



Replacement parts	Item description	Weight		Part No.
		kg	lb	
1.	Top sub			
4	1/2" API reg pin	55	121	BG00096730
2.	Check valve dart no choke	0.80	1.76	BG00321984
3.	Check valve spring	0.04	0.09	BG00015376
4.	Make up ring	0.4	0.88	BG00015380
5.	Air distributor with O-ring	9.4	20.7	BG00078615
6.	O-ring air distributor			In seal kit
7.	Inner cylinder	10.5	23.1	BG00057803
8.	Piston	50	110	BG00277131
9.	Piston case with retainer ring	64	141	BG00057909
10.	Piston retainer ring	0.2	0.44	BG00096748
11.	O-ring guide sleeve			In seal kit
12.	Guide sleeve with O-ring	3	6.6	BG00096749
13.	Bit retainer ring with O-ring	1.4	3.08	BG00096752
14.	O-ring bit retainer ring			In seal kit
15.	Driver sub	13.6	29.9	BG00096753
Optional				
	Air screen	0.2	0.44	BG00303642
	Air screen circlip	0.01	0.02	BG00303733
	Choke set, blank, 3mm, 4.5mm and 6mm	0.01	0.02	BG00081800
	Check valve dart with choke hole	0.8	1.76	BG00015375
	Driver sub hard faced	13.6	29.9	BG00367978
Seal Kit				
	1 piece of #6, #11 & #14	0.01	0.02	BG00303706
Rebuild Kit				
	1 piece of #1, #9, #15 & seal kit			
	4 1/2" API reg pin	134	295	BG00305733

8"

RH460g



Replacement parts	Item description	Weight		Part No.
		kg	lb	
1.	Top sub			
4	1/2" API reg pin	57.0	125	BG00365764
4	1/2 BECO pin	57.0	125	BG00278298
2.	Check valve dart no choke	0.80	1.76	BG00321984
3.	Check valve spring	0.04	0.09	BG00015376
4.	Make up ring	0.40	0.88	BG00015380
5.	Air distributor with O-ring	9.40	20.7	BG00078615
6.	O-ring air distributor			In seal kit
7.	Inner cylinder	10.5	23.1	BG00057803
8.	Piston	50.0	110	BG00277131
9.	Piston case with retainer ring	94.2	207	BG00278268
10.	Piston retainer ring	0.20	0.44	BG00096748
11.	O-ring guide Sleeve			In seal kit
12.	Guide sleeve with O-ring	3.00	6.60	BG00096749
13.	Bit retainer ring with O-ring	1.40	3.08	BG00096752
14.	O-ring bit retainer ring			In seal kit
15.	Driver sub hard faced	15.9	35.0	BG00303677
Optional				
	Air screen	0.20	0.44	BG00303642
	Air screen circlip	0.01	0.02	BG00303733
	Choke set, blank, 3mm, 4.5mm and 6mm	0.01	0.02	BG00081800
	Check valve dart with choke hole	0.80	1.76	BG00015375
Seal Kit				
	1 piece of #6, #11 & #14	0.01	0.02	BG00303706
Rebuild Kit				
	1 piece of #1, #9, #15 & seal kit			
	4 1/2" API reg pin	168	370	BG00367721
	4 1/2 BECO pin	167	367	BG00305742

8"

RH350 10" SD



Replacement parts	Item description	Part No.
Complete Hammer		
	6 5/8 API Reg Pin	32-3510-SSA/39S
Bit shank		
	SD10	



Weight		Outside diameter		Hammer length		Hammer length with bit			
kg	lb	mm	inch	mm	inch	Bit closed		Bit extended	
						mm	inch	mm	inch
360	795	226	8,9	1480	58,3	1640	64,6	1690	66,5
Air consumption, cfm				Air consumption, m3/min					
150 psi	200 psi	250 psi	300 psi	10 bar	14 bar	17 bar	21 bar		
690	980	1290	1610	19,5	27,8	36,5	45,6		

RH350 15" SD



Replacement parts	Item description	Part No.
Complete Hammer		
	7 5/8 API Reg Pin	32-3515-SSA/15S
Bit shank		
	SD15	



Weight		Outside diameter		Hammer length		Hammer length with bit			
kg	lb	mm	inch	mm	inch	Bit closed		Bit extended	
						mm	inch	mm	inch
1100	2420	360	14,2	1904	75	2160	85	2210	87
Air consumption, cfm				Air consumption, m3/min					
150 psi	200 psi	250 psi	300 psi	10 bar	14 bar	17 bar	21 bar		
1650	2090	2680		46,7	59,2	75,9			

RH350 12" SD



Replacement parts	Item description	Part No.
Complete Hammer		
	6 5/8 API Reg Pin	32-3512-SSA/39S
Bit shank		
	SD12	



Weight		Outside diameter		Hammer length		Hammer length with bit			
kg	lb	mm	inch	mm	inch	Bit closed		Bit extended	
						mm	inch	mm	inch
618	1360	275	10,8	1729	68,1	1984	78,1	2034	80,1
Air consumption, cfm				Air consumption, m3/min					
150 psi	200 psi	250 psi	300 psi	10 bar	14 bar	17 bar	21 bar		
880	1250	1700		19,5	35,4	48,1			

RH350 18" SD



Replacement parts	Item description	Part No.
Complete Hammer		
	8 5/8 API Reg Pin	32-3518-SSA/69S
Bit shank		
	SD18	



Weight		Outside diameter		Hammer length		Hammer length with bit			
kg	lb	mm	inch	mm	inch	Bit closed		Bit extended	
						mm	inch	mm	inch
1560	3430	410	16,1	2040	80,3	2290	90,3	2340	92,3
Air consumption, cfm				Air consumption, m3/min					
100 psi	150 psi	200 psi	300 psi	7 bar	10 bar	14 bar	21 bar		
1430	2120	3000		40,5	60,0	84,9			

RH350 12" DHD



Replacement parts	Item description	Part No.
Complete Hammer		
	6 5/8 API Reg Pin	32-3512-SDA/39S
Bit shank		
	DHD 112	



Weight		Outside diameter		Hammer length		Hammer length with bit			
kg	lb	mm	inch	mm	inch	Bit closed		Bit extended	
						mm	inch	mm	inch
620	1365	275	10,8	1750	68,9	2004	78,9	2054	80,9
Air consumption, cfm				Air consumption, m3/min					
150 psi	200 psi	250 psi	300 psi	10 bar	14 bar	17 bar	21 bar		
880	1250	1700		24,9	35,4	48,1			

RH350 18" Numa

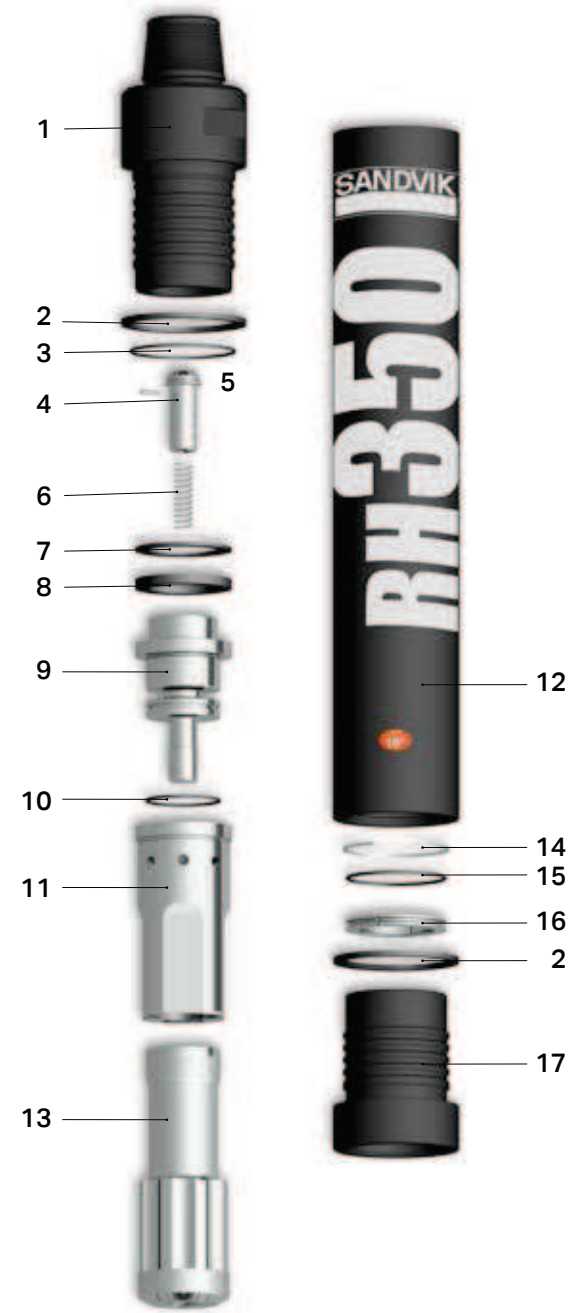


Replacement parts	Item description	Part No.
Complete Hammer		
	8 5/8 API Reg Pin	32-3518-SNA/69S
Bit shank		
	N180	



Weight		Outside diameter		Hammer length		Hammer length with bit			
kg	lb	mm	inch	mm	inch	Bit closed		Bit extended	
						mm	inch	mm	inch
1574	3460	410	16,1	1993	78,5	2248	88,5	2298	90,5
Air consumption, cfm				Air consumption, m3/min					
100 psi	150 psi	200 psi	300 psi	7 bar	10 bar	14 bar	21 bar		
1430	2120	3000		40,5	60,0	84,9			

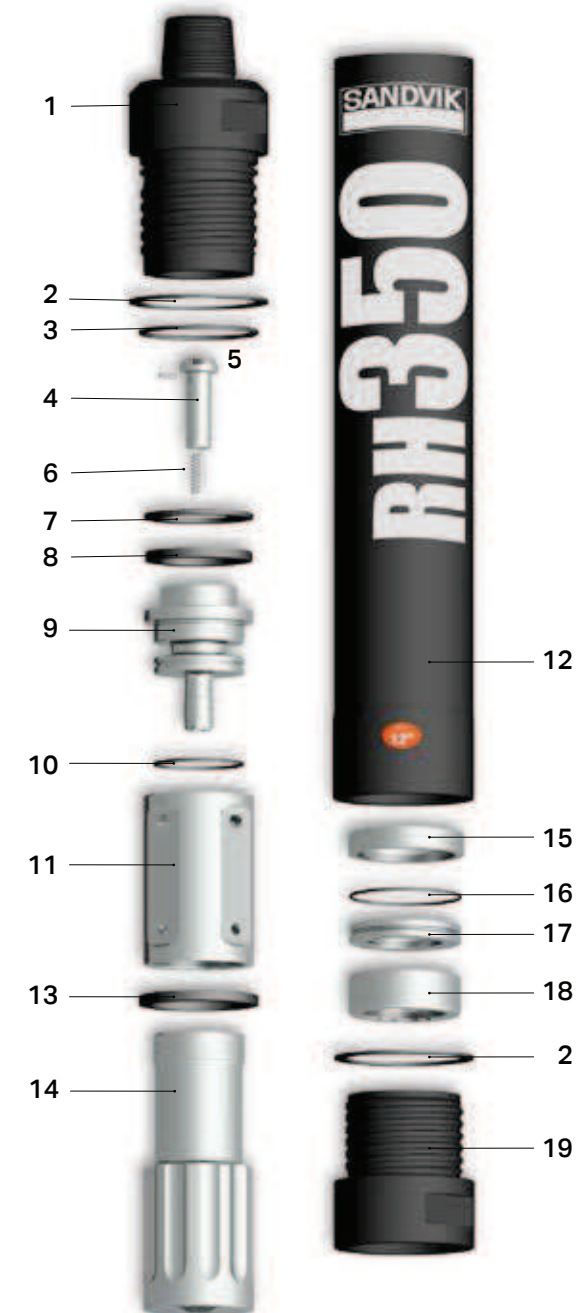
RH350



Replacement parts	Item description	Weight		Part No.
		kg	lb	
1.	Top Sub 6 5/8 API Reg Pin			BG00029652
2.	Break Out Ring			BG00029666
3.	O-Ring, Top Sub			In Seal Kit
4.	Check Valve			BG00029667
5.	Choke, blank			BG00047875
5.	Choke, 1/4"			BG00047876
5.	Choke, 3/8"			BG00047877
5.	Choke, 1/2"			BG00047878
6.	Check Valve Spring			BG00029670
7.	Spacer			BG00029668
8.	Make Up Ring			BG00029669
9.	Rigid Valve			BG00029671
10.	O-Ring, Rigid Valve			In Seal Kit
11.	Inner Sleeve			BG00029672
12.	Piston Case			BG00029673
13.	Piston			BG00029674
14.	Piston Retainer Ring			BG00029675
15.	O-Ring, Bit Retainer Ring			In Seal Kit
16.	Bit Retainer Ring			BG00029676
17.	Driver Sub			BG00029677
Seal Kit				
1 of 3, 1 of 10, 3 of 15				BG00032790

10" SD

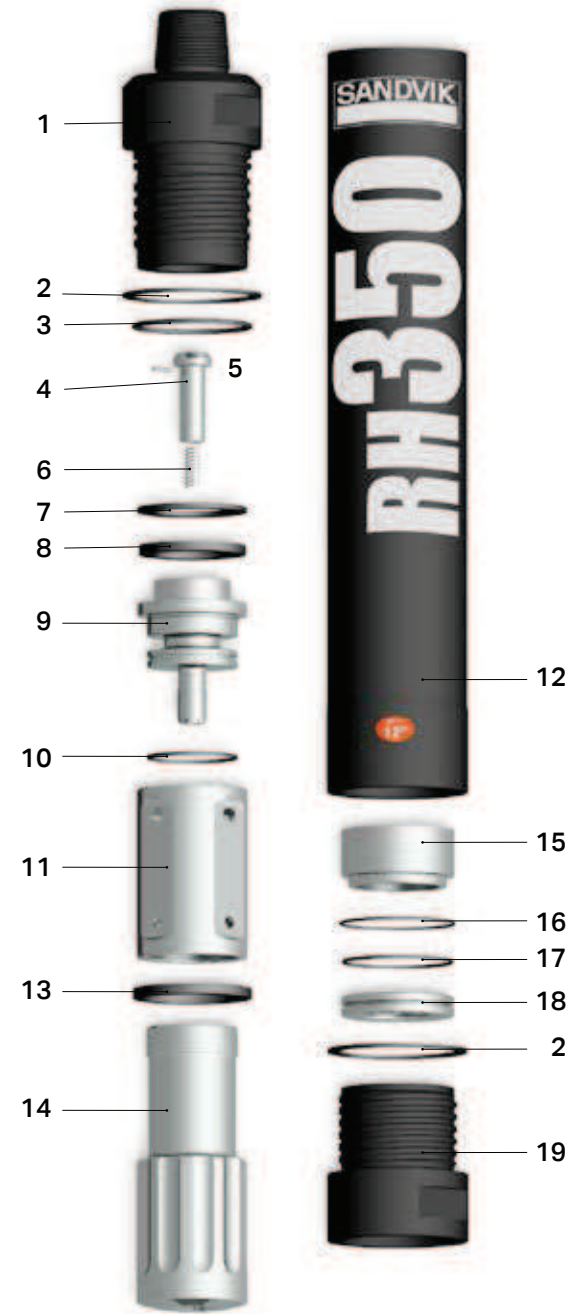
RH350



Replacement parts	Item description	Weight		Part No.
		kg	lb	
1.	Top Sub 6 5/8 API Reg Pin			BG00031105
2.	Break Out Ring			BG00031108
3.	O-Ring, Top Sub			In Seal Kit
4.	Check Valve			BG00031109
5.	Choke, blank			BG00047947
5.	Choke, 1/4"			BG00047949
5.	Choke, 3/8"			BG00047950
5.	Choke, 1/2"			BG00047951
6.	Check Valve Spring			BG00054450
7.	Spacer			BG00031110
8.	Make Up Ring			BG00031111
9.	Rigid Valve			BG00031112
10.	O-Ring, Rigid Valve			In Seal Kit
11.	Inner Sleeve			BG00031113
12.	Piston Case			BG00054500
13.	Stop Ring			BG00031114
14.	Piston			BG00054499
15.	Piston Retainer Ring			BG00031117
16.	O-Ring, Bit Retainer Ring			In Seal Kit
17.	Bit Retainer Ring			BG00031118
18.	Guide Sleeve			BG00031121
19.	Driver Sub			BG00031122
Seal Kit				
1 piece of 3, 1 of 10, 3 of 16				BG00032791

12" SD

RH350



Replacement parts	Item description	Weight		Part No.
		kg	lb	
1.	Top Sub 6 5/8 API Reg Pin			BG00031105
2.	Break Out Ring			BG00031108
3.	O-Ring, Top Sub			In Seal Kit
4.	Check Valve			BG00031109
5.	Choke, blank			BG00047947
5.	Choke, 1/4"			BG00047949
5.	Choke, 3/8"			BG00047950
5.	Choke, 1/2"			BG00047951
6.	Check Valve Spring			BG00054450
7.	Spacer			BG00031110
8.	Make Up Ring			BG00031111
9.	Rigid Valve			BG00031112
10.	O-Ring, Rigid Valve			In Seal Kit
11.	Inner Sleeve			BG00031113
12.	Piston Case			BG00031116
13.	Stop Ring			BG00031114
14.	Piston			BG00031115
15.	Bushing			BG00031403
16.	Bushing Stop Ring			BG00031404
17.	O-Ring, Bit Retainer Ring			In Seal Kit
18.	Bit Retainer Ring			BG00031405
19.	Driver Sub			BG00031406
Seal Kit				
1 piece of 3, 1 of 10, 3 of 17				BG00032791

12" DHD

RH350



Replacement parts	Item description	Weight		Part No.
		kg	lb	
1.	Top Sub 7 5/8 API Reg Pin			BG00032389
2.	Break Out Ring			BG00032528
3.	O-Ring, Top Sub			In Seal Kit
4.	Check Valve			BG00032529
5.	Choke, blank			BG00047952
5.	Choke, 1/4"			BG00047953
5.	Choke, 3/8"			BG00047954
5.	Choke, 1/2"			BG00047957
6.	Check Valve Spring			BG00032533
7.	Spacer			BG00032530
8.	Make Up Ring			BG00032531
9.	Rigid Valve			BG00032536
10.	O-Ring, Rigid Valve			In Seal Kit
11.	Inner Sleeve			BG00032540
12.	Piston Case			BG00032543
13.	Piston			BG00032546
14.	Bushing			BG00032547
15.	Piston Retainer Ring			BG00032548
16.	O-Ring, Bit Retainer Ring			In Seal Kit
17.	Bit Retainer Ring			BG00032551
18.	Guide Sleeve			BG00032552
19.	Driver Sub			BG00032553
Seal Kit				
1 piece of 3, 1 of 10, 3 of 16				BG00032792

15" SD

RH350

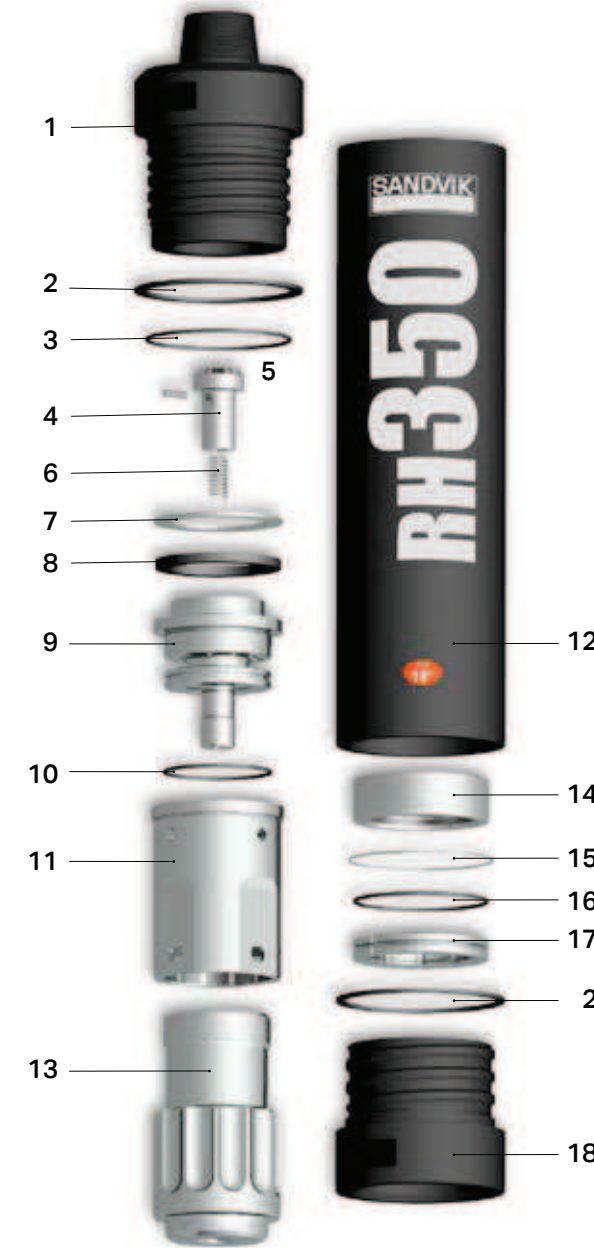
18" SD



Replacement parts	Item description	Weight		Part No.
		kg	lb	
1.	Top Sub 8 5/8 API Reg Pin			BG00032612
2.	Break Out Ring, Upper			BG00032613
3.	O-Ring, Top Sub			In Seal Kit
4.	Check Valve			BG00032614
5.	Choke, blank			BG00047958
5.	Choke, 1/4"			BG00047959
5.	Choke, 3/8"			BG00047960
5.	Choke, 1/2"			BG00047961
6.	Check Valve Spring			BG00032615
7.	Spacer			BG00032616
8.	Make Up Ring			BG00032617
9.	Rigid Valve			BG00032618
10.	O-Ring, Rigid Valve			In Seal Kit
11.	Inner Sleeve			BG00032619
12.	Piston Case			BG00032620
13.	Piston			BG00032621
14.	Bushing			BG00032622
15.	Piston Retainer Ring			BG00032623
16.	O-Ring, Bit Retainer Ring			In Seal Kit
17.	Bit Retainer Ring			BG00032624
18.	Guide Sleeve			BG00032625
19.	Break Out Ring, Lower			BG00032626
20.	Driver Sub			BG00032627
Seal Kit				
1 piece of 3, 1 of 10, 3 of 16				BG00032793

RH350

18" Numa



Replacement parts	Item description	Weight		Part No.
		kg	lb	
1.	Top Sub 8 5/8 API Reg Pin			BG00032612
2.	Break Out Ring			BG00032613
3.	O-Ring, Top Sub			In Seal Kit
4.	Check Valve			BG00032614
5.	Choke, blank			BG00047958
5.	Choke, 1/4"			BG00047959
5.	Choke, 3/8"			BG00047960
5.	Choke, 1/2"			BG00047961
6.	Check Valve Spring			BG00032615
7.	Spacer			BG00032616
8.	Make Up Ring			BG00032617
9.	Rigid Valve			BG00032618
10.	O-Ring, Rigid Valve			In Seal Kit
11.	Inner Sleeve			BG00032619
12.	Piston Case			BG00032704
13.	Piston			BG00032705
14.	Bushing			BG00032706
15.	Piston Retainer Ring			BG00032623
16.	O-Ring, Bit Retainer Ring			In Seal Kit
17.	Bit Retainer Ring			BG00032707
18.	Driver Sub			BG00032708
Seal Kit				
1 piece of 3, 1 of 10, 3 of 16				BG00032793