

QH331 CONE CRUSHER

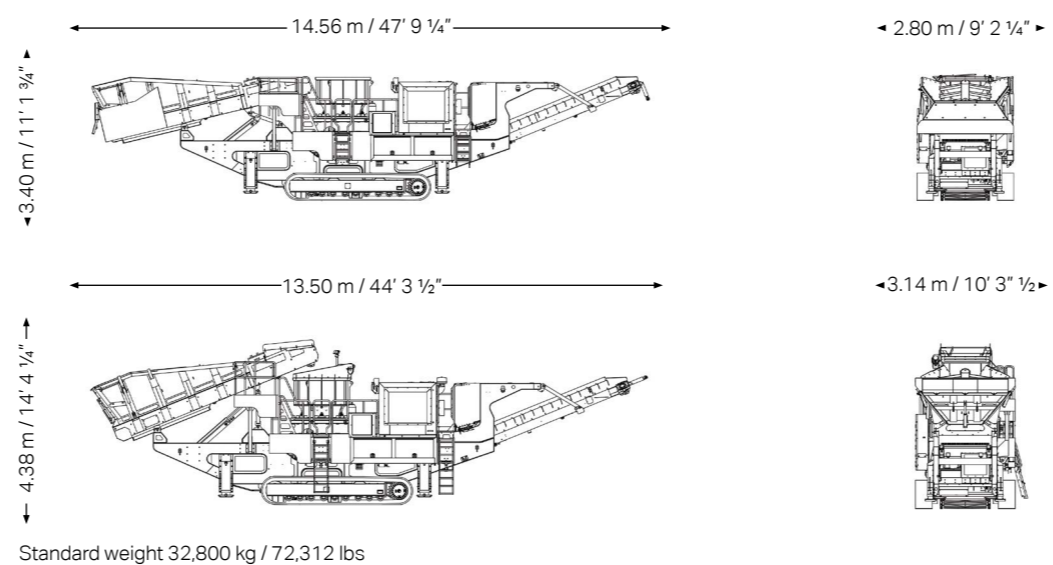
ENGINEERING IN MOTION

TECHNICAL SPECIFICATIONS

KEY SPECIFICATIONS	DATA
Crusher type	Sandvik CH430
Speed	369 rpm to 390 rpm
Feed opening	185 mm / 7 1/4"
CSS range	6 - 41 mm / 1/4" - 1 1/2"
Drive	PT Tech 12" Wet Clutch with PTO
Drive belts	8 SPC Single Belts

KEY SPECIFICATIONS	DATA
Power pack	
Engine type	Stage 3A / Tier 3 CAT C9 Acert or Stage 3B / Tier 4i CAT C9.3 Acert or Stage 4 / Tier 4 Final Cat 9.3 Acert
Engine power	261 kW / 350 hp
Diesel tank size	660 litres / 174 USG
Hydraulic tank size	660 litres / 174 USG

Note. All weights and dimensions are for standard units only

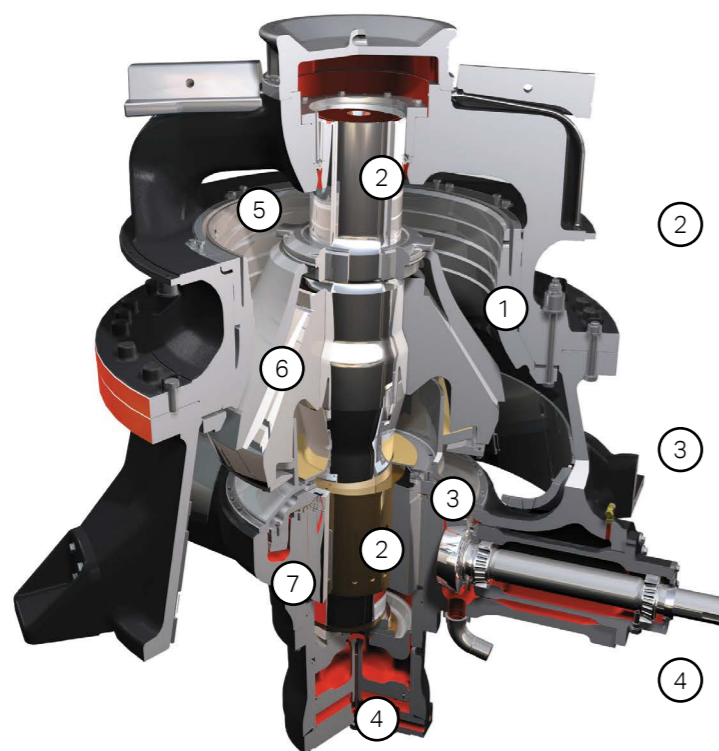


Featuring the proven, high performing Sandvik CH430 Hydrocone. Available with optional hanging screen system.

- 5 - CLP Liners are designed to keep maximum feed size into the cone throughout the wear life of the liners. All liner options fit in one top shell
- Constant liner opening results in constant production performance throughout liner life
- No crusher backing required

- 6 - Longer crushing chamber due to top & bottom support which gives superior product shape in the chamber

- 7 - Bush arrangement has multiple settings to suit the required application
- Eccentric throw can be changed by simply turning the bush. The throw range is the most extensive in the market



- 1 - Modular design with filler ring for ultimate flexibility
- Unique crusher design eliminates the need for anti-spin device on head

- 2 - Main Shaft is supported from both the Top and Bottom giving additional strength

- 3 - Helical drive gear arrangement for maximum durability and smooth, quiet operation

- 4 - Single piston design for gap setting and over load protection. CSS can also be adjusted whilst crushing



QH331 CONE CRUSHER ENGINEERING IN MOTION

KEY SPECIFICATIONS	DATA
Equipment	Sandvik CH430 Hydrocone
Maximum feed size	185 mm / 7 1/4"
Engine	C9 / C9.3 Acert 261 kW / 350 hp
Transport dimensions	14.56 m / 47' 9 1/4" (l) 2.80 m / 9' 2 1/4" (w) 3.40 m / 11' 1 3/4" (h)
Weight	32,800 kg / 72,312 lbs

HIGH QUALITY CONE CRUSHING

The QH331 is aimed at the operator looking for a compact, robust and high quality mobile cone crusher.

It is fitted with the Sandvik CH430 cone crusher, which comes with a choice of six different crushing chambers and various bush settings making it one of the most flexible cone crushers in the market today.

The CH430 cone is equipped with a Hydroset CSS regulation system that optimises production and keeps track of liner wear. The direct drive system provides the QH331 a more efficient use of power and consequently enhances its operational capabilities and lowers fuel consumption.

STANDARD FEATURES INCLUDE:

- Emissions compliant 261 kW / 350 hp engine for powerful cost efficient performance
- Camera overseeing the crushing chamber allows the operator full visibility of the feed material entering the crushing chamber
- A level sensor above the crushing chamber controls the automated variable speed feed conveyor to ensure maximum production, reduction and shape
- Capable of operating in the most hostile environments with a 50°C ambient temperature capability with just a change of lubrication oil
- Designed for optimum fuel economy and low operating costs.

- 2 Feeder**
- Automated variable speed feed conveyor to ensure maximum production, reduction and shape
 - Bridge Coil (up and over) metal detector fitted to the feed conveyor providing optimum stability and controlled detection

- 3 Cone**
- Fitted with the proven CH430 Sandvik Hydrocone for strength and reliability
 - Equipped with Hydroset CSS regulation system for optimum production & protection
 - No crusher backing required behind the liners
 - Various bush settings available to optimize product gradation and capacity
 - Hydraulic over load system for tramp material

- 4 Power pack**
- 261 kW / 350 hp emissions compliant engine
 - Direct drive to ensure maximum power transfer for high production capacity
 - Variable crusher speed via the engine to manipulate product gradation
 - Easy access for service and maintenance
 - Ground level drainage points
 - Large capacity diesel tank 660 litre / 174 USG

- 5 Cooling fan**
- Hydraulically driven cooling fan with auto reverse to back flush dust from radiator

- 1 Hopper**
- Reinforced hydraulically folding hopper
 - Wear resistant liner plates (optional)
 - Hydraulic folding hopper extensions for increased hopper capacity and rear loading (optional)

- 11 Chassis**
- Heavy duty fabricated chassis on a tracked frame

- 10 Tracks**
- 500 mm / 19 3/4" wide tracks driven by umbilical control
 - Radio remote (optional)

- 9 Steel pipework**
- Provides a safe and maintenance-free sealing solution, combined with better heat dissipation

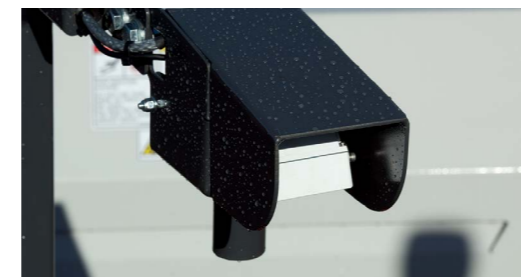
- 8 Control system**
- Highly efficient hydraulic and electric system provide ultimate system control
 - A full colour PLC screen with a simple operator interface combined with a level sensor above the crushing chamber and load control system allows for a fully automated crushing process

- 7 Hanging screen system (optional)**
- 4 x 1.5 m / 13' x 5' single deck screen for recirculation back to feed conveyor, or stockpiling through 90° rotation of oversize conveyor to produce two products
 - Hydraulic operation from recirculating to stockpiling position
 - Extended conveyor fitted as standard with HS option

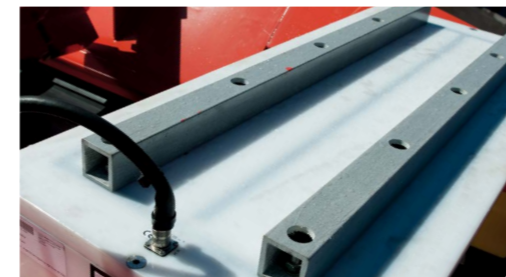
- 6 Main conveyor**
- 1000 mm / 39 1/2" wide main conveyor with a discharge height of 3078 mm / 10' 3/4"
 - Dust suppression spray bars and canvas covers fitted as standard
 - Extended 1.75 m / 5' 8 7/8" conveyor (optional) to increase the discharge height to 3.83 m / 12' 6 3/4"



STANDARD FEATURES



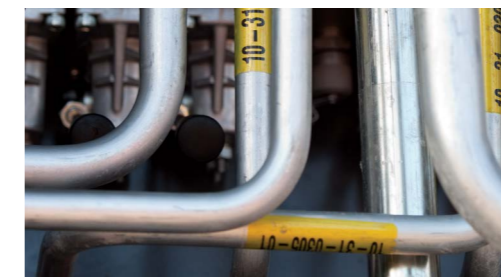
Camera and level sensor to ensure continuous feed



Bridge coil metal detector for controlled detection



Direct drive for maximum fuel efficiency



Steel pipework for better heat dissipation



Easy access to the engine compartment



User friendly PLC control system with colour screen