



SHARK™ GROUND ENGAGING TOOLS  
GET MORE FROM YOUR BUCKET

**SANDVIK**

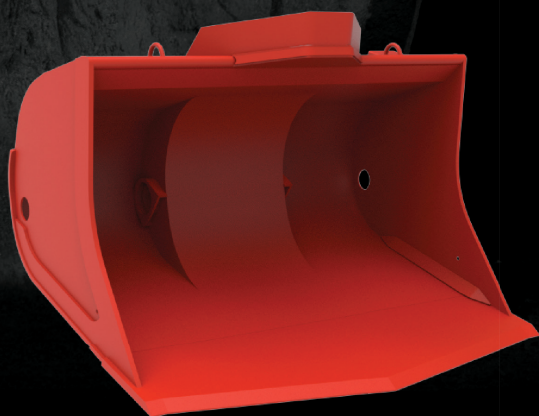
# EXPERIENCE THE SHARK™ DIFFERENCE

Underground loaders play a crucial role in mining production, helping to efficiently move ore for processing. Loader buckets that keep their integrity and last longer have the power to boost productivity – and profitability.

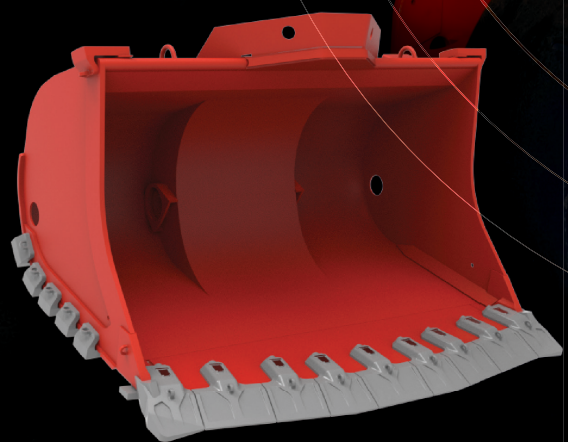
Shark™ ground engaging tools (GET) provide the ultimate protection for your bucket, significantly extending life and reducing costly downtime. Specially designed for abrasive underground environments, the Shark™ range enhances the structural strength of buckets produced by Sandvik and other OEMs, helping you shift more tonnes per hour.

The Shark™ GET range features a variety of solutions to meet your operational and change-out needs. Mako™ and the Blue Pointer™ 2 range provide the ease of mechanical attachment, while the Half Arrow range offers the simplicity and strength of a weld-on solution. Explore the benefits of the complete Shark™ range.

- Mako™
- Blue Pointer™ 2
- Half Arrow
- Weld-on and Mechanical Heel Shrouds
- Plate Profile Bars and Cast Profile Bars



Bucket without GET



Bucket with SHARK™ GET

# 5 MAJOR BENEFITS FOR YOUR OPERATION

## MORE EFFICIENT MINING

Shark™ ground engaging tools help you boost the productivity of your mine in these key ways.

### EXTEND BUCKET LIFE

Increase the working life of your buckets by up to three times with the ultimate leading-edge lip protection.

### LOWER COSTS

Cut costs by up to 45 percent across the total life of the bucket.

### REDUCE DOWNTIME

Significantly lower maintenance downtime and safely extend change-out intervals.

### BOOST PRODUCTIVITY

Maintain bucket geometry and one-pass loading longer by reducing premature wear that can affect optimal operation.

### OPTIMIZE EFFECTIVENESS

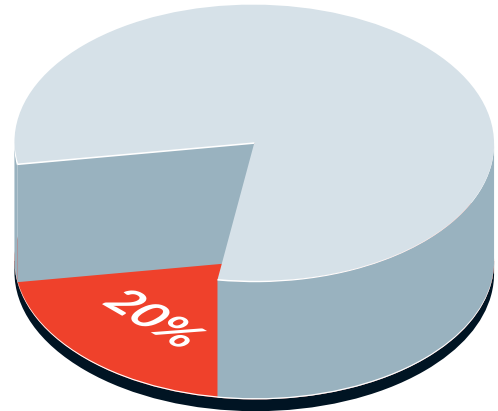
Boost overall effectiveness. Worn buckets aren't just less efficient, they have a harmful impact on drive train components, fuel consumption and overall wear.

# WORN BUCKETS ARE INEFFICIENT BUCKETS

As the condition of a loader bucket deteriorates, it delivers less and less for your operation.

Typical bucket wear problems include:

- reduced penetration due to wear of leading edge;
- higher fuel usage due to the machine working harder;
- more wear and tear on consumables such as tires, which need to work harder and tend to spin as the machine tries to penetrate the muck pile; and
- reduced loading. The volume of dirt shifted by worn bucket can be 20 percent less per cycle than that moved by a new one.



Hover your phone camera or QR code reader over the code on the left to watch a video on the difference Shark™ can make. Or visit <https://youtu.be/Mb4RCAyFH2M>



---

'A WORN BUCKET CAN REDUCE  
LOAD CAPACITY BY **20 PERCENT**  
PER LIP REBUILD CYCLE.'

# PROVEN RESULTS FROM SHARK™ GET

Shark™ GET has proven its ability to reduce downtime and increase productivity, time and time again in mines across the planet.

A typical customer might be a gold mine that operates a number of LHDs. Without the protection of Shark™ GET, the capacity of loader buckets tends to fall by 20 percent across the maintenance cycle, resulting in 52,000 tonnes of lost production over a year. With Shark™ GET in place bucket capacity drops by just five percent, resulting in **39,100 tonnes in saved production** – and **saving the customer 10.3 million USD** in revenue across the year.

SHARK™ GET IN ACTION  
HOW A TYPICAL CUSTOMER MIGHT BENEFIT FROM THE SHARK™ DIFFERENCE

Ore: **Gold**  
Grade: **5g/tonne**  
Price: **USD1500 /oz**  
Bucket Volume: **10.7m³**  
Fill Factor: **90%**  
Cycle time: **5 minutes**



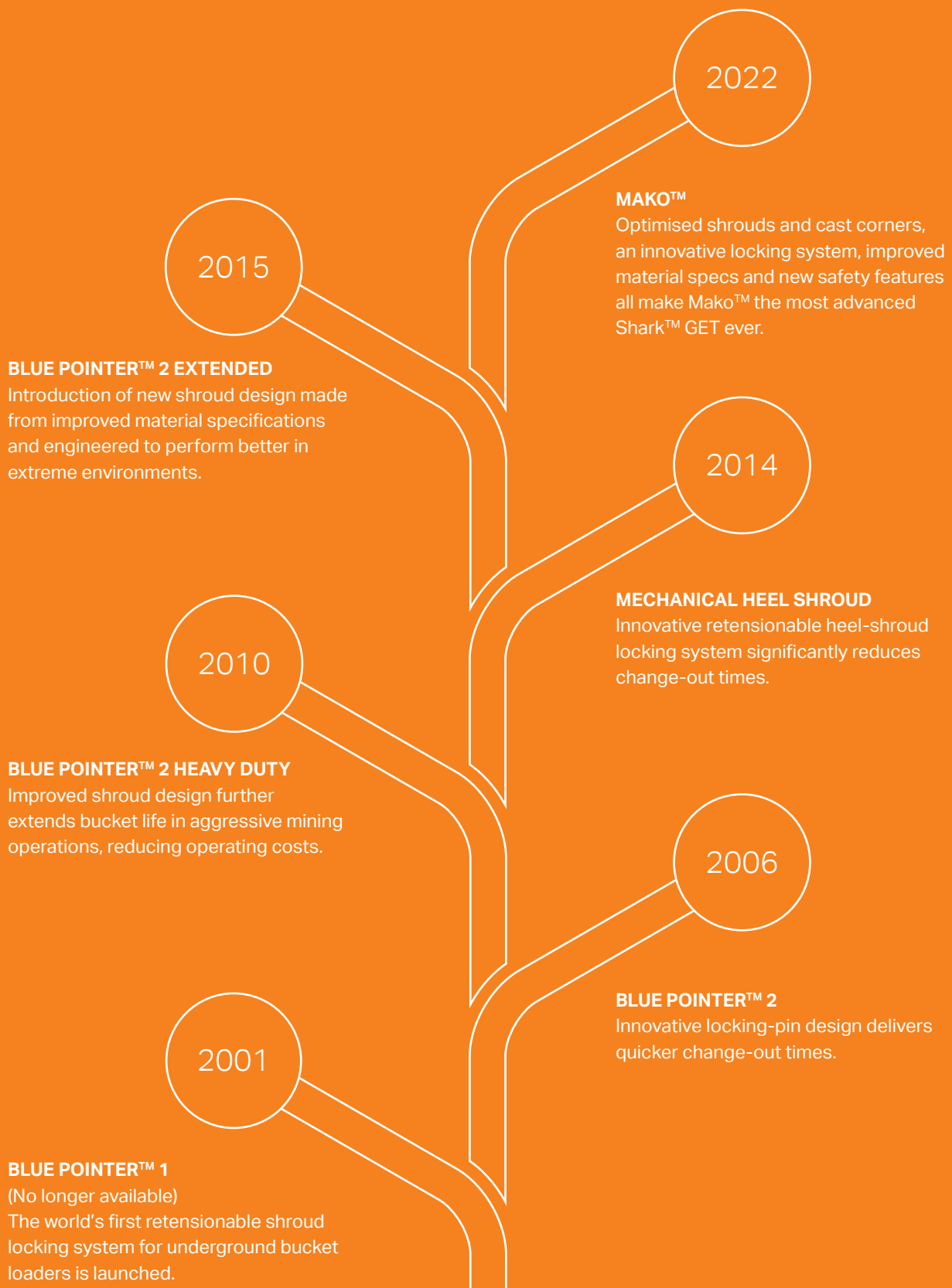
Bucket Type	Capacity Loss/Cycle	Total Production Loss
Unprotected	up to 20%	52,000 tonnes/year
<b>GET protected</b>	<b>5%</b>	<b>12,900 tonnes/year</b>

Bucket Type	Production Saved	Production Savings
<b>GET protected</b>	<b>39,100 tonnes/year</b>	<b>10.3 million USD/year</b>

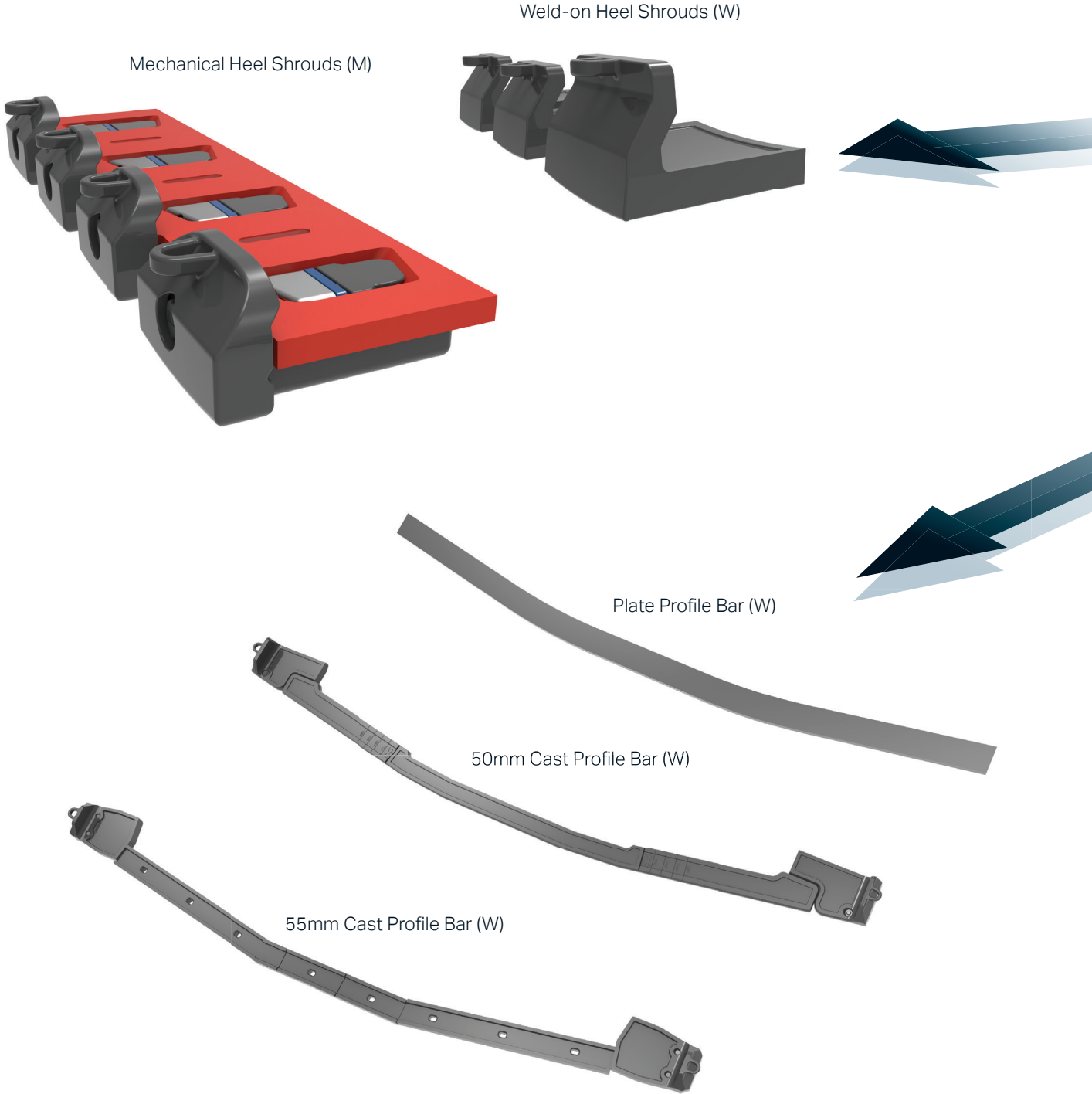
Test results achieved under controlled conditions. Results should not be treated as specifications and Sandvik does not guarantee, warrant or represent the outcome of test results in any or all circumstances.

# HOW SHARK™ HAS EVOLVED



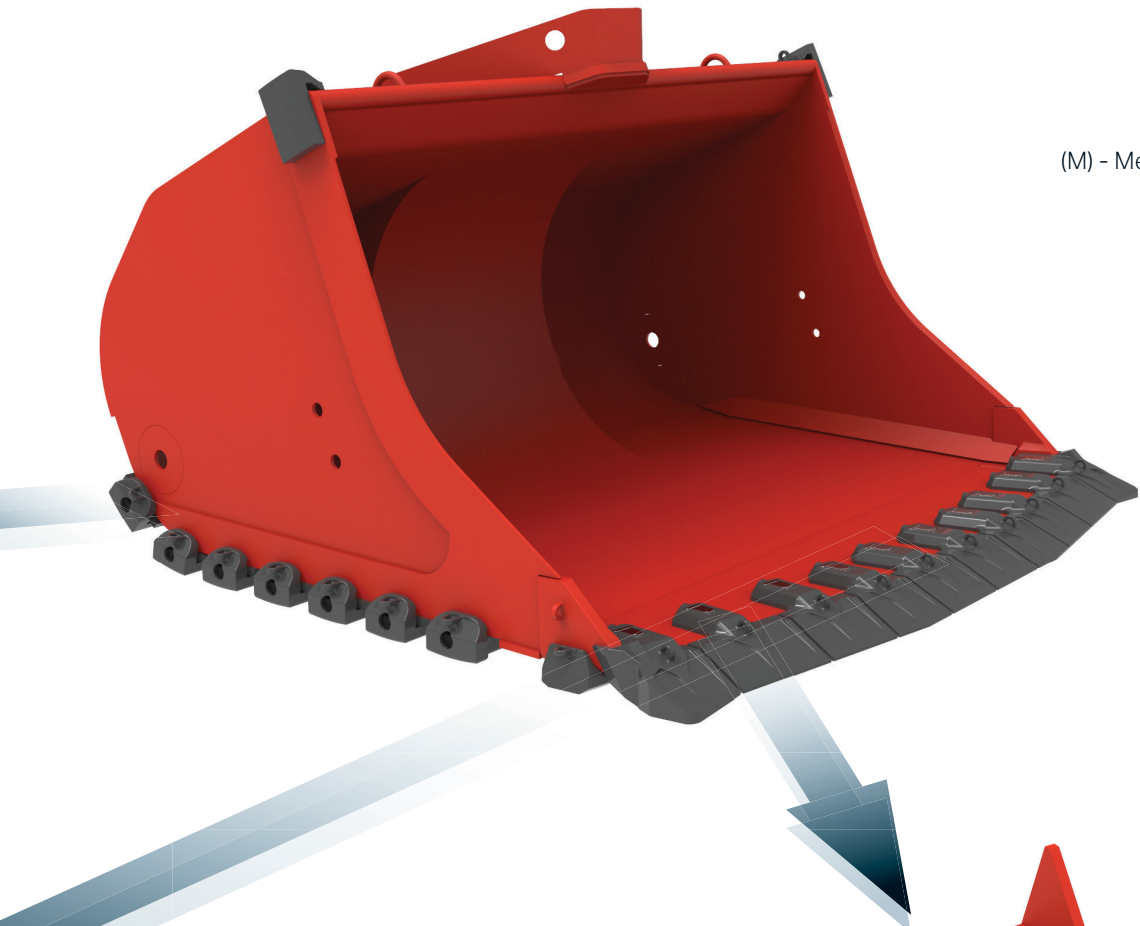
# A SHARK™ SOLUTION FOR EVERY UNDERGROUND OPERATION

## GET TO KNOW THE SHARK™ FAMILY

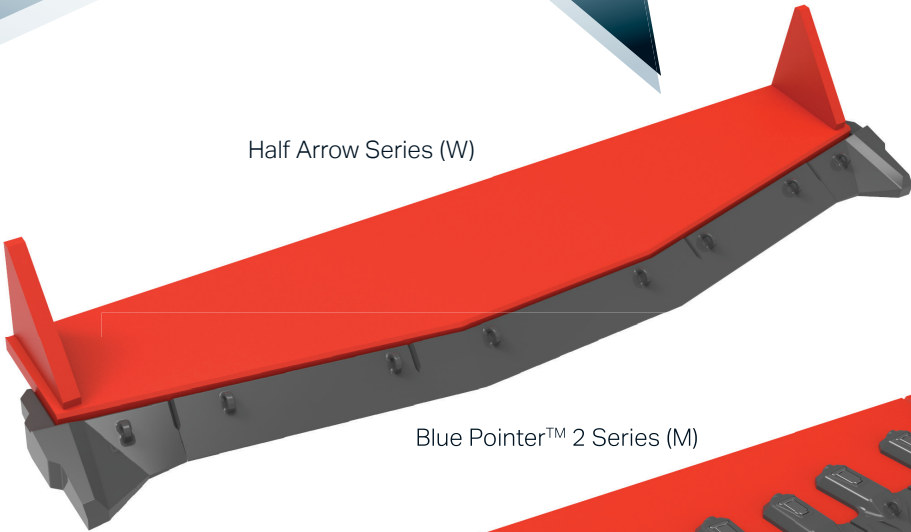




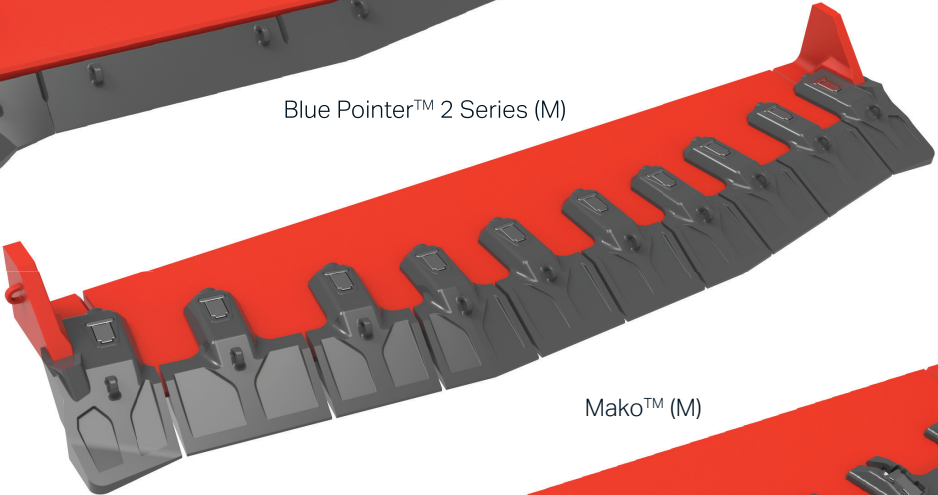
Legend:  
(W) - Weld-on GET  
(M) - Mechanically-attached GET



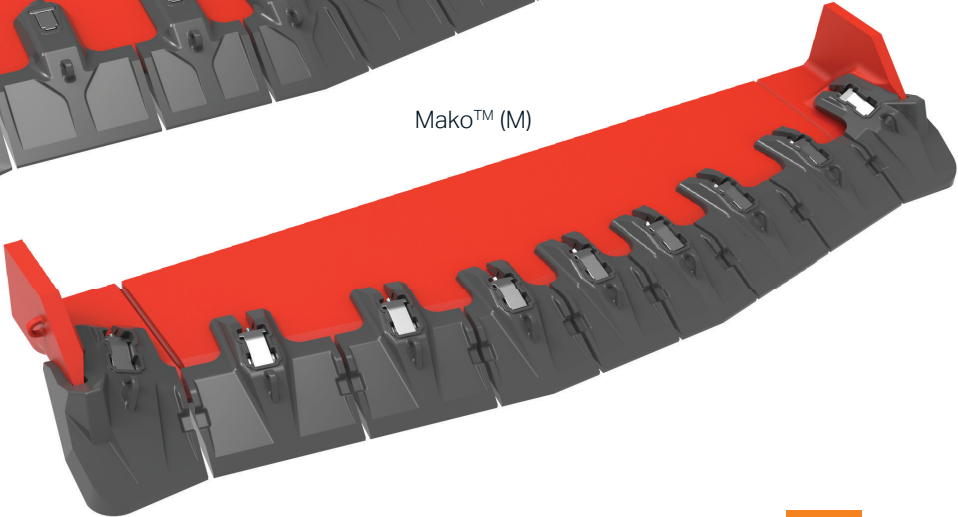
Half Arrow Series (W)



Blue Pointer™ 2 Series (M)



Mako™ (M)



# MAKO™

Large-scale underground mining operations put huge demands on both LHD buckets and GET. Mako™ is a next-generation lip protection system designed specifically for the toughest of mining conditions.

The 50mm Mako™ system's optimised design and tougher materials boost bucket productivity by 40 per cent compared to predecessor GET systems. It delivers a 400-percent longer life than a bare lip.

## CHARACTERISTICS

- Constructed from Sandvik SS5000 steel alloy for increased hardness and added mechanical strength.
- Single cartridge locking-and-removal system.
- Structurally improved cast corners.
- Innovative shroud lifting device for safer workshops.
- Top and bottom wear indicators for ease of inspection.

## ADVANTAGES

- Straight and corner shrouds optimised for 1:1 wear life, eliminating the need for half-life change-outs of corners. (\*)
- 20-per cent lower top leg for enhanced material flow when dumping.
- Optimised design and materials increase wear life by 16 per cent over predecessor.
- Shroud width altered to optimise number required, reducing number of parts.

## BENEFITS

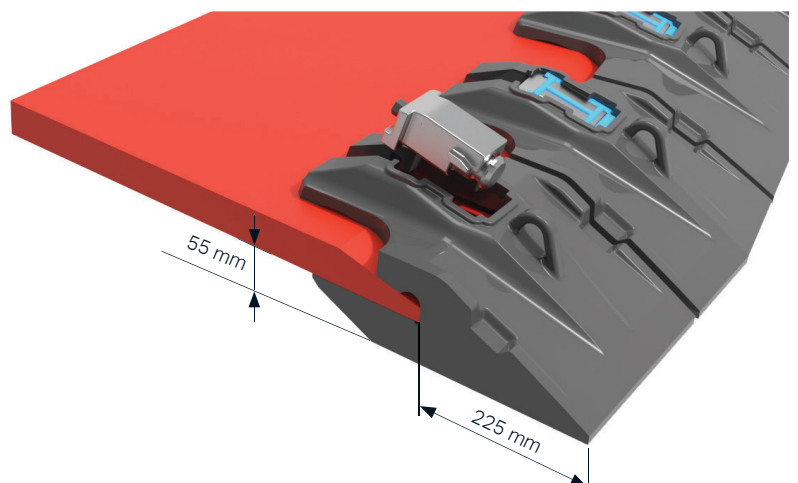
- Even longer bucket service life
- Reduced maintenance frequency
- Improved safety during maintenance
- Reduced frequency of lip rebuilds
- Fewer parts to track
- Increased loader availability



## COMPATIBILITY

Mako 50 mm is suitable for:

- Sandvik: LH621/LH517/LH514
- Caterpillar: R3000/R2900/R1700
- Epiroc: ST14/ST18



(\*) Subject to certain mining applications and conditions

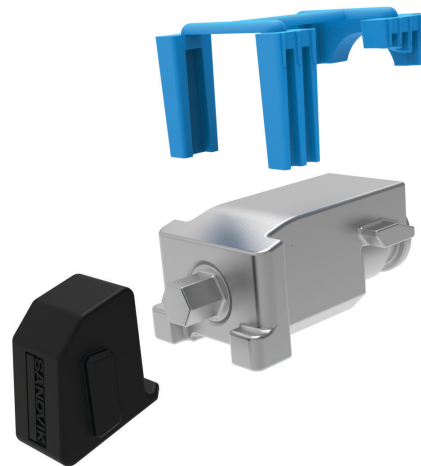
## NEW CORNER SHROUDS DESIGN

When corner and straight shrouds wear at different rates, additional maintenance stops may be required for half-life change-outs of corners. The wear rate for Mako™ corners and straight shrouds has been optimised to close to 1:1, meaning fewer maintenance stops and greater uptime.



## NEW PIN ASSEMBLY

Save time and prevent injuries during change-out with Mako's patented, single-cartridge locking and removal system. Each cartridge is pre-lubricated for simple installation. Enjoy quick and safe hammerless removal using a rattle gun (hex bolt 19mm o 3/4").



## NEW CAST CORNERS

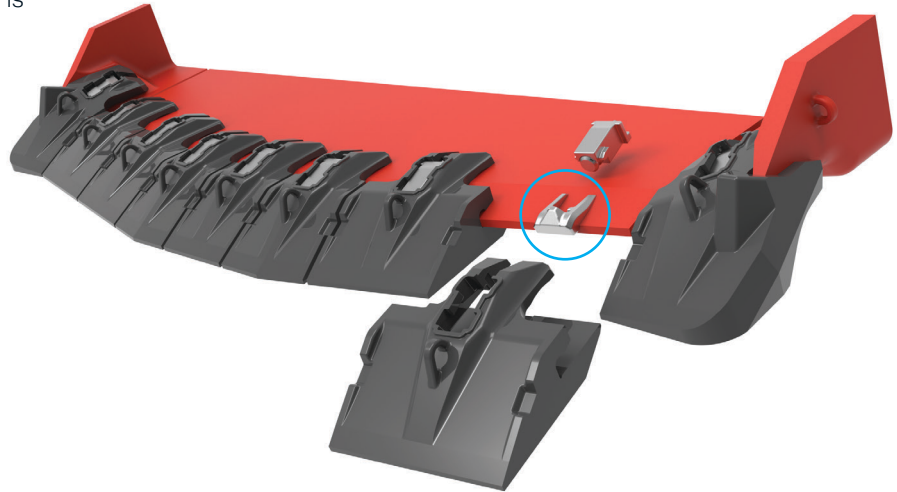
The corner is a high-stress zone on the bucket that faces an elevated risk of fatigue failure. Patented Mako™ cast corners have undergone structural improvements that make them resistant to fatigue, extending the life of the bucket lip.



# MAKO™

## NEW BOSS

Mako™ new weld-on boss system is easy to weld and replace.



## SHROUD LIFTING DEVICE

Shrouds are heavy objects, and worn shrouds in particular can be difficult to move due to the absence of lifting lugs. Mako™ shrouds lifting device, helps make your workshop safer for easy shrouds change-out.



Hover your phone camera or QR code reader over the code on the left to watch a video on the difference Mako™ can make. Or visit <https://youtu.be/g04OHwftvpk>

# BLUE POINTER™ 2

Blue Pointer™ 2 is a range of mechanically attached, quick-change lip protection systems designed to extend the life of loader buckets by preserving the structure of the primary lip.

The range's advanced design allows for good penetration of muck piles and optimization of material flows during dumping. Shrouds in the Blue Pointer™ 2 range are constructed from a Sandvik wear-resistant alloy that delivers a high performance-to-weight ratio.

## CHARACTERISTICS

- Constructed from custom, high-performance Sandvik wear-resistant steel.
- Adjustable locking system.
- Dedicated cast corners provide extra support to high-wearing corner zones.
- Low-profile blades provide increased penetration.
- Built-in wear indicators.

## ADVANTAGES

- Quicker and easier change-out compared to weld-on systems.
- No welding required for change-outs.
- Quicker change-outs than replacing the entire lip.
- Features half corner shrouds to further extend lip life.
- Longer wear-life than weld-on lip systems.

## BENEFITS

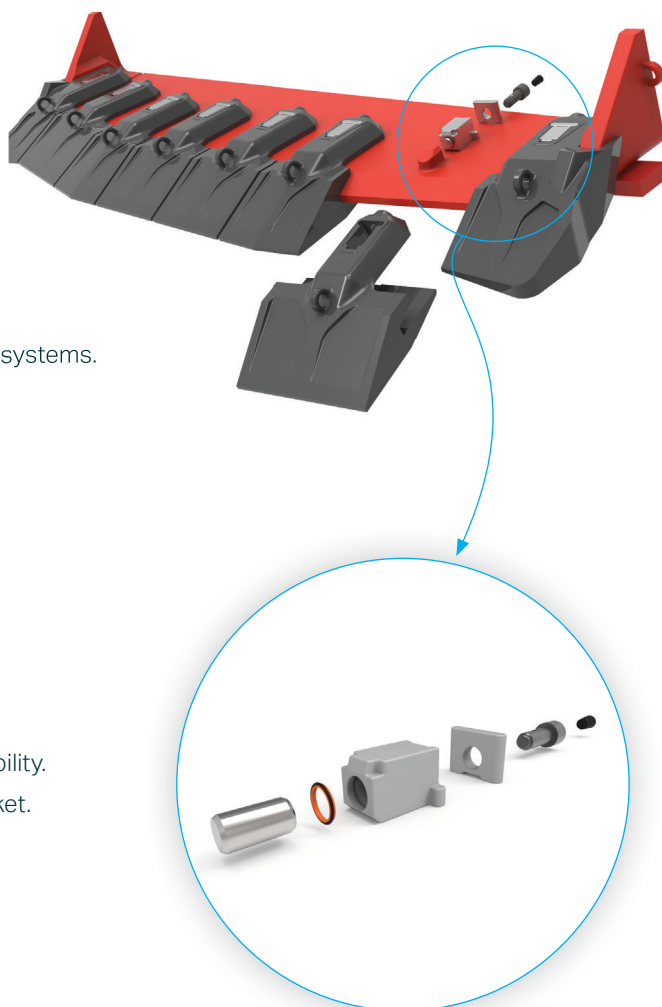
- Extends bucket service life.
- Maintain bucket capacity for longer.
- Reduce the frequency of lip rebuilds.
- Reduce bucket downtimes and increase loader availability.
- Reduce the total cost of ownership of loader and bucket.

## MAINTENANCE

- Customers required to have capacity to maintain the product after installation.

## TYPES

- 32mm Standard
- 50mm Standard
- Heavy Duty
- Extended

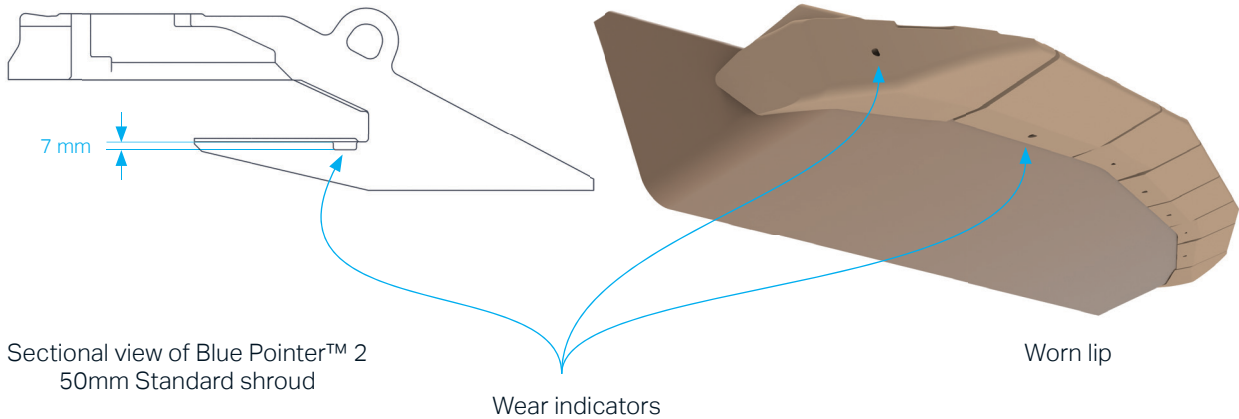


# BLUE POINTER™ 2

## WEAR INDICATORS

Blue Pointer™ Series shrouds feature wear indicators that:

- become visible when there is 7mm of wear material remaining;
- help you to correctly time changeouts to maximize the shrouds life and minimize shroud failures.

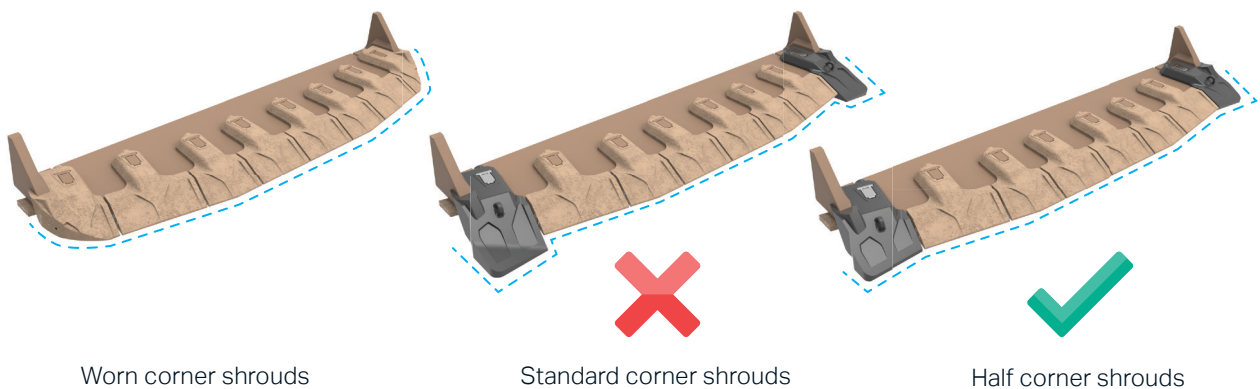


## HALF CORNER SHROUDS

In cases where corner shrouds require replacement before the rest of the GET, fitting standard shrouds can disrupt the continuous cutting edge. This can create a corner that catches, slowing production and damaging road surface conditions through gouging.

Replacing worn corner shrouds with half corner shrouds with a lower profile can maintain the continuous cutting edge, resulting in:

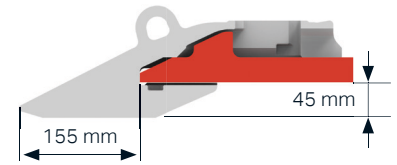
- extended bucket life;
- alignment of wear package;
- lower costs.



# BLUE POINTER™ 2

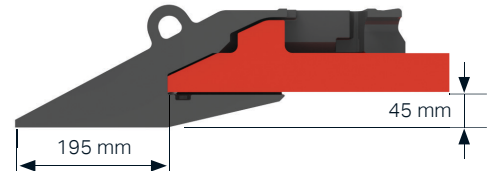
## BLUE POINTER™ 2 – 32MM STANDARD

- Suitable for small to medium-sized loaders operating in normal mining conditions.
- Constructed from highly wear-resistant **Sandvik SS3000 steel alloy**.
- Suits 32mm thick primary lips.



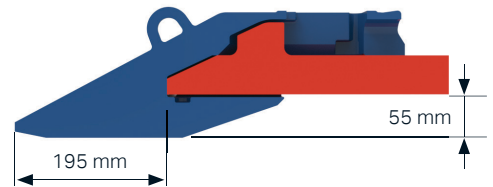
## BLUE POINTER™ 2 – 50MM STANDARD

- Suitable for medium to large-sized loaders operating in normal mining conditions.
- Constructed from highly wear-resistant **Sandvik SS3000 steel alloy**.
- Suits 50mm thick primary lips.



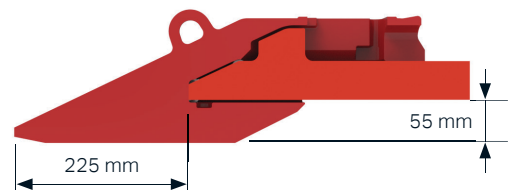
## BLUE POINTER™ 2 – HEAVY DUTY

- Suitable for medium to large-sized loaders operating in aggressive mining conditions.
- Constructed from highly wear-resistant **Sandvik SS3000 steel alloy**.
- More available wear material than 50MM Standard shrouds.
- Suits 50mm thick primary lips.



## BLUE POINTER™ 2 – EXTENDED

- Suitable for medium to large-sized loaders operating in extreme mining conditions.
- Constructed from highly wear-resistant **Sandvik SS5000 steel alloy**.
- More available wear material than Heavy Duty shrouds.
- Suits 50mm thick primary lips.



Type	Model	BP32mm	BP50mm	BPHD	BPE
Sandvik	LH307	•			
	LH410	•	•		
	LH514		•	•	•
	LH517		•	•	•
	LH621		•	•	•
Epiroc	ST3.5	•			
	ST7	•			
	ST1030	•	•		
	ST14		•	•	•
	ST18		•	•	•
Caterpillar	R1300	•			
	R1600	•	•		
	R1700		•	•	•
	R2900		•	•	•
	R3000		•	•	•

# HALF ARROW

The Half Arrow Series is a range of weld-on lip protection systems designed to extend the life of loader buckets by preserving the structure of the primary lip. The range's advanced design allows for good penetration of muck piles and optimization of material flows during dumping. GET in the Half Arrow range are constructed from a Sandvik wear-resistant alloy that delivers a high performance-to-weight ratio.

## CHARACTERISTICS

- Constructed from custom high-performance, wear-resistant **Sandvik SS2000 steel alloy**.
- Dedicated corner edges protect high-wearing zones.
- Self-sharpening profile to maintain mucking performance.
- Optimized for maximum GET wear and reduced waste material at end of life.
- Built-in weld prep areas for easy installation.

## ADVANTAGES

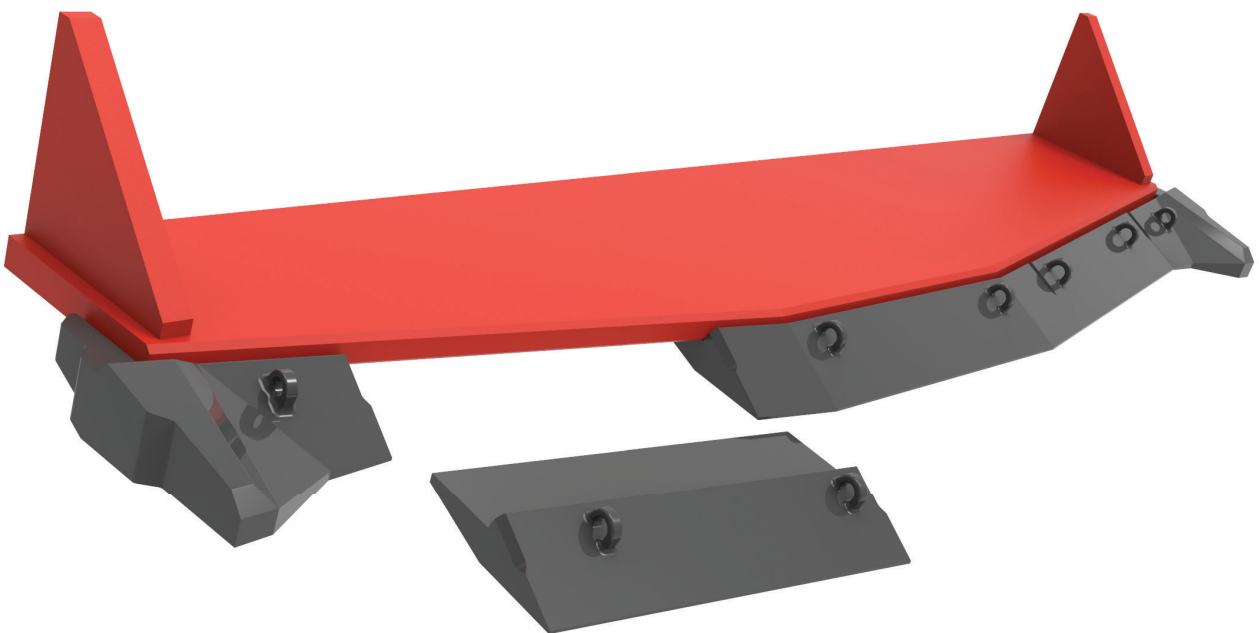
- Compatible with all Sandvik and non-Sandvik loader buckets.
- No structural modifications required to install system.
- Faster GET change-outs than replacing the entire lip.

## BENEFITS

- Extend bucket service life.
- Maintain bucket capacity for longer.
- Reduce the frequency of lip rebuilds.
- Reduce the total cost of ownership of loader and bucket.

## TYPES

- Light Duty
- Heavy Duty



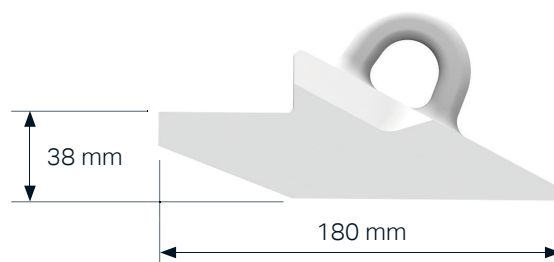


# HALF ARROW

## HALF ARROW – LIGHT DUTY

Suitable for small to medium-sized loaders operating in normal mining conditions.

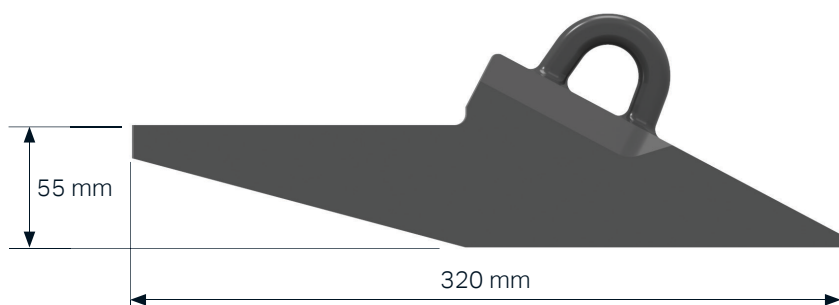
Lip thickness range = 25mm – 38mm.



## HALF ARROW – HEAVY DUTY

Suitable for medium to large-sized loaders operating in normal to aggressive mining conditions.

Lip thickness range = 40mm – 50mm.



## HALF ARROW COMPATIBILITY

Type	Model	HA Light duty	HA Heavy Duty
Sandvik	LH202	•	
	LH203	•	
	LH204	•	
	LH307	•	•
	LH410		•
	LH514		•
	LH517		•
	LH621		•
Epiroc	ST2G	•	
	ST2D	•	
	ST3.5	•	
	ST7	•	•
	ST1030		•
	ST14		•
	ST18		•
Caterpillar	R1300	•	•
	R1600		•
	R1700		•
	R2900		•
	R3000		•

# WELD-ON HEEL SHROUDS

Shark™ heel shrouds protect the external weld seams of the bucket's side walls and floor plates during high-abrasion mining operations, reducing wear. They also provide support to the whole GET package, helping to extend the life of the bucket through wear-package alignment.

## CHARACTERISTICS

- Constructed from custom, high-performance wear-resistant **Sandvik SS2000 steel alloy**.
- Available in different sizes and types to better suit your site-specific application.
- Has cut-out design feature to suit all bucket designs.

## ADVANTAGES

- Compatible with all Sandvik and non-Sandvik loader buckets.
- Long heel shrouds available to eliminate wash-out between shrouds.

## BENEFITS

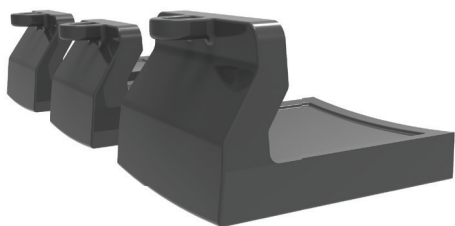
- Extend bucket service life.
- Protect the side wall and floor plate weld seams.
- Reduce the frequency of lip rebuilds by supporting the primary lip through wear-package alignment.
- Reduces the total cost of ownership of your loader and bucket.

## THICKNESS

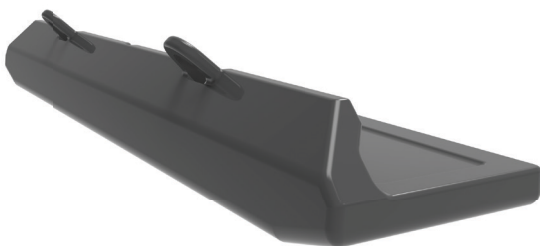
- 40mm
- 50mm

## TYPES

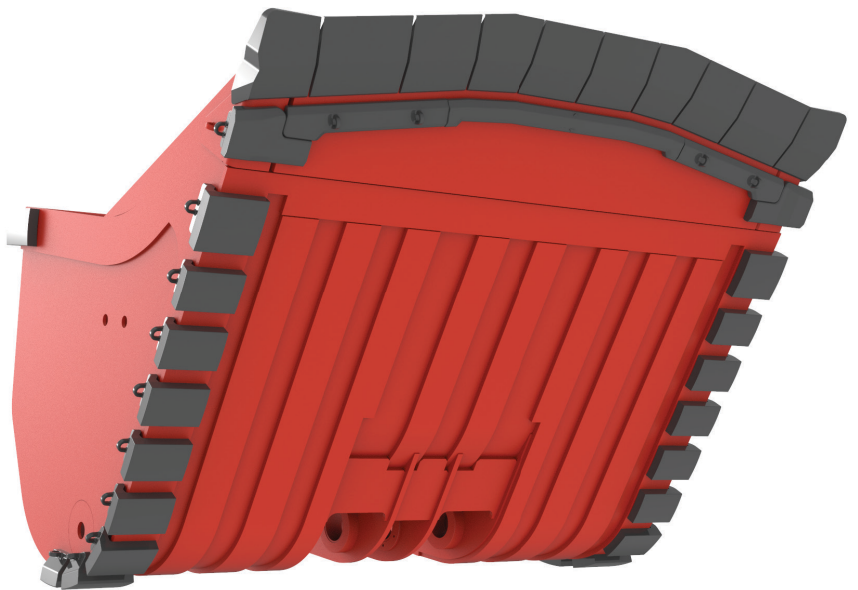
- Single weld-on Heel Shrouds
- Long weld-on Heel Shrouds



Single weld-on Heel Shrouds



Long weld-on Heel Shroud



# MECHANICAL HEEL SHROUDS

Shark™ mechanical heel shrouds (MHS) protect the external weld seams of the bucket's side walls and floor plates during high-abrasion mining operations, reducing wear. They also provide support to whole GET package, helping to extend the life of the bucket through wear-package alignment.

Mechanical heel shrouds improve change-out times by up to 85 percent. No 'hot work' required after initial baseplate installation.

## CHARACTERISTICS

- Constructed from custom, high-performance, wear-resistant **Sandvik SS3000 steel alloy**.
- Has cut-out design feature to suit all bucket designs.
- Parts must be ordered as left hand or right-hand parts.

## ADVANTAGES

- Compatible with all Sandvik and non-Sandvik loader buckets.
- XL (Leading) heel shrouds for higher wearing areas.

## BENEFITS

- Extend bucket service life.
- Can be accessed from the side of the bucket, improving safety.
- Protects the side wall and floor plate weld seams.
- Reduces the frequency of lip rebuilds by supporting the primary lip through wear-package alignment.
- Reduces the total cost of ownership of loader and bucket.

## THICKNESS

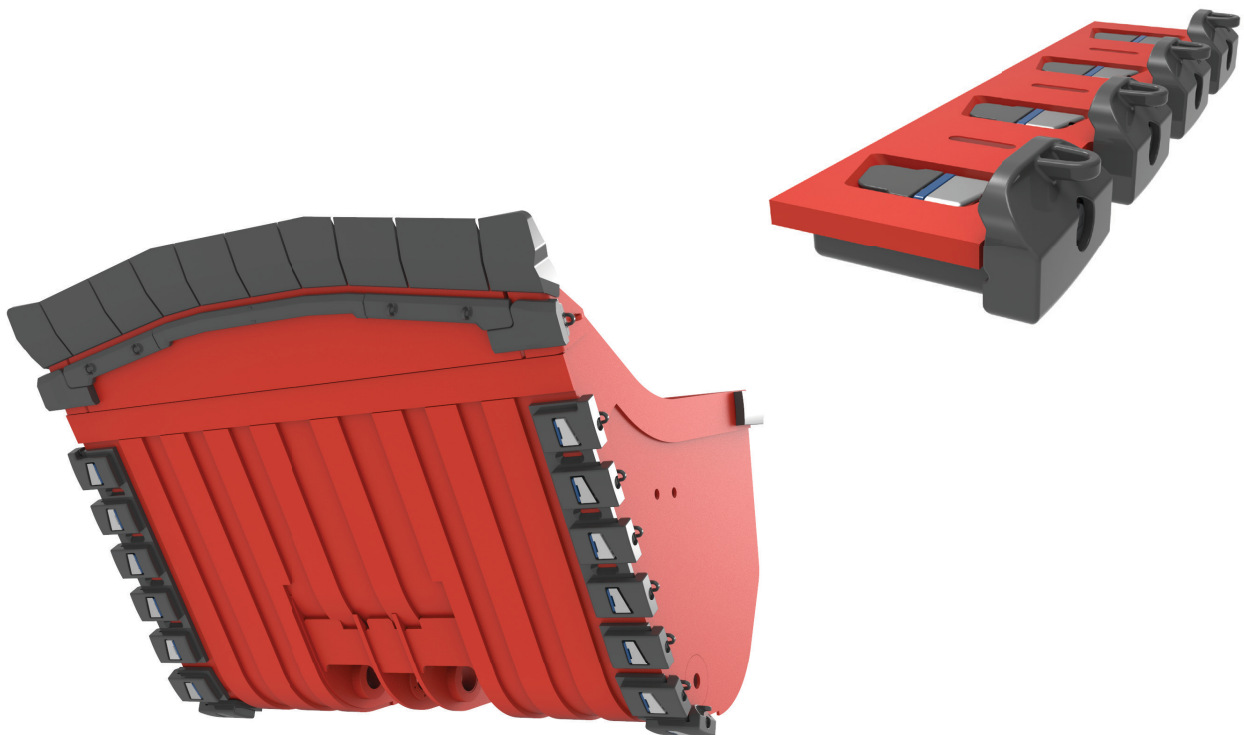
- 55mm

## TYPES

- Standard
- XL

## MAINTENANCE

- Customers required to have capacity to maintain the product after installation.



# PLATE PROFILE BARS

Shark™ Profile Bars protect the rear underside faces of the lip protection system from wear during normal and back blading operations. They also provide support to whole GET package, helping to extend the life of the bucket through wear-package alignment.

## CHARACTERISTICS

- Plate profile bars are constructed from high-performance, wear-resistant steel.
- Available in different thickness sizes to suit different wear package combinations.

## ADVANTAGES

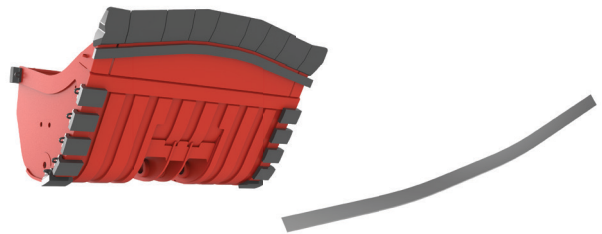
- Compatible with all Sandvik and non-Sandvik loader buckets.

## BENEFITS

- Extend bucket service life.
- Reduce the frequency of lip rebuilds by supporting the primary lip through wear-package alignment.
- Reduce the total cost of ownership of loader and bucket.

## THICKNESS

- 40mm Plate
- 50mm Plate

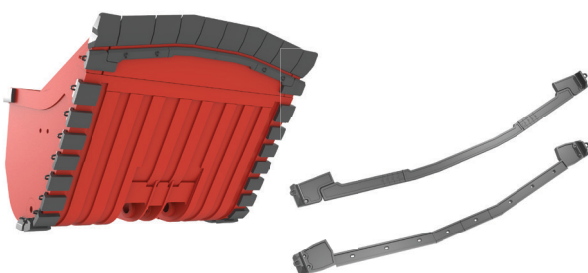


# CAST PROFILE BARS

Shark™ Cast Profile Bars protect the rear underside faces of the lip protection system from wear during normal and back blading operations. They also provide support to whole GET package, helping to extend the life of the bucket through wear-package alignment.

## CHARACTERISTICS

- Constructed from custom, high-performance wear-resistant **Sandvik SS2000/SS2300 steel alloy**.
- Excellent through-hardness capability for lifetime performance.
- Modular design with dedicated corner heel-shroud design to reinforce high-wearing areas.



## ADVANTAGES

- Compatible with all Sandvik and non-Sandvik loader buckets.
- Modular design that can be cut to suit any bucket width.
- Better wearability than plate profile bars..

## BENEFITS

- Extend bucket's service life.
- Reduce the frequency of lip rebuilds by supporting the primary lip through wear-package alignment.
- Reduce the total cost of ownership of loader and bucket.

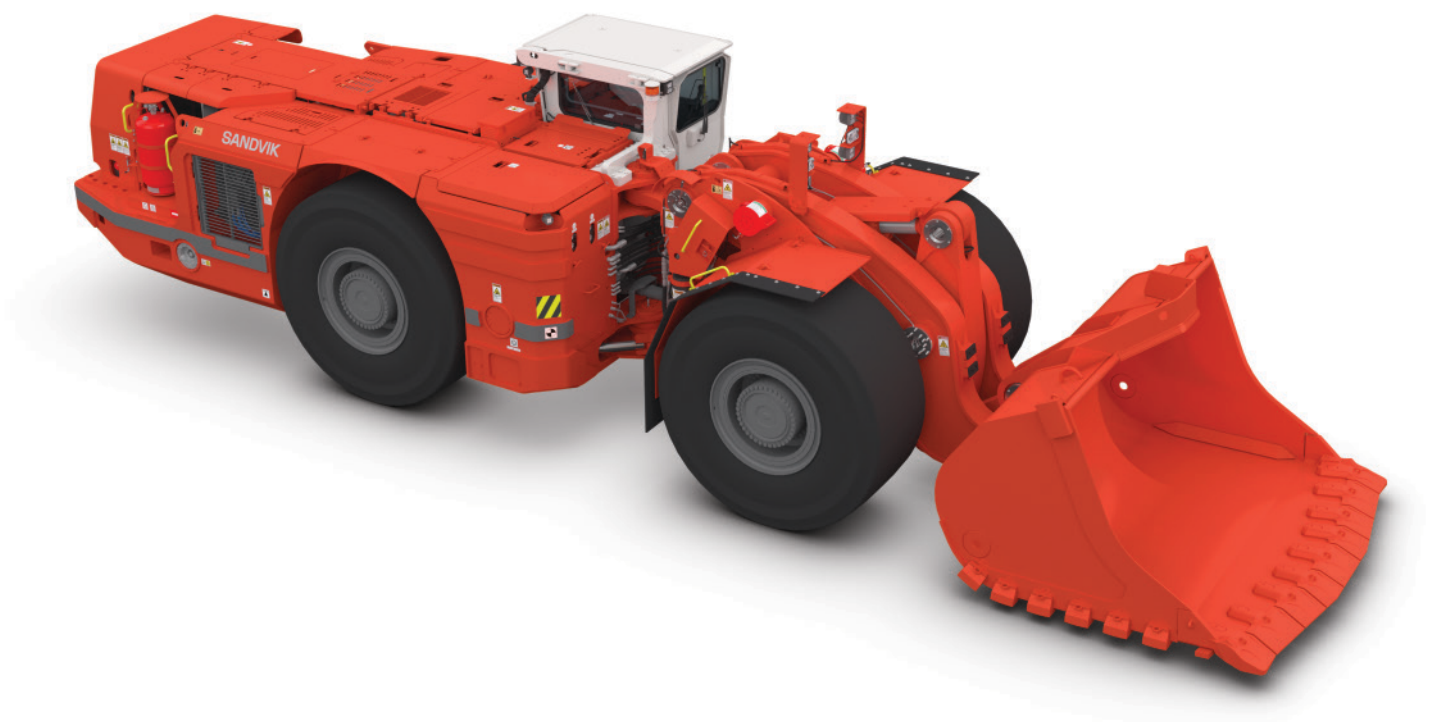
## THICKNESS

- 50mm (SS2000 steel alloy)
- 55mm (SS2300 steel alloy)

# SUMMARY LOADER COMPATIBILITY MATRICES

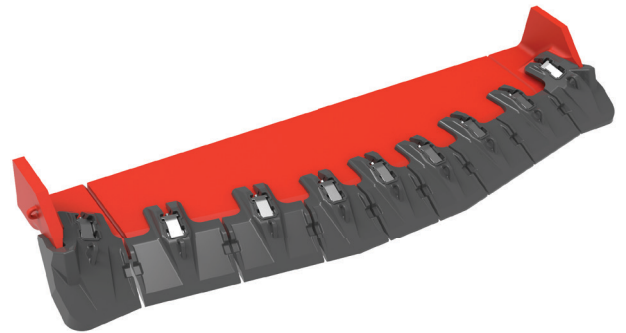
Type	Model	HA LD	HA HD	BP32mm	BP50mm	BPHD	BPE	Mako™
Sandvik	LH202	•						
	LH203	•						
	LH204	•						
	LH307	•	•	•				
	LH410		•	•	•			
	LH514		•		•	•	•	•
	LH517		•		•	•	•	•
	LH621		•		•	•	•	•
Epiroc	ST2G	•						
	ST2D	•						
	ST3.5	•	•	•				
	ST7	•	•	•				
	ST1030		•	•	•			
	ST14		•		•	•	•	•
	ST18		•		•	•	•	•
Caterpillar	R1300	•	•	•				
	R1600		•	•	•			
	R1700		•		•	•	•	•
	R2900		•		•	•	•	•
	R3000		•		•	•	•	•

Further maintenance and operational assessments maybe necessary to define the most suitable system for a customer's specific application.



# 50MM MAKO™ SHROUDS

Sandvik part number	SHARK™ part number	Description
BC00003429	SM50-B	Mako 50mm Weld on Boss
BU00081000	SM50-PAS2	Mako 50mm Pin Assembly
BC00003415	SM50x260-CL	Mako 260mm Left Hand Corner Shroud
BU00024899	SM50x260-CLH	Mako 260mm L/H Half Corner Shroud
BC00003416	SM50x260-CR	Mako 260mm Right Hand Corner Shroud
BU00024898	SM50x260-CRH	Mako 260mm R/H Half Corner Shroud
BC00003414	SM50x286-T	Mako 286mm Transition Shroud
BC00003411	SM50x290-S	Mako 290mm Straight Shroud
BC00003412	SM50x375-S	Mako 375mm Straight Shroud
BC00003413	SM50x415-S	Mako 415mm Straight Shroud
BC00003419	SMC50x285-LE	Mako 50mm Extended L/H Cast Corner
BC00003417	SMC50x285-LS	Mako 50mm L/H Cast Corner Standard
BC00003420	SMC50x285-RE	Mako 50mm Extended R/H Cast Corner
BC00003418	SMC50x285-RS	Mako 50mm R/H Cast Corner Standard



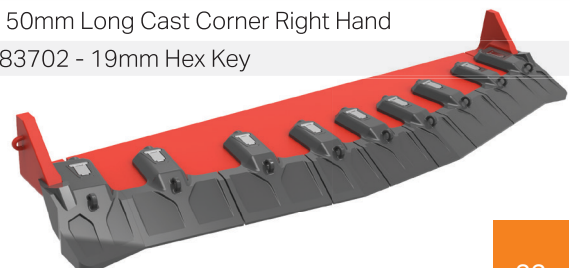
## 32MM BLUE POINTER™ 2 - STANDARD

Sandvik part number	SHARK™ part number	Description
69039979	SBP32-BP2	BP2 32mm Bolt Plug (Bag of 50)
69039977	SBP32-CS2	BP2 32mm Packaged Cap Screws
69039975	SBP32-PAS2	BP2 32mm Pin Assembly
69039976	SBP32-SKS2	BP2 32mm Service Kit
69039978	SBP32-SS2	BP2 32mm Spacer
69039980	SBP32-B2	BP2 32mm Weld on Boss
69039971	SBP32x210-CL2	BP2 32mm Corner Shroud L/H
69039972	SBP32x210-CR2	BP2 32mm Corner Shroud R/H
69042488	SBP32x210-CLH2	BP2 32mm 3/4 Corner Shroud L/H
69042489	SBP32x210-CRH2	BP2 32mm 3/4 Corner Shroud R/H
69039967	SBP32x250-S2	BP2 32mm Straight Shroud 250mm
69039970	SBP32x275-T2	BP2 32mm Transition Shroud 275mm
69039968	SBP32x310-S2	BP2 32mm Straight Shroud 310mm
69039969	SBP32x380-S2	BP2 32mm Straight Shroud 380mm
69039973	SCC32x155-LS	BP2 32mm Cast Corner L/H
69039974	SCC32x155-RS	BP2 32mm Cast Corner R/H
69042890	SBP32-HK5/8	01983605 - 5/8 Hex Key



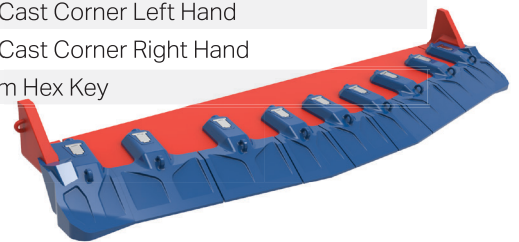
## 50MM BLUE POINTER™ 2 - STANDARD

Sandvik part number	SHARK™ part number	Description
69039959	SBP50-BP2	BP2 50mm Bolt Plug (Bag of 50)
69039957	SBP50-CS2	BP2 50mm Packaged Cap Screw
69039955	SBP50-PAS2	BP2 50mm Pin Assembly
69039956	SBP50-SKS2	BP2 50mm Service Kit
69039958	SBP50-SS2	BP2 50mm Spacer
69039960	SBP50-B2	BP2 50mm Weld On Boss
69039951	SBP50x235-CL2	BP2 50mm Corner Shroud L/H
69039952	SBP50x235-CR2	BP2 50mm Corner Shroud R/H
69039953	SBP50x235-CLH2	BP2 50mm 3/4 Corner Shroud L/H
69039954	SBP50x235-CRH2	BP2 50mm 3/4 Corner Shroud R/H
69039950	SBP50x288-T2	BP2 50mm Transition Shroud 288mm
69039947	SBP50x290-S2	BP2 50mm Straight Shroud 290mm
69039948	SBP50x330-S2	BP2 50mm Straight Shroud 330mm
69039949	SBP50x420-S2	BP2 50mm Straight Shroud 420mm
69037854	SCC50x175-LS	BP2 50mm Cast Corner Left Hand
69037855	SCC50x175-RS	BP2 50mm Cast Corner Right Hand
69037869	SCC50x175-LE	BP2 50mm Long Cast Corner Left Hand
69037870	SCC50x175-RE	BP2 50mm Long Cast Corner Right Hand
69042891	SBP50-HK19mm	01983702 - 19mm Hex Key



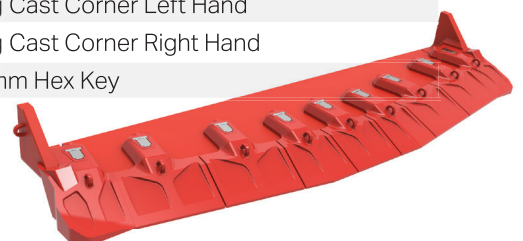
## 50MM BLUE POINTER™ 2 - HEAVY DUTY

Sandvik part number	SHARK™ part number	Description
69039959	SBP50-BP2	BP2 50mm Bolt Plug (Bag of 50)
69039957	SBP50-CS2	BP2 50mm Packaged Cap Screw
69039955	SBP50-PAS2	BP2 50mm Pin Assembly
69039956	SBP50-SKS2	BP2 50mm Service Kit
69039958	SBP50-SS2	BP2 50mm Spacer
69039960	SBP50-B2	BP2 50mm Weld On Boss
69039965	SBP50x235-CLX2	BP2 50mm HD Corner Shroud L/H
69039966	SBP50x235-CRX2	BP2 50mm HD Corner Shroud R/H
69039953	SBP50x235-CLH2	BP2 50mm 3/4 Corner Shroud L/H
69039954	SBP50x235-CRH2	BP2 50mm 3/4 Corner Shroud R/H
69039964	SBP50x288-TX2	BP2 50mm HD Transition Shroud 288mm
69039961	SBP50x290-SX2	BP2 50mm HD Straight Shroud 290mm
69039962	SBP50x330-SX2	BP2 50mm HD Straight Shroud 330mm
69039963	SBP50x420-SX2	BP2 50mm HD Straight Shroud 420mm
69037854	SCC50x175-LS	BP2 50mm Cast Corner Left Hand
69037855	SCC50x175-RS	BP2 50mm Cast Corner Right Hand
69037869	SCC50x175-LE	BP2 50mm Long Cast Corner Left Hand
69037870	SCC50x175-RE	BP2 50mm Long Cast Corner Right Hand
69042891	SBP50-HK19mm	01983702 - 19mm Hex Key



## 50MM BLUE POINTER™ 2 - EXTENDED

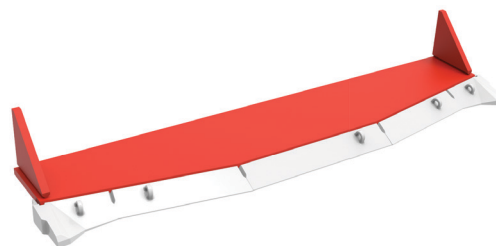
Sandvik part number	SHARK™ part number	Description
69039959	SBP50-BP2	BP2 50mm Bolt Plug (Bag of 50)
69039957	SBP50-CS2	BP2 50mm Packaged Cap Screw
69039955	SBP50-PAS2	BP2 50mm Pin Assembly
69039956	SBP50-SKS2	BP2 50mm Service Kit
69039958	SBP50-SS2	BP2 50mm Spacer
69039960	SBP50-B2	BP2 50mm Weld On Boss
BU00012677	SBP50x235-CLE	BP2 50mm Ext Corner Shroud L/H
BU00010963	SBP50x235-CRE	BP2 50mm Ext Corner Shroud R/H
BU00058793	SBP50x235-CLHE	BP2 50mm Ext 3/4 Corner Shroud L/H
BU00058794	SBP50x235-CRHE	BP2 50mm Ext 3/4 Corner Shroud R/H
BU00011156	SBP50x288-TE	BP2 50mm Ext Transition Shroud 288mm
BU00010922	SBP50x290-SE	BP2 50mm Ext Straight Shroud 290mm
BU00011145	SBP50x330-SE	BP2 50mm Ext Straight Shroud 330mm
BU00011146	SBP50x420-SE	BP2 50mm Ext Straight Shroud 420mm
69037854	SCC50x175-LS	BP2 50mm Cast Corner Left Hand
69037855	SCC50x175-RS	BP2 50mm Cast Corner Right Hand
69037869	SCC50x175-LE	BP2 50mm Long Cast Corner Left Hand
69037870	SCC50x175-RE	BP2 50mm Long Cast Corner Right Hand
69042891	SBP50-HK19mm	01983702 - 19mm Hex Key





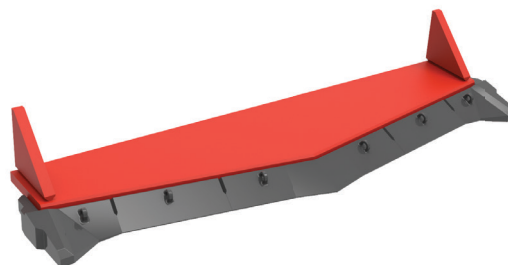
## HALF ARROW - LIGHT DUTY

Sandvik part number	SHARK™ part number	Description
69043429	SHA180x1026-FS	LD Half Arrow - Full Spade Centre Edge
69043431	SHA180x1150-SS	LD Half Arrow - Semi Spade Centre Edge
69037842	SHA180x1060	LD Half Arrow - 1060mm Wear Edge
69040158	SHA180x280-L	LD Half Arrow - L/H Corner Edge
69040159	SHA180x280-R	LD Half Arrow - R/H Corner Edge



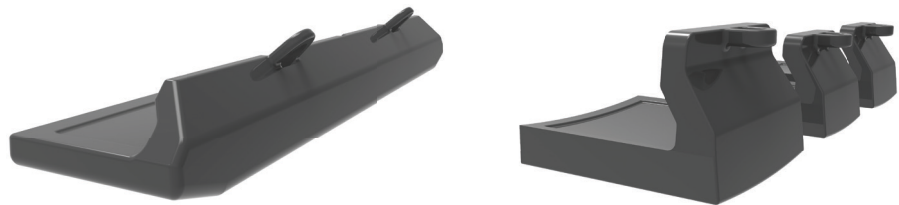
## HALF ARROW - HEAVY DUTY

Sandvik part number	SHARK™ part number	Description
69043428	SHA320x1044-FS	HD Half Arrow - Full Spade Centre Edge
69043430	SHA320x1150-SS	HD Half Arrow - Semi Spade Centre Edge
69037843	SHA320x800	HD Half Arrow - 800mm Wear Edge
69037844	SHA320x1150	HD Half Arrow - 1150mm Wear Edge
69038249	SHA320x350-HL	HD Half Arrow - L/H Corner Edge
69038250	SHA320x350-HR	HD Half Arrow - R/H Corner Edge



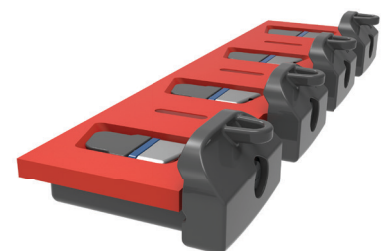
## WELD-ON HEEL SHROUDS

Sandvik part number	SHARK™ part number	Description
69042888	SHS40x1100-LHD	1100mm Wide LHD Heel Shroud
69041891	SHS40x190-LHD	LHD Small Heel Shroud
69044147	SHS50x1100-LHD	50mm LHD Long Heel Shroud
69040888	SHS50x190-LHD	Heel Shroud
69040887	SHS50x250-LHD	LHD Heavy Duty Heel Shroud
BU00071830	SHS40x190-23K	LHD Small Heel Shroud
BU00071831	SHS50x190-23K	Heel Shroud
BU00071832	SHS50x250-23K	LHD Heavy Duty Heel Shroud
BU00071833	SHS40x1100-23K	1100mm Wide LHD Heel Shroud
BU00071834	SHS50x1100-23K	50mm LHD Long Heel Shroud



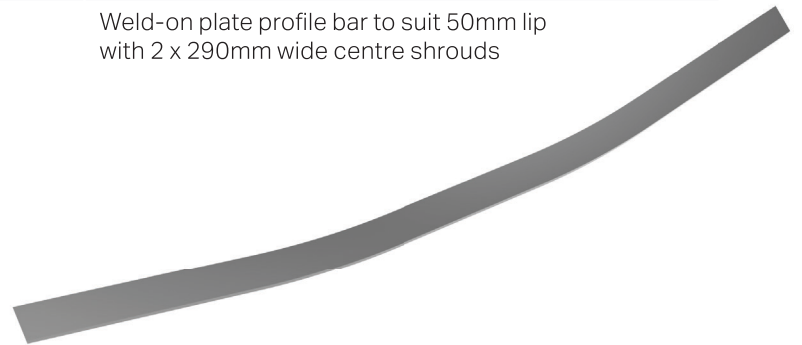
## MECHANICAL HEEL SHROUDS

Sandvik part number	SHARK™ part number	Description
BC00001805	SMHS50-AP4L	Quad Adapter Left Hand
BC00001578	SMHS50-AP4R	Quad Adapter Right Hand
69043688	SMHS50-APL	Mechanical Heel Shroud Adapter Left Hand
69043689	SMHS50-APR	Mechanical Heel Shroud Adapter Right Hand
69043686	SMHS50-L Kit	Mechanical Heel Shroud Nut Kit L/H
69043687	SMHS50-R Kit	Mechanical Heel Shroud Nut Kit R/H
69044154	SMHS50x200-L	Heel Shroud Left Hand
69044155	SMHS50x200-R	Heel Shroud Right Hand
69044156	SMHS50x200-XLL	LHS Extra Large Leading Heel Shroud
69044157	SMHS50x200-XLR	RHS Extra Large Leading Heel Shroud



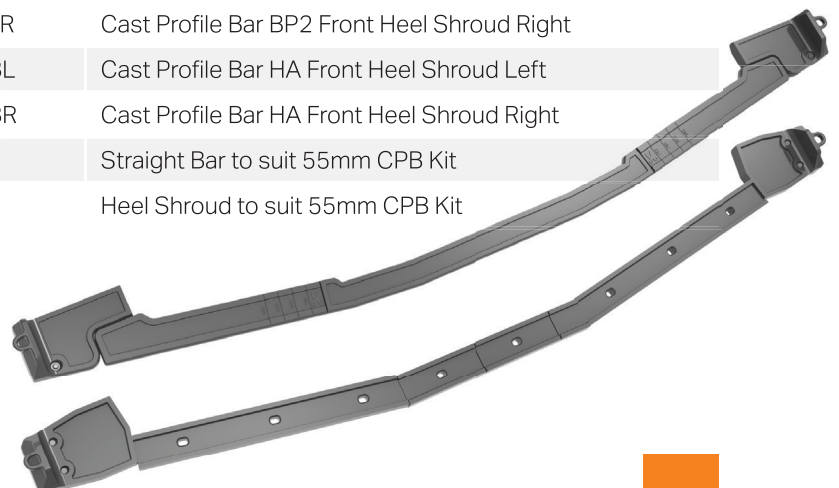
## PLATE PROFILE BAR

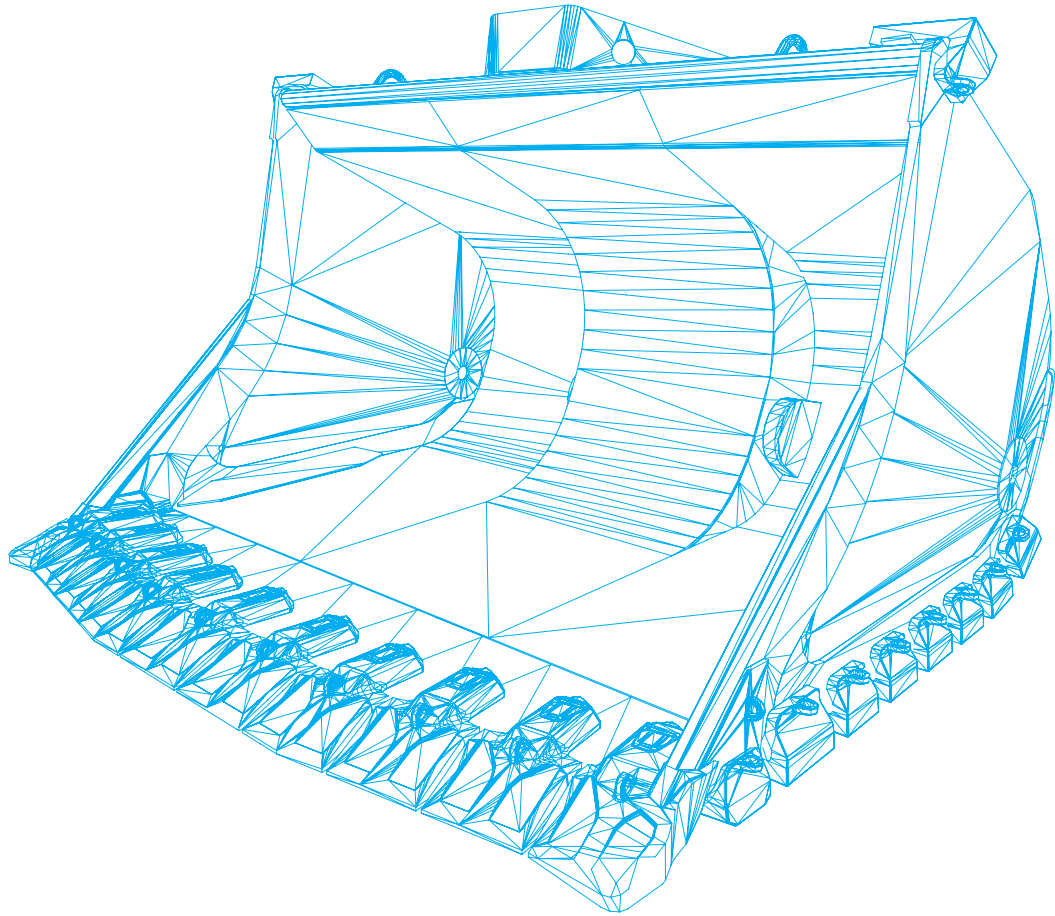
Sandvik part number	SHARK™ part number	Description
69037873	SPB1x290	Weld-on plate profile bar to suit 40mm lip with 1 x 290mm wide centre shroud
69037874	SPB1x420	Weld-on plate profile bar to suit 40mm lip with 1 x 420mm wide centre shroud
69037875	SPB2x290	Weld-on plate profile bar to suit 40mm lip with 2 x 290mm wide centre shrouds
69037876	SPB2x330	Weld-on plate profile bar to suit 40mm lip with 2 x 330mm wide centre shrouds
69042872	SPB1-C4800	Weld-on plate profile bar to suit 50mm lip with 1 x 290mm wide centre shroud
69042873	SPB2-C4800	Weld-on plate profile bar to suit 50mm lip with 2 x 290mm wide centre shrouds



## CAST PROFILE BAR

Sandvik part number	SHARK™ part number	Description
69043991	SCPB50-SLL	Cast Profile Bar Straight Long Left
69043992	SCPB50-SLR	Cast Profile Bar Straight Long Right
69043993	SCPB50-SSL	Cast Profile Bar Straight Short Left
69043994	SCPB50-SSR	Cast Profile Bar Straight Short Right
69043995	SCPB50x290	Cast Profile Bar Centre Casting 290mm
69043996	SCPB50x460	Cast Profile Bar Centre Casting 460mm
69043997	SCPB50x600	Cast Profile Bar Centre Casting 600mm
69043998	SCPB50x680	Cast Profile Bar Centre Casting 680mm
69043999	SHSBP50x200-CBL	Cast Profile Bar BP2 Front Heel Shroud Left
69044000	SHSBP50x200-CBR	Cast Profile Bar BP2 Front Heel Shroud Right
69044001	SHSHA50x200-CBL	Cast Profile Bar HA Front Heel Shroud Left
69044002	SHSHA50x200-CBR	Cast Profile Bar HA Front Heel Shroud Right
BU00067342	SCB55x300-23K	Straight Bar to suit 55mm CPB Kit
BU00067343	SCB55x232-23K	Heel Shroud to suit 55mm CPB Kit





# SHARK™ GROUND ENGAGING TOOLS GET MORE FROM YOUR BUCKET

For more information to visit website:  
[www.rocktechnology.sandvik/en/parts-and-services/ground-engaging-tools-and-buckets/ground-engaging-tools/](http://www.rocktechnology.sandvik/en/parts-and-services/ground-engaging-tools-and-buckets/ground-engaging-tools/)

